



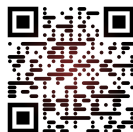
SCALES & ARPEGGIOS FOR
EUPHONIUM (BASS CLEF)

REHEARSAL EDITION

ENGRAVED BY R. L. ROY

Contents

| | |
|-----------------------------------|-----|
| Altered Scales | 1 |
| Arpeggios | 2 |
| Bebop Scales | 17 |
| Blues Scales | 21 |
| Chromatic Scales | 23 |
| Dorian Scales | 27 |
| Harmonic Minor Scales | 28 |
| Jazz Minor Scales | 43 |
| Locrian Scales | 52 |
| Lydian Augmented Scales | 53 |
| Lydian Dominant Scales | 54 |
| Lydian Scales | 55 |
| Major Scales | 56 |
| Melodic Minor Scales | 70 |
| Mixolydian Scales | 84 |
| Modal Scales | 85 |
| Natural Minor Scales | 102 |
| Octatonic Scales | 115 |
| Pentatonic Scales | 120 |
| Phrygian Scales | 124 |
| Whole Tone Scales | 125 |
| Practice Log | 128 |
| Manuscript Paper | 129 |



Open Access

Euphonium
Altered Scales (Super Locrian)
1 Octave

Euphonium
Alterierten Tonleitern
1 Oktave

Euphonium
Gammes Altérées
1 Octave

C Altered F Altered

This block contains two musical staves. The first staff is for the C Altered scale, starting on middle C (C4) and moving up an octave. The second staff is for the F Altered scale, starting on F3 and moving up an octave. Both scales are written in bass clef with a 2/4 time signature. The C Altered scale consists of the notes C, Bb, Ab, Gb, F, Eb, D, and C. The F Altered scale consists of the notes F, Eb, D, C, Bb, Ab, Gb, and F.

A# Altered D# Altered

This block contains two musical staves. The first staff is for the A# Altered scale, starting on A#3 and moving up an octave. The second staff is for the D# Altered scale, starting on D#3 and moving up an octave. Both scales are written in bass clef with a 2/4 time signature. The A# Altered scale consists of the notes A#, G, F, E, D, C, B, and A#. The D# Altered scale consists of the notes D#, C, B, A, G, F, E, and D#.

G# Altered C# Altered

This block contains two musical staves. The first staff is for the G# Altered scale, starting on G#3 and moving up an octave. The second staff is for the C# Altered scale, starting on C#3 and moving up an octave. Both scales are written in bass clef with a 2/4 time signature. The G# Altered scale consists of the notes G#, F, E, D, C, B, A, and G#. The C# Altered scale consists of the notes C#, B, A, G, F, E, D, and C#.

F# Altered B Altered

This block contains two musical staves. The first staff is for the F# Altered scale, starting on F#3 and moving up an octave. The second staff is for the B Altered scale, starting on B3 and moving up an octave. Both scales are written in bass clef with a 2/4 time signature. The F# Altered scale consists of the notes F#, E, D, C, B, A, G, and F#. The B Altered scale consists of the notes B, Ab, G, F, E, D, C, and B.

E Altered A Altered

This block contains two musical staves. The first staff is for the E Altered scale, starting on E3 and moving up an octave. The second staff is for the A Altered scale, starting on A3 and moving up an octave. Both scales are written in bass clef with a 2/4 time signature. The E Altered scale consists of the notes E, D, C, B, Ab, G, F, and E. The A Altered scale consists of the notes A, G, F, E, D, C, B, and A.

D Altered G Altered

This block contains two musical staves. The first staff is for the D Altered scale, starting on D3 and moving up an octave. The second staff is for the G Altered scale, starting on G3 and moving up an octave. Both scales are written in bass clef with a 2/4 time signature. The D Altered scale consists of the notes D, C, B, Ab, G, F, E, and D. The G Altered scale consists of the notes G, F, E, D, C, B, Ab, and G.

Euphonium
Arpeggios
1 Octave

Euphonium
Arpeggios
1 Oktave

Euphonium
Arpèges
1 Octave

Major/Dur/Majeur

Major arpeggios for Euphonium, 1 Octave. The notation is presented in three rows of four measures each. Each measure contains an arpeggiated chord. The chords and their corresponding key signatures are: C (C major), F (F major), B \flat (B \flat major), E \flat (E \flat major), A \flat (A \flat major), D \flat (D \flat major), G \flat (G \flat major), B (B major), E (E major), A (A major), D (D major), and G (G major). The key signature changes are indicated by the number of sharps or flats at the beginning of each measure.

Minor/Moll/Mineur

Minor arpeggios for Euphonium, 1 Octave. The notation is presented in three rows of four measures each. Each measure contains an arpeggiated chord. The chords and their corresponding key signatures are: A (A minor), D (D minor), G (G minor), C (C minor), F (F minor), B \flat (B \flat minor), E \flat (E \flat minor), A \flat (A \flat minor), C \sharp (C \sharp minor), F \sharp (F \sharp minor), B (B minor), and E (E minor). The key signature changes are indicated by the number of sharps or flats at the beginning of each measure.

Euphonium
Arpeggios
1 Octave

Euphonium
Arpeggios
1 Oktave

Euphonium
Arpèges
1 Octave

Augmented/Übermäßige/Augmenté

Musical notation for Augmented/Übermäßige/Augmenté arpeggios. The notation is presented in three rows of four measures each, all in bass clef. Each measure contains an arpeggiated chord. The chords and their corresponding key signatures are: Row 1: C (C major), F (F major), Bb (Bb major), Eb (Eb major); Row 2: Ab (Ab major), Db (Db major), Gb (Gb major), B (B major); Row 3: E (E major), A (A major), D (D major), G (G major). Each measure is separated by a double bar line.

Diminished/Verminderte/Diminué

Musical notation for Diminished/Verminderte/Diminué arpeggios. The notation is presented in three rows of four measures each, all in bass clef. Each measure contains an arpeggiated chord. The chords and their corresponding key signatures are: Row 1: A (A minor), D (D minor), G (G minor), C (C minor); Row 2: F (F minor), Bb (Bb minor), Eb (Eb minor), Ab (Ab minor); Row 3: C# (C# minor), F# (F# minor), B (B minor), E (E minor). Each measure is separated by a double bar line.

Euphonium
Arpeggios
1 Octave

Euphonium
Arpeggios
1 Oktave

Euphonium
Arpèges
1 Octave

Major Sevenths/Dur-Septimen/Septièmes Majeures

Major Sevenths arpeggios in bass clef, showing 12 major seventh chords: C, F, B \flat , E \flat , A \flat , D \flat , G \flat , B, E, A, D, G.

Dominant Sevenths/Dominant-Septimen/Septièmes Dominantes

Dominant Sevenths arpeggios in bass clef, showing 12 dominant seventh chords: C, F, B \flat , E \flat , A \flat , D \flat , G \flat , B, E, A, D, G.

Euphonium
Arpeggios
1 Octave

Euphonium
Arpeggios
1 Oktave

Euphonium
Arpèges
1 Octave

Minor Sevenths/Moll-Septimen/Septièmes Mineures

Musical notation for Minor Sevenths arpeggios in bass clef. The notation is organized into four rows, each containing three measures. The notes are: Row 1: A, D, G; Row 2: C, F, Bb; Row 3: Eb, Ab, C#; Row 4: F#, B, E. Each measure shows the arpeggio pattern (root, 2nd, 3rd, 4th, 5th, 6th, 7th) with a whole note chord symbol above it. The key signature changes from one flat to two flats, then to three flats, and finally to two sharps.

Dominant Sevenths b5/Dominant-Septimen b5/Septièmes Dominantes b5

Musical notation for Dominant Sevenths b5 arpeggios in bass clef. The notation is organized into four rows, each containing three measures. The notes are: Row 1: C, F, Bb; Row 2: Eb, Ab, Db; Row 3: Gb, B, E; Row 4: A, D, G. Each measure shows the arpeggio pattern (root, 2nd, 3rd, 4th, 5th, 6th, 7th) with a whole note chord symbol above it. The key signature changes from one flat to two flats, then to three flats, and finally to two sharps.

Euphonium
Arpeggios
1 Octave

Euphonium
Arpeggios
1 Oktave

Euphonium
Arpèges
1 Octave

Half-Diminished Seventh/Halben-Verminderte Septimen/Septièmes Demi-Diminués

Four staves of musical notation for Half-Diminished Seventh chords. Each staff contains three measures, one for each chord: A, D, G, C, F, Bb, D#, G#, C#, F#, B, E. The notation is in bass clef and includes a key signature change for the last two chords in each staff.

Diminished Seventh/Verminderte Septimen/Septièmes Diminués

Four staves of musical notation for Diminished Seventh chords. Each staff contains three measures, one for each chord: A, D, G, C, F, Bb, D#, G#, C#, F#, B, E. The notation is in bass clef and includes a key signature change for the last two chords in each staff.

Euphonium
Arpeggios
1 Octave

Euphonium
Arpeggios
1 Oktave

Euphonium
Arpèges
1 Octave

Major Ninths/Dur-Nonen/Neuvièmes Majeures

Major Ninths arpeggios in bass clef, showing 12 chromatic major ninth intervals. The intervals are: C, F, B \flat , E \flat , A \flat , D \flat , G \flat , B, E, A, D, G.

Minor Ninths/Moll-Nonen/Neuvièmes Mineures

Minor Ninths arpeggios in bass clef, showing 12 chromatic minor ninth intervals. The intervals are: A, D, G, C, F, B \flat , E \flat , A \flat , C \sharp , F \sharp , B, E.

Euphonium
Arpeggios
1 Octave

Euphonium
Arpeggios
1 Oktave

Euphonium
Arpèges
1 Octave

Dominant Ninths/Dominant-Nonen/Neuvièmes Dominantes

C F B \flat

E \flat A \flat D \flat

G \flat B E

A D G

Dominant Minor Ninths/Dominant-Moll-Nonen/Neuvièmes Dominantes Mineures

C F B \flat

E \flat A \flat D \flat

G \flat B E

A D G

Euphonium
Arpeggios
2 Octaves

Euphonium
Arpeggios
2 Oktaven

Euphonium
Arpèges
2 Octaves

Major/Dur/Majeur

Major arpeggios for Euphonium, 2 octaves. The piece is divided into 12 measures, each representing a different major chord. The chords are: C, F, Bb, Eb, Ab, Db, Gb, B, E, A, D, and G. Each measure contains an ascending and a descending arpeggio pattern, with a final note and a fermata.

Minor/Moll/Mineur

Minor arpeggios for Euphonium, 2 octaves. The piece is divided into 12 measures, each representing a different minor chord. The chords are: A, D, G, C, F, Bb, Eb, Ab, C#, F#, B, and E. Each measure contains an ascending and a descending arpeggio pattern, with a final note and a fermata.

Euphonium
Arpeggios
2 Octaves

Euphonium
Arpeggios
2 Oktaven

Euphonium
Arpèges
2 Octaves

Augmented/Übermäßige/Augmenté

Musical notation for the Augmented section, consisting of four staves of bass clef music. Each staff contains two measures of music, with a key signature change indicated by a sharp sign above the staff. The key signatures are: C, F, Bb, Eb, Ab, Db, Gb, B, E, A, D, G.

Diminished/Verminderte/Diminué

Musical notation for the Diminished section, consisting of four staves of bass clef music. Each staff contains two measures of music, with a key signature change indicated by a sharp sign above the staff. The key signatures are: A, D, G, C, F, Bb, Eb, Ab, C#, F#, B, E.

Euphonium
Arpeggios
2 Octaves

Euphonium
Arpeggios
2 Oktaven

Euphonium
Arpegges
2 Octaves

Major Sevenths/Dur-Septimen/Septièmes Majeures

C F

Two musical staves in bass clef. The first staff is for C major seventh, showing an ascending eighth-note arpeggio (C-E-G-Bb) and a descending eighth-note arpeggio (Bb-G-E-C). The second staff is for F major seventh, showing an ascending eighth-note arpeggio (F-A-C-Eb) and a descending eighth-note arpeggio (Eb-C-A-F).

Bb Eb

Two musical staves in bass clef. The first staff is for Bb major seventh, showing an ascending eighth-note arpeggio (Bb-D-F-A) and a descending eighth-note arpeggio (A-F-D-Bb). The second staff is for Eb major seventh, showing an ascending eighth-note arpeggio (Eb-G-Bb-D) and a descending eighth-note arpeggio (D-Bb-G-Eb).

Ab Db

Two musical staves in bass clef. The first staff is for Ab major seventh, showing an ascending eighth-note arpeggio (Ab-Bb-D-F) and a descending eighth-note arpeggio (F-D-Bb-Ab). The second staff is for Db major seventh, showing an ascending eighth-note arpeggio (Db-Eb-G-B) and a descending eighth-note arpeggio (B-G-Eb-Db).

Gb B

Two musical staves in bass clef. The first staff is for Gb major seventh, showing an ascending eighth-note arpeggio (Gb-Ab-C-E) and a descending eighth-note arpeggio (E-C-Ab-Gb). The second staff is for B major seventh, showing an ascending eighth-note arpeggio (B-D-F-A) and a descending eighth-note arpeggio (A-F-D-B).

E A

Two musical staves in bass clef. The first staff is for E major seventh, showing an ascending eighth-note arpeggio (E-G-B-D) and a descending eighth-note arpeggio (D-B-G-E). The second staff is for A major seventh, showing an ascending eighth-note arpeggio (A-C-E-G) and a descending eighth-note arpeggio (G-E-C-A).

D G

Two musical staves in bass clef. The first staff is for D major seventh, showing an ascending eighth-note arpeggio (D-F-A-C) and a descending eighth-note arpeggio (C-A-F-D). The second staff is for G major seventh, showing an ascending eighth-note arpeggio (G-B-D-F) and a descending eighth-note arpeggio (F-D-B-G).

Euphonium
Arpeggios
2 Octaves

Euphonium
Arpeggios
2 Oktaven

Euphonium
Arpèges
2 Octaves

Minor Sevenths/Moll-Septimen/Septièmes Mineures

A D

Two musical staves in bass clef. The first staff is for the key of A major, starting with a treble clef and a sharp sign. The second staff is for the key of D major, starting with a treble clef and two sharp signs. Each staff contains two measures of eighth-note arpeggios, with a whole rest in the second measure of each pair.

G C

Two musical staves in bass clef. The first staff is for the key of G major, starting with a treble clef and one sharp sign. The second staff is for the key of C major, starting with a treble clef and no sharps or flats. Each staff contains two measures of eighth-note arpeggios, with a whole rest in the second measure of each pair.

F Bb

Two musical staves in bass clef. The first staff is for the key of F major, starting with a treble clef and one flat sign. The second staff is for the key of Bb major, starting with a treble clef and two flat signs. Each staff contains two measures of eighth-note arpeggios, with a whole rest in the second measure of each pair.

Eb Ab

Two musical staves in bass clef. The first staff is for the key of Eb major, starting with a treble clef and three flat signs. The second staff is for the key of Ab major, starting with a treble clef and four flat signs. Each staff contains two measures of eighth-note arpeggios, with a whole rest in the second measure of each pair.

C# F#

Two musical staves in bass clef. The first staff is for the key of C# major, starting with a treble clef and four sharp signs. The second staff is for the key of F# major, starting with a treble clef and one sharp sign. Each staff contains two measures of eighth-note arpeggios, with a whole rest in the second measure of each pair.

B E

Two musical staves in bass clef. The first staff is for the key of B major, starting with a treble clef and two sharp signs. The second staff is for the key of E major, starting with a treble clef and three sharp signs. Each staff contains two measures of eighth-note arpeggios, with a whole rest in the second measure of each pair.

Euphonium
Arpeggios
2 Octaves

Euphonium
Arpeggios
2 Oktaven

Euphonium
Arpegges
2 Octaves

Dominant Sevenths $b5$ /Dominant-Septimen $b5$ /Septièmes Dominantes $b5$

The image displays a musical score for Euphonium, consisting of six staves of arpeggiated chords. Each staff begins with a chord symbol above the first measure, followed by two measures of arpeggiated notes. The chords and their corresponding key signatures are: C (one flat), F (two flats), B \flat (three flats), E \flat (three flats), A \flat (four flats), D \flat (four flats), G \flat (five flats), B (two sharps), E (three sharps), A (three sharps), D (two sharps), and G (one sharp). The notation uses a bass clef and includes various accidentals (flats, sharps, double flats) to indicate the specific notes of each chord. The arpeggios are played in a consistent rhythmic pattern across all staves.

Euphonium
Arpeggios
2 Octaves

Euphonium
Arpeggios
2 Oktaven

Euphonium
Arpèges
2 Octaves

Half-Diminished Sevenths/Halben-Verminderte Septimen/Septièmes Demi-Diminués

A D

G C

F Bb

D# G#

C# F#

B E

Euphonium
Arpeggios
2 Octaves

Euphonium
Arpeggios
2 Oktaven

Euphonium
Arpèges
2 Octaves

Diminished Sevenths/Verminderte Septimen/Septièmes Diminués

A D

Two musical staves in bass clef. The first staff is for chord A (A-flat major) and the second for chord D (D-flat major). Each chord is shown as a diminished seventh arpeggio with a descending eighth-note pattern. The first measure of each staff contains the arpeggio, and the second measure contains a whole note with a fermata.

G C

Two musical staves in bass clef. The first staff is for chord G (G-flat major) and the second for chord C (C-flat major). Each chord is shown as a diminished seventh arpeggio with a descending eighth-note pattern. The first measure of each staff contains the arpeggio, and the second measure contains a whole note with a fermata.

F Bb

Two musical staves in bass clef. The first staff is for chord F (F-flat major) and the second for chord Bb (B-flat major). Each chord is shown as a diminished seventh arpeggio with a descending eighth-note pattern. The first measure of each staff contains the arpeggio, and the second measure contains a whole note with a fermata.

D# G#

Two musical staves in bass clef. The first staff is for chord D# (D major) and the second for chord G# (G major). Each chord is shown as a diminished seventh arpeggio with a descending eighth-note pattern. The first measure of each staff contains the arpeggio, and the second measure contains a whole note with a fermata.

C# F#

Two musical staves in bass clef. The first staff is for chord C# (C major) and the second for chord F# (F major). Each chord is shown as a diminished seventh arpeggio with a descending eighth-note pattern. The first measure of each staff contains the arpeggio, and the second measure contains a whole note with a fermata.

B E

Two musical staves in bass clef. The first staff is for chord B (B-flat major) and the second for chord E (E-flat major). Each chord is shown as a diminished seventh arpeggio with a descending eighth-note pattern. The first measure of each staff contains the arpeggio, and the second measure contains a whole note with a fermata.

Euphonium
Bebop Scales
1 Octave

C Major



Euphonium
Bebop-Tonleitern
1 Oktave

F Major



Euphonium
Gammes Bebop
1 Octave

Bb Major



Eb Major



Ab Major



Db Major



Gb Major



B Major



E Major



A Major



D Major



G Major



Euphonium
Bebop Scales
1 Octave

Euphonium
Bebop-Tonleitern
1 Oktave

Euphonium
Gammes Bebop
1 Octave

A Minor D Minor

The first line of music shows two bebop scales in bass clef. The first scale is A Minor, starting on A2 and ending on A3. The second scale is D Minor, starting on D2 and ending on D3. Both scales are written in a single line with a double bar line separating them.

G Minor C Minor

The second line of music shows two bebop scales in bass clef. The first scale is G Minor, starting on G2 and ending on G3. The second scale is C Minor, starting on C2 and ending on C3. Both scales are written in a single line with a double bar line separating them.

F Minor Bb Minor

The third line of music shows two bebop scales in bass clef. The first scale is F Minor, starting on F2 and ending on F3. The second scale is Bb Minor, starting on Bb2 and ending on Bb3. Both scales are written in a single line with a double bar line separating them.

Eb Minor Ab Minor

The fourth line of music shows two bebop scales in bass clef. The first scale is Eb Minor, starting on Eb2 and ending on Eb3. The second scale is Ab Minor, starting on Ab2 and ending on Ab3. Both scales are written in a single line with a double bar line separating them.

C# Minor F# Minor

The fifth line of music shows two bebop scales in bass clef. The first scale is C# Minor, starting on C#2 and ending on C#3. The second scale is F# Minor, starting on F#2 and ending on F#3. Both scales are written in a single line with a double bar line separating them.

B Minor E Minor

The sixth line of music shows two bebop scales in bass clef. The first scale is B Minor, starting on B2 and ending on B3. The second scale is E Minor, starting on E2 and ending on E3. Both scales are written in a single line with a double bar line separating them.

Euphonium
Bebop Scales
1 Octave

Euphonium
Bebop-Tonleitern
1 Oktave

Euphonium
Gammes Bebop
1 Octave

D Dorian

G Dorian



C Dorian

F Dorian



Bb Dorian

Eb Dorian



Ab Dorian

C# Dorian



F# Dorian

B Dorian



E Dorian

A Dorian



Euphonium
Bebop Scales
1 Octave

Euphonium
Bebop-Tonleitern
1 Oktave

Euphonium
Gammes Bebop
1 Octave

C Dominant

F Dominant



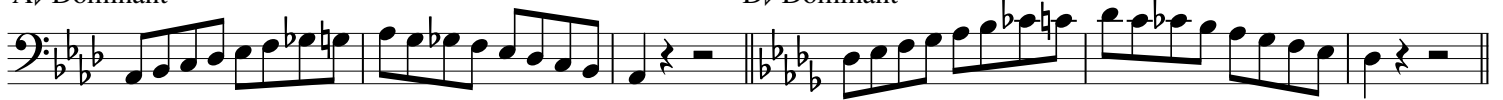
Bb Dominant

Eb Dominant



Ab Dominant

Db Dominant



Gb Dominant

B Dominant



E Dominant

A Dominant



D Dominant

G Dominant



Euphonium
Blues Scales
1 Octave

Euphonium
Bluestonleitern
1 Oktave

Euphonium
Gammes Blues
1 Octave

A Minor Blues

D Minor Blues



G Minor Blues

C Minor Blues



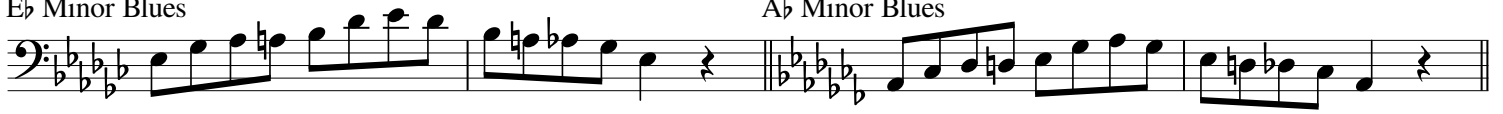
F Minor Blues

Bb Minor Blues



Eb Minor Blues

Ab Minor Blues



C# Minor Blues

F# Minor Blues



B Minor Blues

E Minor Blues



Euphonium
Blues Scales
1 Octave

Euphonium
Bluestonleitern
1 Oktave

Euphonium
Gammes Blues
1 Octave

C Major Blues

F Major Blues



Bb Major Blues

Eb Major Blues



Ab Major Blues

Db Major Blues



Gb Major Blues

B Major Blues



E Major Blues

A Major Blues



D Major Blues

G Major Blues



Euphonium
Chromatic Scales
2 Octaves

Euphonium
Chromatischen Tonleitern
2 Oktaven

Euphonium
Gammes Chromatiques
2 Octaves

C Chromatic

Two staves of musical notation for the C Chromatic scale. The first staff shows the scale ascending from C2 to C4, and the second staff shows it descending from C4 to C2. The notes are: C, C#, D, D#, E, E#, F, F#, G, G#, A, A#, B, B#, C.

C# Chromatic

Two staves of musical notation for the C# Chromatic scale. The first staff shows the scale ascending from C#2 to C#4, and the second staff shows it descending from C#4 to C#2. The notes are: C#, D, D#, E, E#, F, F#, G, G#, A, A#, B, B#, C#.

D Chromatic

Two staves of musical notation for the D Chromatic scale. The first staff shows the scale ascending from D2 to D4, and the second staff shows it descending from D4 to D2. The notes are: D, D#, E, E#, F, F#, G, G#, A, A#, B, B#, C, C#.

Eb Chromatic

Two staves of musical notation for the Eb Chromatic scale. The first staff shows the scale ascending from Eb2 to Eb4, and the second staff shows it descending from Eb4 to Eb2. The notes are: Eb, E, E#, F, F#, G, G#, A, A#, B, B#, C, C#.

Euphonium
Chromatic Scales
2 Octaves

Euphonium
Chromatischen Tonleitern
2 Oktaven

Euphonium
Gammes Chromatiques
2 Octaves

E Chromatic

Two staves of musical notation for the E Chromatic scale. The first staff shows the ascending scale from E2 to E4, and the second staff shows the descending scale from E4 to E2. The notes are: E, F, F#, G, G#, A, Bb, B, C, C#, D, Eb, D#, E.

F Chromatic

Two staves of musical notation for the F Chromatic scale. The first staff shows the ascending scale from F2 to F4, and the second staff shows the descending scale from F4 to F2. The notes are: F, F#, G, G#, A, Bb, B, C, C#, D, Eb, D#, E, F.

F# Chromatic

Two staves of musical notation for the F# Chromatic scale. The first staff shows the ascending scale from F#2 to F#4, and the second staff shows the descending scale from F#4 to F#2. The notes are: F#, G, G#, A, Bb, B, C, C#, D, Eb, D#, E, F.

G Chromatic

Two staves of musical notation for the G Chromatic scale. The first staff shows the ascending scale from G2 to G4, and the second staff shows the descending scale from G4 to G2. The notes are: G, G#, A, Bb, B, C, C#, D, Eb, D#, E, F.

Euphonium
Chromatic Scales
2 Octaves

Euphonium
Chromatischen Tonleitern
2 Oktaven

Euphonium
Gammes Chromatiques
2 Octaves

A \flat Chromatic

Two staves of musical notation for the A \flat Chromatic scale. The first staff shows the ascending scale from A \flat to A \flat two octaves higher. The second staff shows the descending scale from A \flat two octaves higher down to A \flat .

A Chromatic

Two staves of musical notation for the A Chromatic scale. The first staff shows the ascending scale from A to A two octaves higher. The second staff shows the descending scale from A two octaves higher down to A.

B \flat Chromatic

Two staves of musical notation for the B \flat Chromatic scale. The first staff shows the ascending scale from B \flat to B \flat two octaves higher. The second staff shows the descending scale from B \flat two octaves higher down to B \flat .

B Chromatic

Two staves of musical notation for the B Chromatic scale. The first staff shows the ascending scale from B to B two octaves higher. The second staff shows the descending scale from B two octaves higher down to B.

Euphonium
Dorian Scales
1 Octave

Euphonium
Dorischen Tonleitern
1 Oktave

Euphonium
Gammes Doriennes
1 Octave

D Dorian



G Dorian



C Dorian



F Dorian



B \flat Dorian



E \flat Dorian



A \flat Dorian



C# Dorian



F# Dorian



B Dorian



E Dorian



A Dorian



Euphonium
Harmonic Minor Scales
1 Octave

Euphonium
Harmonischen Moll-Tonleitern
1 Oktave

Euphonium
Gammes Mineures Harmoniques
1 Octave

A Harmonic Minor



D Harmonic Minor



G Harmonic Minor



C Harmonic Minor



F Harmonic Minor



Bb Harmonic Minor



Eb Harmonic Minor



Ab Harmonic Minor



C# Harmonic Minor



F# Harmonic Minor



B Harmonic Minor



E Harmonic Minor



Euphonium
Thirds
1 Octave

Euphonium
Drittel
1 Oktave

Euphonium
Troisièmes
1 Octave

A Harmonic Minor



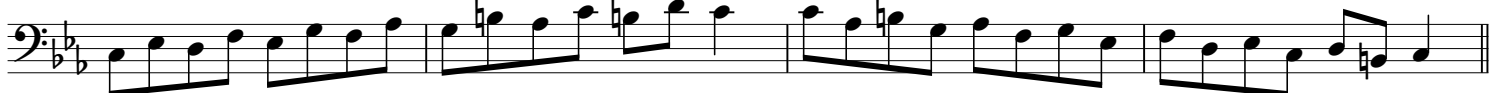
D Harmonic Minor



G Harmonic Minor



C Harmonic Minor



F Harmonic Minor



Bb Harmonic Minor



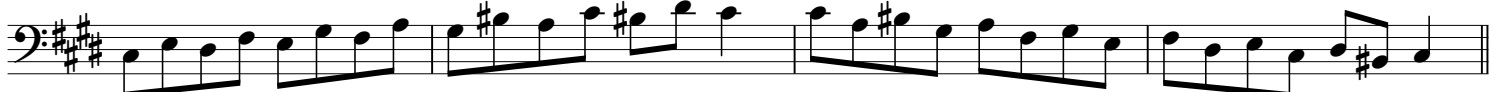
Eb Harmonic Minor



Ab Harmonic Minor



C# Harmonic Minor



F# Harmonic Minor



B Harmonic Minor



E Harmonic Minor



Euphonium
Fourths
1 Octave

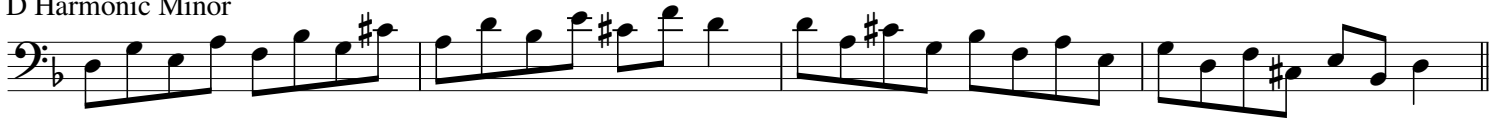
Euphonium
Viertel
1 Oktave

Euphonium
Quatrièmes
1 Octave

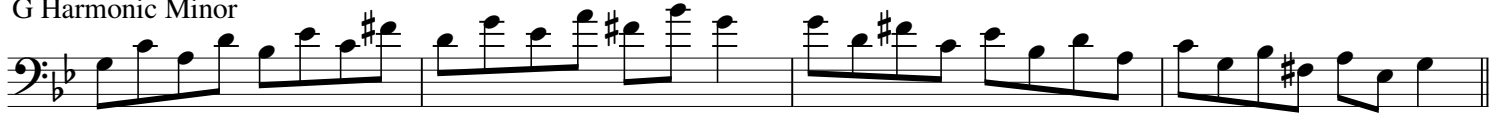
A Harmonic Minor



D Harmonic Minor



G Harmonic Minor



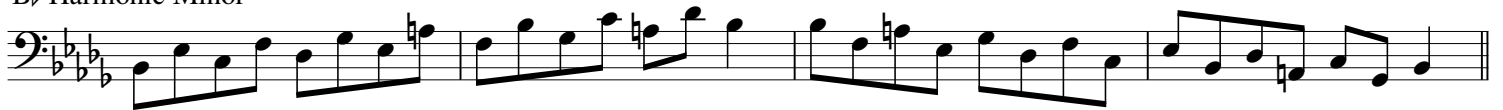
C Harmonic Minor



F Harmonic Minor



Bb Harmonic Minor

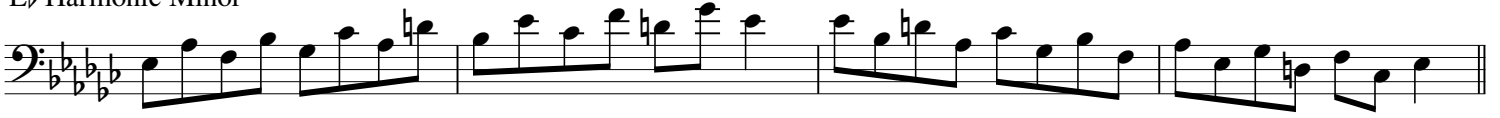


Euphonium
Fourths
1 Octave

Euphonium
Viertel
1 Oktave

Euphonium
Quatrièmes
1 Octave

E♭ Harmonic Minor



A♭ Harmonic Minor



C# Harmonic Minor



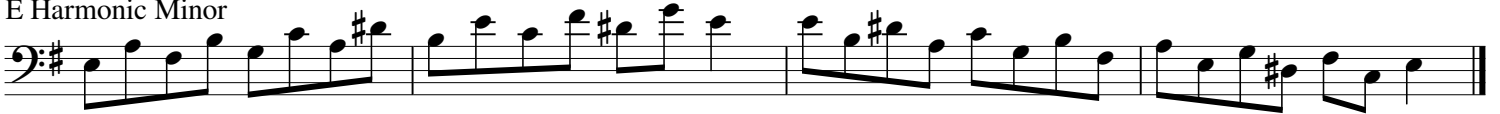
F# Harmonic Minor



B Harmonic Minor



E Harmonic Minor

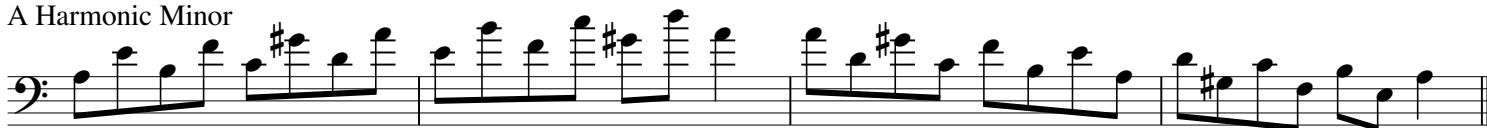


Euphonium
Fifths
1 Octave

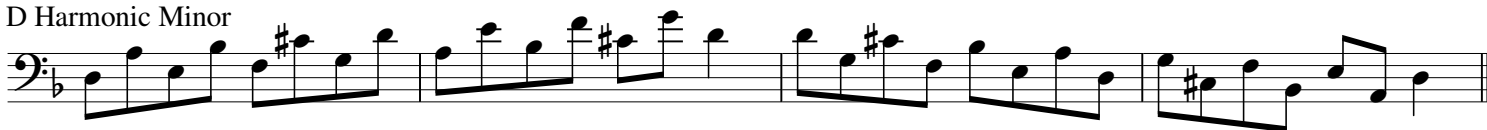
Euphonium
Fünftel
1 Oktave

Euphonium
Cinquièmes
1 Octave

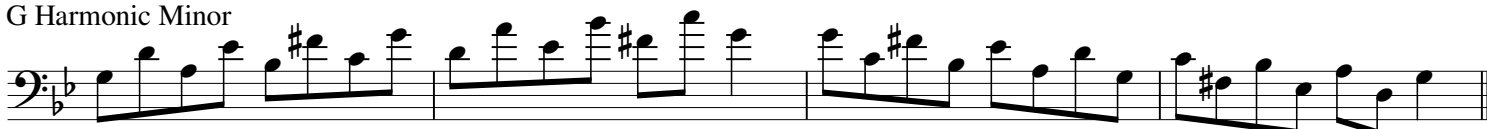
A Harmonic Minor



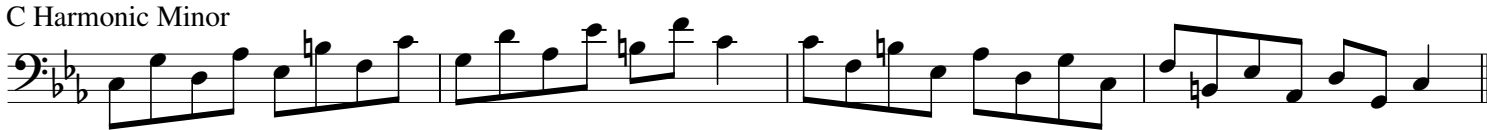
D Harmonic Minor



G Harmonic Minor



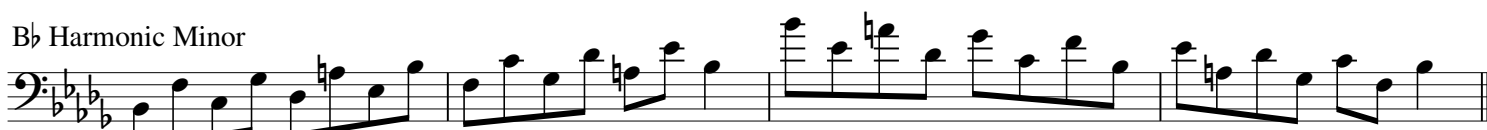
C Harmonic Minor



F Harmonic Minor



Bb Harmonic Minor



Euphonium
Fifths
1 Octave

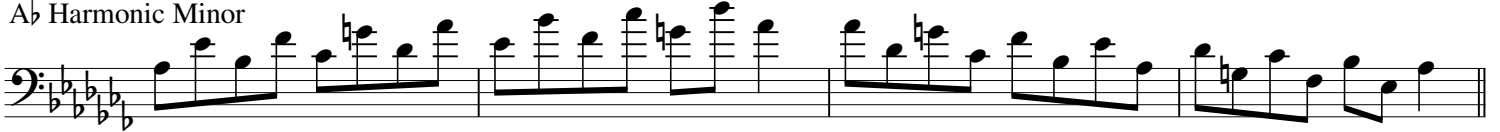
Euphonium
Fünftel
1 Oktave

Euphonium
Cinquièmes
1 Octave

E♭ Harmonic Minor



A♭ Harmonic Minor



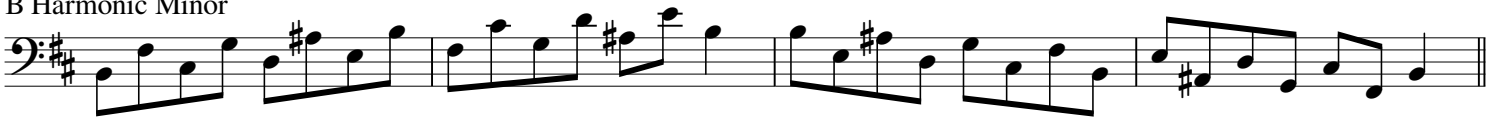
C# Harmonic Minor



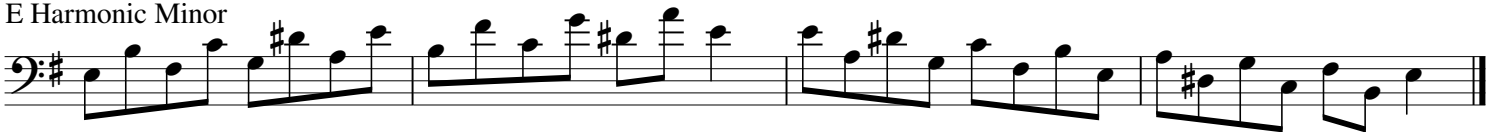
F# Harmonic Minor



B Harmonic Minor



E Harmonic Minor



Euphonium
Sixths
1 Octave

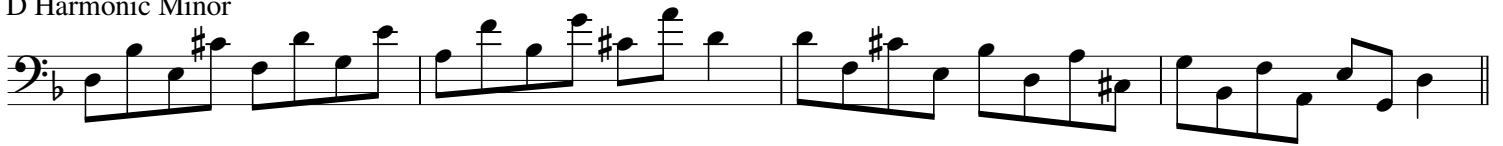
Euphonium
Sechstel
1 Oktave

Euphonium
Sixièmes
1 Octave

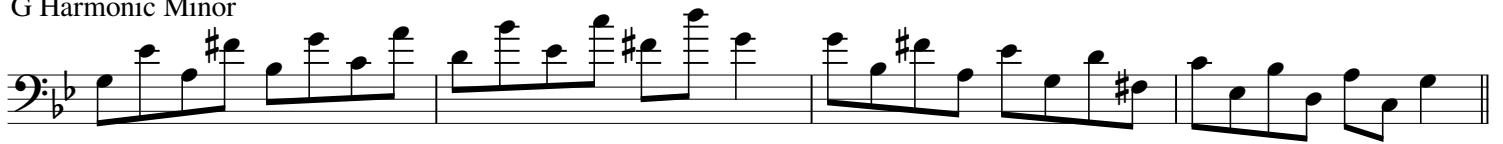
A Harmonic Minor



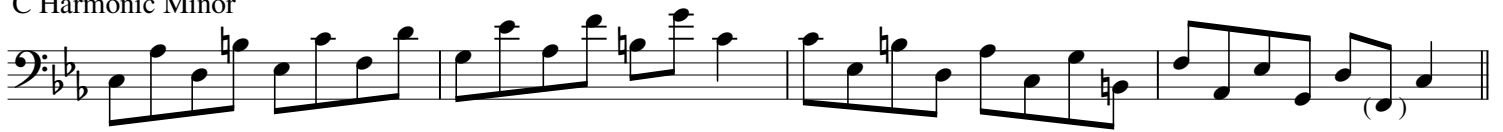
D Harmonic Minor



G Harmonic Minor



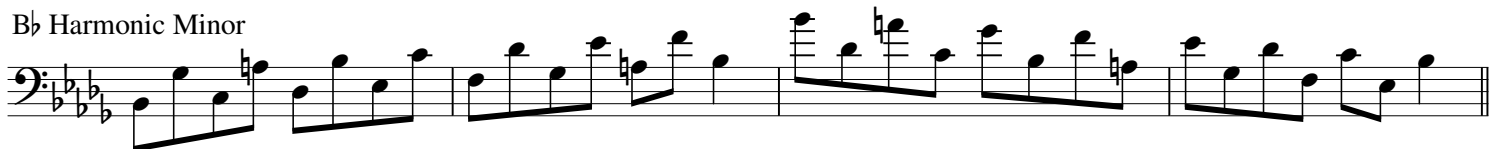
C Harmonic Minor



F Harmonic Minor



Bb Harmonic Minor

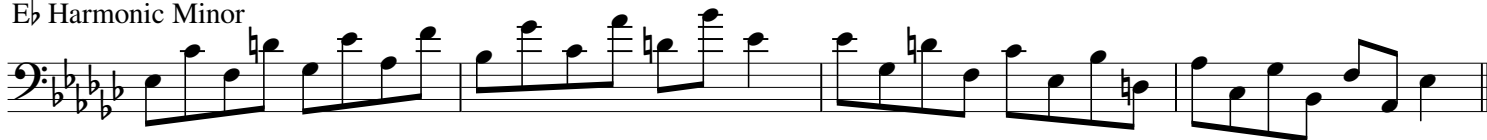


Euphonium
Sixths
1 Octave

Euphonium
Sechstel
1 Oktave

Euphonium
Sixièmes
1 Octave

E♭ Harmonic Minor



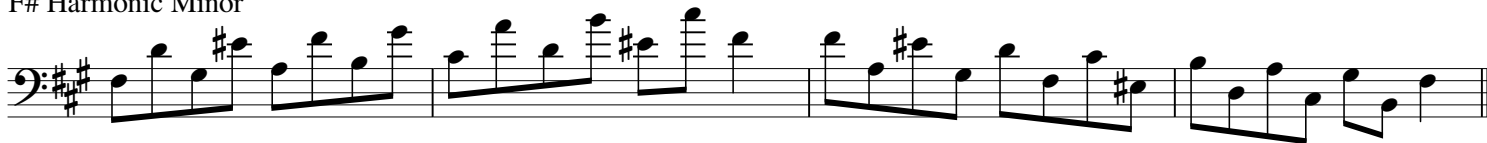
A♭ Harmonic Minor



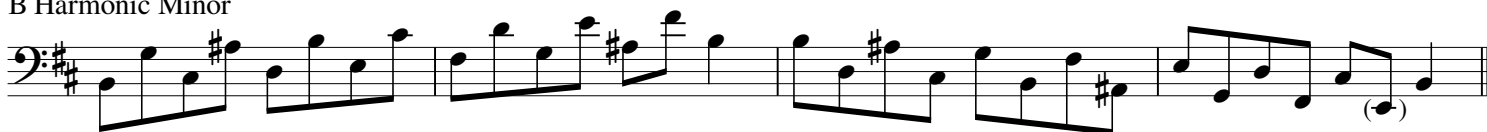
C# Harmonic Minor



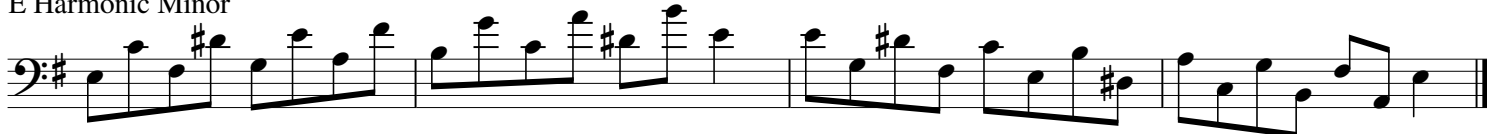
F# Harmonic Minor



B Harmonic Minor



E Harmonic Minor



Euphonium
Sevenths
1 Octave

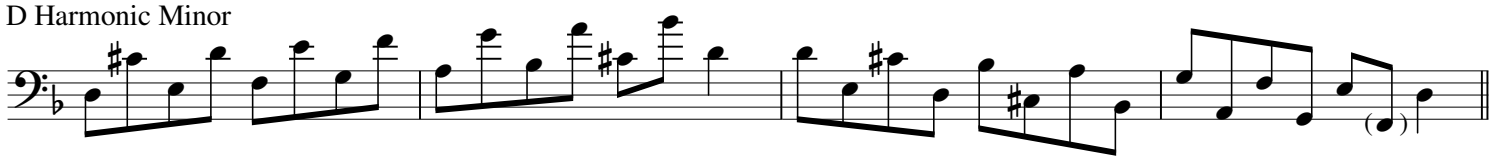
Euphonium
Septimen
1 Oktave

Euphonium
Septièmes
1 Octave

A Harmonic Minor



D Harmonic Minor



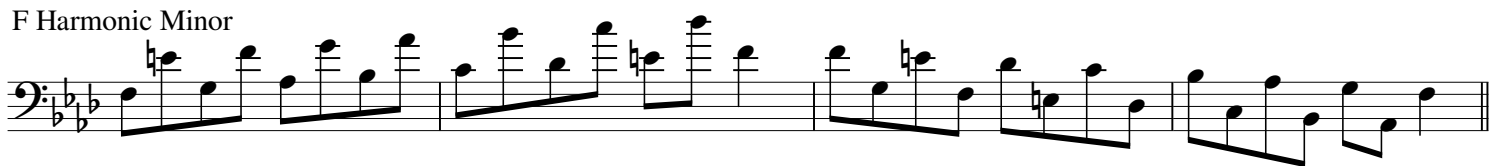
G Harmonic Minor



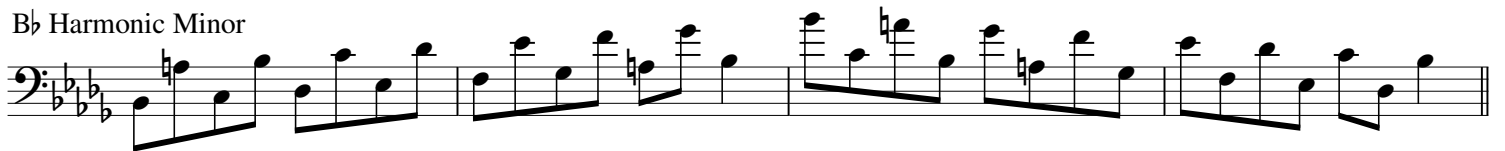
C Harmonic Minor



F Harmonic Minor



Bb Harmonic Minor

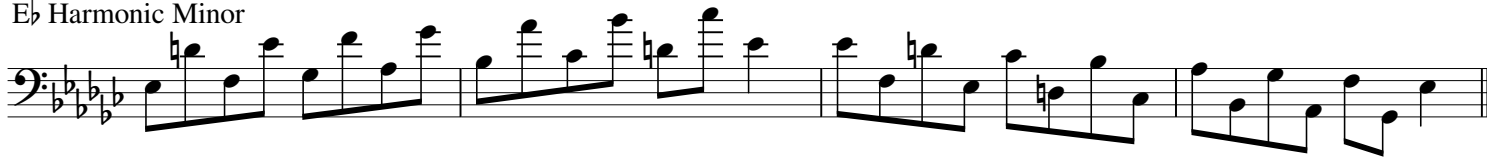


Euphonium
Sevenths
1 Octave

Euphonium
Septimen
1 Oktave

Euphonium
Septièmes
1 Octave

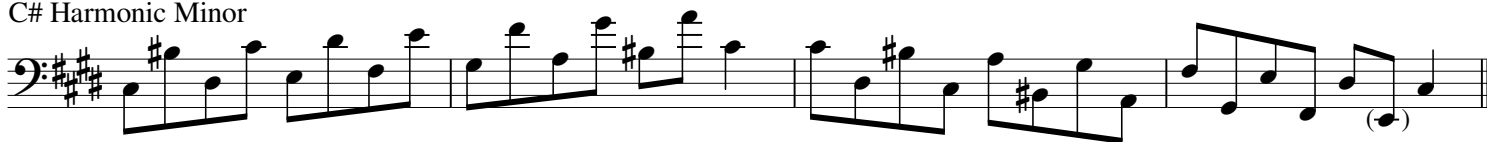
E♭ Harmonic Minor



A♭ Harmonic Minor



C# Harmonic Minor



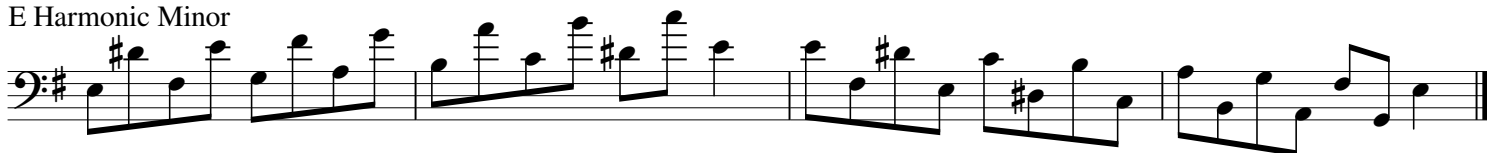
F# Harmonic Minor



B Harmonic Minor



E Harmonic Minor



Euphonium
Harmonic Minor Scales
2 Octaves

Euphonium
Harmonischen Moll-Tonleitern
2 Oktaven

Euphonium
Gammes Mineures Harmoniques
2 Octaves

A Harmonic Minor



D Harmonic Minor



G Harmonic Minor



C Harmonic Minor



F Harmonic Minor



Bb Harmonic Minor



Euphonium
Harmonic Minor Scales
2 Octaves

Euphonium
Harmonischen Moll-Tonleitern
2 Oktaven

Euphonium
Gammes Mineures Harmoniques
2 Octaves

E♭ Harmonic Minor



Musical notation for the E-flat Harmonic Minor scale, spanning two octaves. The notation is written in bass clef with a key signature of three flats (B-flat, E-flat, A-flat). The scale is presented in both ascending and descending directions, with a repeat sign at the end.

A♭ Harmonic Minor



Musical notation for the A-flat Harmonic Minor scale, spanning two octaves. The notation is written in bass clef with a key signature of four flats (B-flat, E-flat, A-flat, D-flat). The scale is presented in both ascending and descending directions, with a repeat sign at the end.

C# Harmonic Minor



Musical notation for the C-sharp Harmonic Minor scale, spanning two octaves. The notation is written in bass clef with a key signature of three sharps (F-sharp, C-sharp, G-sharp). The scale is presented in both ascending and descending directions, with a repeat sign at the end.

F# Harmonic Minor



Musical notation for the F-sharp Harmonic Minor scale, spanning two octaves. The notation is written in bass clef with a key signature of two sharps (F-sharp, C-sharp). The scale is presented in both ascending and descending directions, with a repeat sign at the end.

B Harmonic Minor



Musical notation for the B Harmonic Minor scale, spanning two octaves. The notation is written in bass clef with a key signature of two sharps (F-sharp, C-sharp). The scale is presented in both ascending and descending directions, with a repeat sign at the end.

E Harmonic Minor



Musical notation for the E Harmonic Minor scale, spanning two octaves. The notation is written in bass clef with a key signature of one sharp (F-sharp). The scale is presented in both ascending and descending directions, with a repeat sign at the end.

Euphonium
Thirds
2 Octaves

Euphonium
Drittel
2 Oktaven

Euphonium
Troisièmes
2 Octaves

A Harmonic Minor

Two staves of musical notation for the A Harmonic Minor scale. The first staff shows the ascending scale: A2, B2, C3, D3, E3, F#3, G3, A3. The second staff shows the descending scale: G3, F#3, E3, D3, C3, B2, A2. The key signature has one sharp (F#).

D Harmonic Minor

Two staves of musical notation for the D Harmonic Minor scale. The first staff shows the ascending scale: D2, E2, F2, G2, A2, B2, C#2, D2. The second staff shows the descending scale: C#2, B2, A2, G2, F2, E2, D2. The key signature has two sharps (F#, C#).

G Harmonic Minor

Two staves of musical notation for the G Harmonic Minor scale. The first staff shows the ascending scale: G2, A2, B2, C3, D3, E3, F#3, G3. The second staff shows the descending scale: F#3, E3, D3, C3, B2, A2, G2. The key signature has two sharps (F#, C#).

C Harmonic Minor

Two staves of musical notation for the C Harmonic Minor scale. The first staff shows the ascending scale: C2, D2, E2, F2, G2, A2, Bb2, C2. The second staff shows the descending scale: Bb2, A2, G2, F2, E2, D2, C2. The key signature has two flats (Bb, F).

Euphonium
Thirds
2 Octaves

Euphonium
Drittel
2 Oktaven

Euphonium
Troisièmes
2 Octaves

F Harmonic Minor

Two staves of musical notation for the F Harmonic Minor scale. The first staff contains the first four measures, and the second staff contains the remaining four measures. The scale is written in bass clef with a key signature of two flats (Bb and Eb).

Bb Harmonic Minor

Two staves of musical notation for the Bb Harmonic Minor scale. The first staff contains the first four measures, and the second staff contains the remaining four measures. The scale is written in bass clef with a key signature of three flats (Bb, Eb, and Fb).

Eb Harmonic Minor

Two staves of musical notation for the Eb Harmonic Minor scale. The first staff contains the first four measures, and the second staff contains the remaining four measures. The scale is written in bass clef with a key signature of four flats (Bb, Eb, Fb, and Gb).

Ab Harmonic Minor

Two staves of musical notation for the Ab Harmonic Minor scale. The first staff contains the first four measures, and the second staff contains the remaining four measures. The scale is written in bass clef with a key signature of five flats (Bb, Eb, Fb, Gb, and Ab).

Euphonium
Thirds
2 Octaves

Euphonium
Drittel
2 Oktaven

Euphonium
Troisièmes
2 Octaves

C# Harmonic Minor

Two staves of musical notation for the C# Harmonic Minor scale. The first staff shows the ascending scale: C#4, D4, E4, F#4, G4, A4, B4, C#5. The second staff shows the descending scale: C#5, B4, A4, G4, F#4, E4, D4, C#4.

F# Harmonic Minor

Two staves of musical notation for the F# Harmonic Minor scale. The first staff shows the ascending scale: F#4, G4, A4, B4, C#5, D5, E5, F#5. The second staff shows the descending scale: F#5, E5, D5, C#5, B4, A4, G4, F#4.

B Harmonic Minor

Two staves of musical notation for the B Harmonic Minor scale. The first staff shows the ascending scale: B4, C#5, D5, E5, F#5, G5, A5, B5. The second staff shows the descending scale: B5, A5, G5, F#5, E5, D5, C#5, B4.

E Harmonic Minor

Two staves of musical notation for the E Harmonic Minor scale. The first staff shows the ascending scale: E4, F#4, G4, A4, B4, C#5, D5, E5. The second staff shows the descending scale: E5, D5, C#5, B4, A4, G4, F#4, E4.

Euphonium
Jazz Minor Scales
1 Octave

Euphonium
Jazz-Moll-Tonleitern
1 Oktave

Euphonium
Gammes Jazz Mineures
1 Octave

A Jazz Minor



D Jazz Minor



G Jazz Minor



C Jazz Minor



F Jazz Minor



Bb Jazz Minor



Eb Jazz Minor



Ab Jazz Minor



C# Jazz Minor



F# Jazz Minor



B Jazz Minor



E Jazz Minor



Euphonium
Thirds
1 Octave

Euphonium
Drittel
1 Oktave

Euphonium
Troisièmes
1 Octave

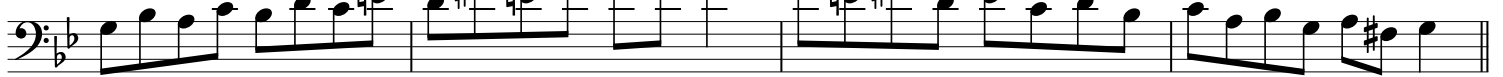
A Jazz Minor



D Jazz Minor



G Jazz Minor



C Jazz Minor



F Jazz Minor



B♭ Jazz Minor



E♭ Jazz Minor



A♭ Jazz Minor



C# Jazz Minor



F# Jazz Minor



B Jazz Minor



E Jazz Minor



Euphonium
Fourths
1 Octave

Euphonium
Viertel
1 Oktave

Euphonium
Quatrièmes
1 Octave

A Jazz Minor



D Jazz Minor



G Jazz Minor



C Jazz Minor



F Jazz Minor



B♭ Jazz Minor



E♭ Jazz Minor



A♭ Jazz Minor



C# Jazz Minor



F# Jazz Minor



B Jazz Minor



E Jazz Minor



Euphonium
Fifths
1 Octave

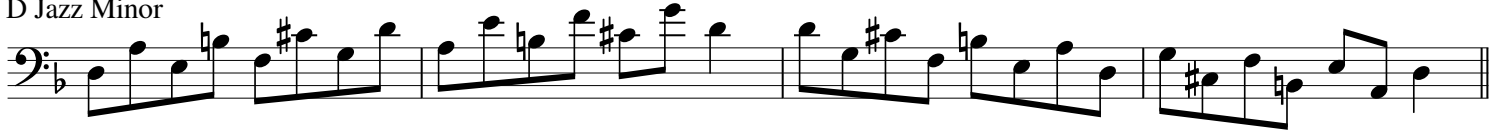
Euphonium
Fünftel
1 Oktave

Euphonium
Cinquièmes
1 Octave

A Jazz Minor



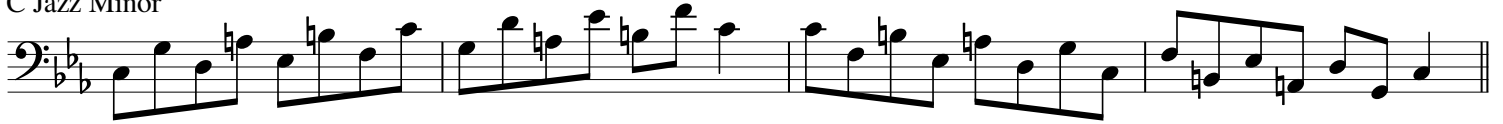
D Jazz Minor



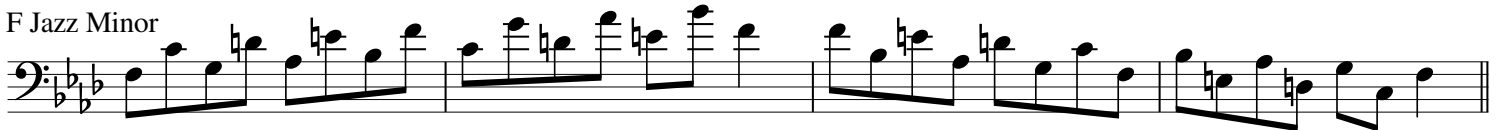
G Jazz Minor



C Jazz Minor



F Jazz Minor



B \flat Jazz Minor



Euphonium
Fifths
1 Octave

Euphonium
Fünftel
1 Oktave

Euphonium
Cinquièmes
1 Octave

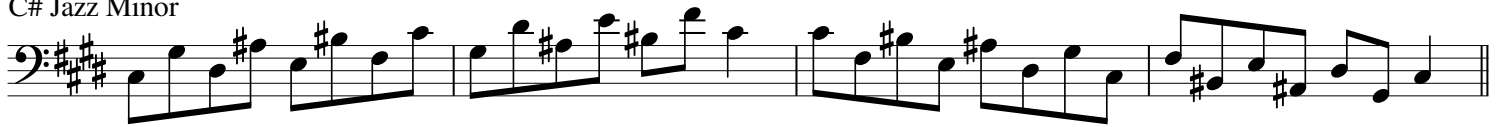
E♭ Jazz Minor



A♭ Jazz Minor



C# Jazz Minor



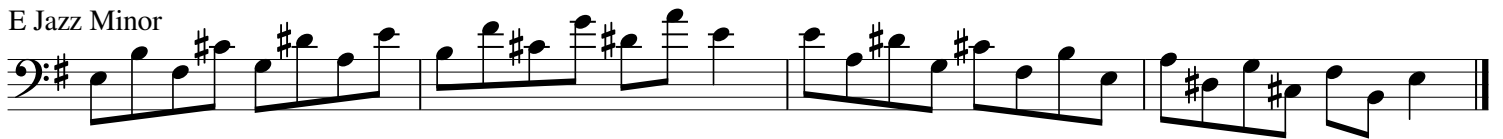
F# Jazz Minor



B Jazz Minor



E Jazz Minor



Euphonium
Sixths
1 Octave

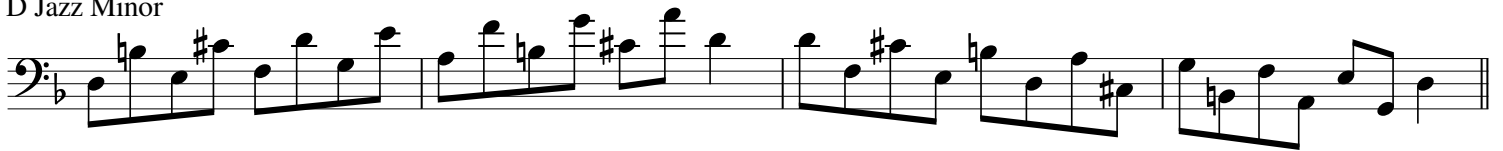
Euphonium
Sechstel
1 Oktave

Euphonium
Sixièmes
1 Octave

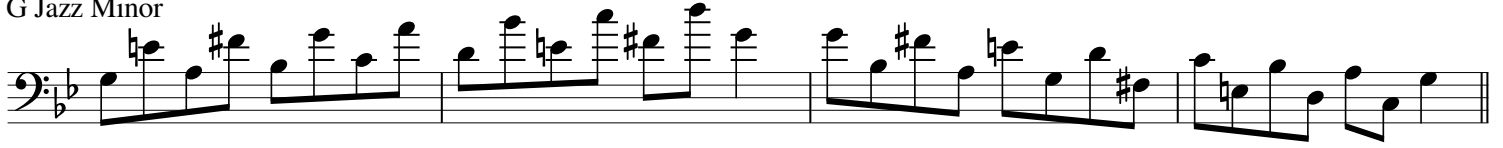
A Jazz Minor



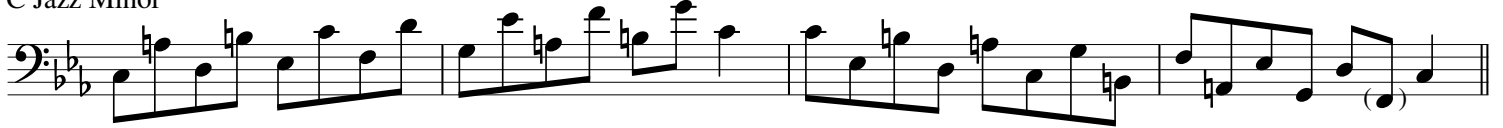
D Jazz Minor



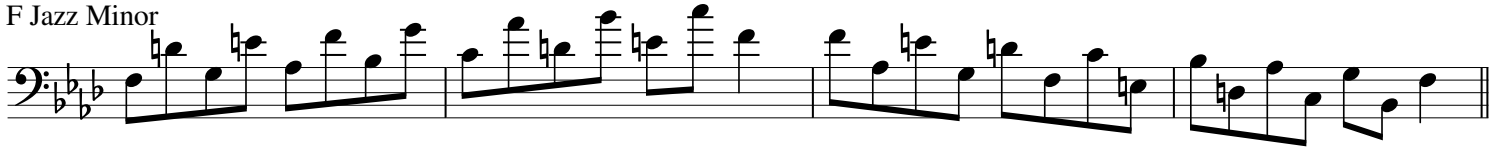
G Jazz Minor



C Jazz Minor



F Jazz Minor



Bb Jazz Minor

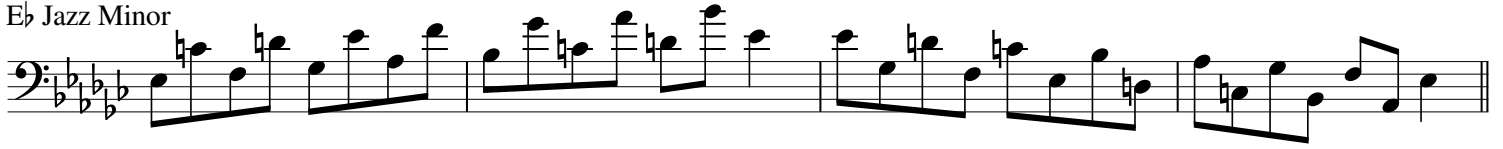


Euphonium
Sixths
1 Octave

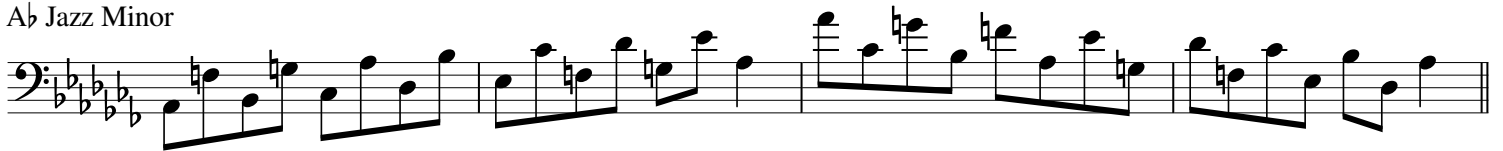
Euphonium
Sechstel
1 Oktave

Euphonium
Sixièmes
1 Octave

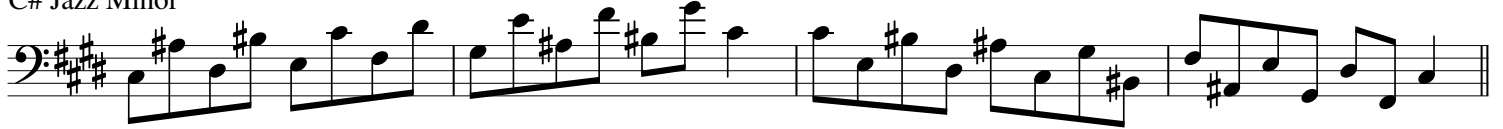
E♭ Jazz Minor



A♭ Jazz Minor



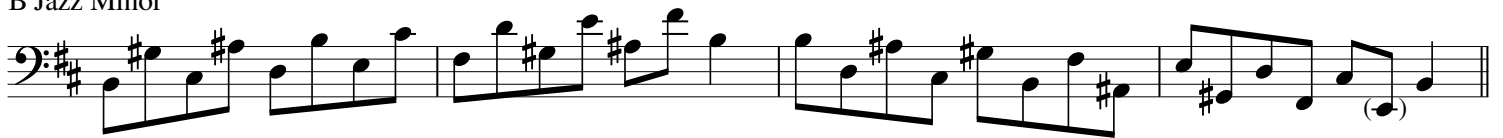
C# Jazz Minor



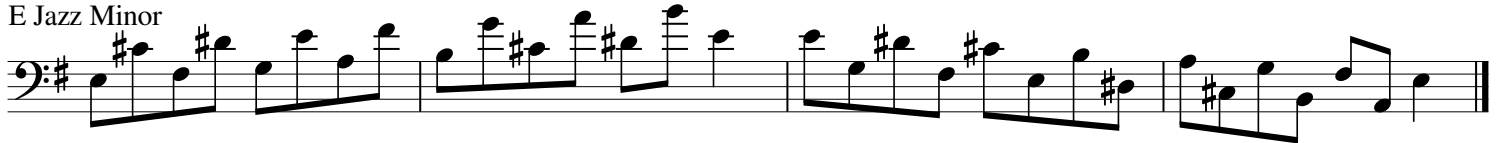
F# Jazz Minor



B Jazz Minor



E Jazz Minor



Euphonium
Sevenths
1 Octave

Euphonium
Septimen
1 Oktave

Euphonium
Septièmes
1 Octave

A Jazz Minor



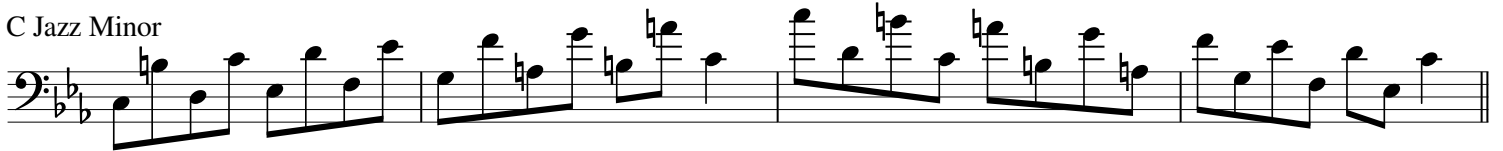
D Jazz Minor



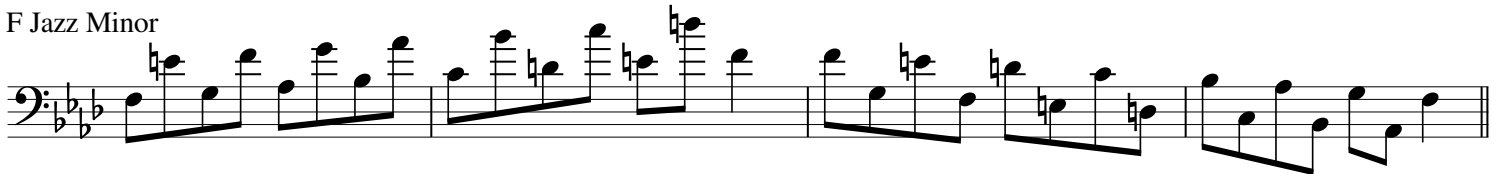
G Jazz Minor



C Jazz Minor



F Jazz Minor



Bb Jazz Minor



Euphonium
Locrian Scales
1 Octave

Euphonium
Lokrischen Tonleitern
1 Oktave

Euphonium
Gammes Locriennes
1 Octave

B Locrian



E Locrian



A Locrian



D Locrian



G Locrian



C Locrian



F Locrian



A# Locrian



D# Locrian



G# Locrian



C# Locrian



F# Locrian



Euphonium
Lydian Augmented Scales
1 Octave

Euphonium
Lydischen Übermäßige-Tonleitern
1 Oktave

Euphonium
Gammes Lydiennes Augmentés
1 Octave

F Lydian Augmented



B♭ Lydian Augmented



E♭ Lydian Augmented



A♭ Lydian Augmented



D♭ Lydian Augmented



G♭ Lydian Augmented



C♭ Lydian Augmented



E Lydian Augmented



A Lydian Augmented



D Lydian Augmented



G Lydian Augmented



C Lydian Augmented



Euphonium
Lydian Dominant Scales
1 Octave

Euphonium
Lydischen Dominant-Tonleitern
1 Oktave

Euphonium
Gammes Lydiennes Dominantes
1 Octave

F Lydian Dominant



B \flat Lydian Dominant



E \flat Lydian Dominant



A \flat Lydian Dominant



D \flat Lydian Dominant



G \flat Lydian Dominant



C \flat Lydian Dominant



E Lydian Dominant



A Lydian Dominant



D Lydian Dominant



G Lydian Dominant



C Lydian Dominant



Euphonium
Lydian Scales
1 Octave

Euphonium
Lydischen Tonleitern
1 Oktave

Euphonium
Gammes Lydiennes
1 Octave

F Lydian



B \flat Lydian



E \flat Lydian



A \flat Lydian



D \flat Lydian



G \flat Lydian



C \flat Lydian



E Lydian



A Lydian



D Lydian



G Lydian



C Lydian



Euphonium
Major Scales
1 Octave

Euphonium
Dur-Tonleitern
1 Oktave

Euphonium
Gammes Majeures
1 Octave

C Major



F Major



Bb Major



Eb Major



Ab Major



Db Major



Gb Major



B Major



E Major



A Major



D Major



G Major



Euphonium
Thirds
1 Octave

Euphonium
Drittel
1 Oktave

Euphonium
Troisièmes
1 Octave

C Major



F Major



B♭ Major



E♭ Major



A♭ Major



D♭ Major



G♭ Major



B Major



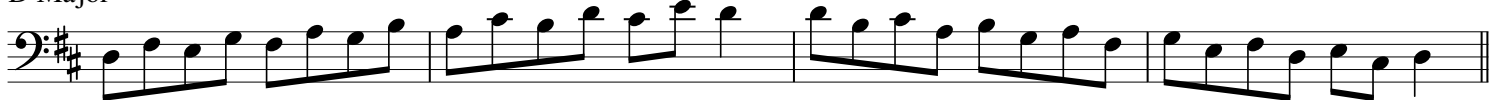
E Major



A Major



D Major



G Major



Euphonium
Fourths
1 Octave

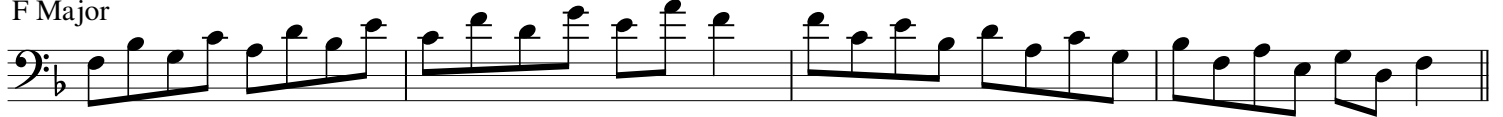
Euphonium
Viertel
1 Oktave

Euphonium
Quatrièmes
1 Octave

C Major



F Major



B♭ Major



E♭ Major



A♭ Major



D♭ Major



G♭ Major



B Major



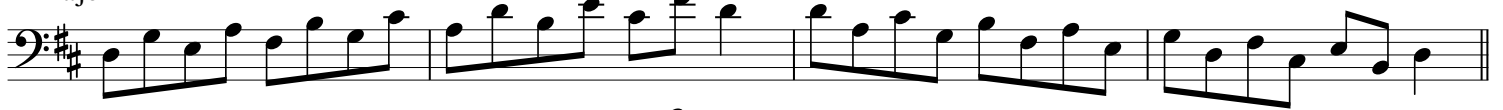
E Major



A Major



D Major



G Major

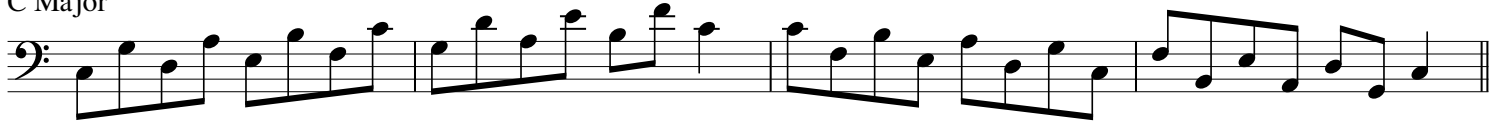


Euphonium
Fifths
1 Octave

Euphonium
Fünftel
1 Oktave

Euphonium
Cinquièmes
1 Octave

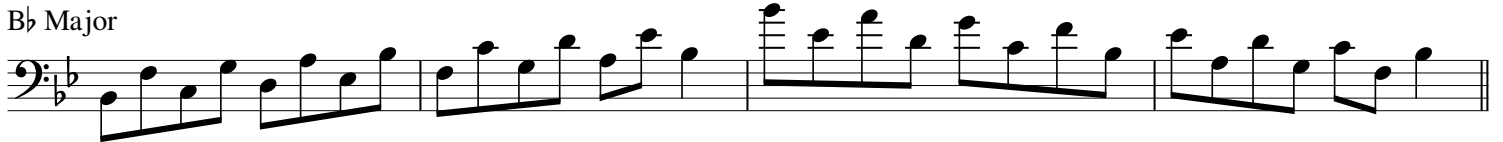
C Major



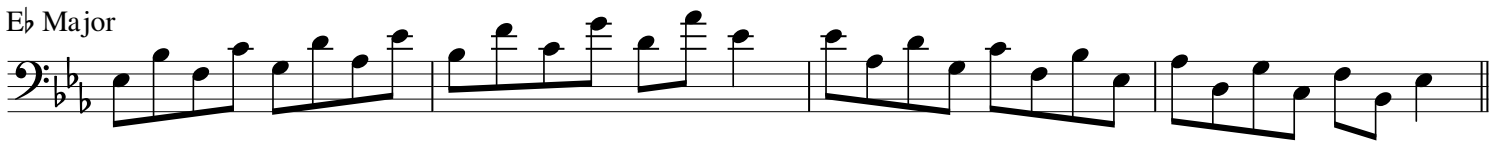
F Major



B♭ Major



E♭ Major



A♭ Major



D♭ Major



Euphonium
Major Scales
2 Octaves

Euphonium
Dur-Tonleitern
2 Oktaven

Euphonium
Gammes Majeures
2 Octaves

C Major



Musical notation for the C Major scale on Euphonium, spanning two octaves. The scale is written in bass clef with a key signature of one flat (Bb). The notation includes ascending and descending eighth-note runs, with a repeat sign at the end.

F Major



Musical notation for the F Major scale on Euphonium, spanning two octaves. The scale is written in bass clef with a key signature of two flats (Bb, Eb). The notation includes ascending and descending eighth-note runs, with a repeat sign at the end.

Bb Major



Musical notation for the Bb Major scale on Euphonium, spanning two octaves. The scale is written in bass clef with a key signature of two flats (Bb, Eb). The notation includes ascending and descending eighth-note runs, with a repeat sign at the end.

Eb Major



Musical notation for the Eb Major scale on Euphonium, spanning two octaves. The scale is written in bass clef with a key signature of three flats (Bb, Eb, Ab). The notation includes ascending and descending eighth-note runs, with a repeat sign at the end.

Ab Major



Musical notation for the Ab Major scale on Euphonium, spanning two octaves. The scale is written in bass clef with a key signature of three flats (Bb, Eb, Ab). The notation includes ascending and descending eighth-note runs, with a repeat sign at the end.

Db Major



Musical notation for the Db Major scale on Euphonium, spanning two octaves. The scale is written in bass clef with a key signature of four flats (Bb, Eb, Ab, Db). The notation includes ascending and descending eighth-note runs, with a repeat sign at the end.

Euphonium
Major Scales
2 Octaves

Euphonium
Dur-Tonleitern
2 Oktaven

Euphonium
Gammes Majeures
2 Octaves

G \flat Major



B Major



E Major



A Major



D Major



G Major

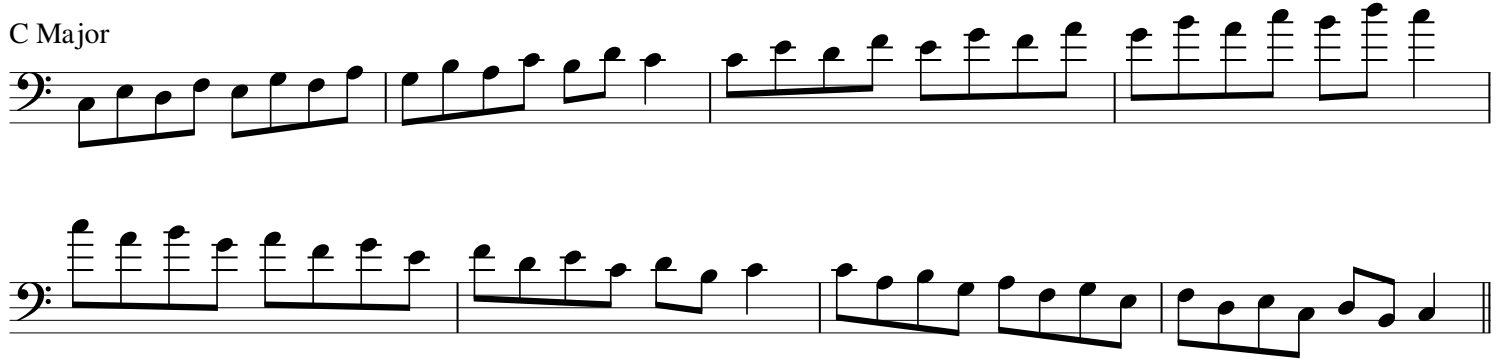


Euphonium
Thirds
2 Octaves


Euphonium
Drittel
2 Oktaven

Euphonium
Troisièmes
2 Octaves


C Major



F Major



Bb Major



Eb Major



Euphonium
Thirds
2 Octaves

Euphonium
Drittel
2 Oktaven

Euphonium
Troisièmes
2 Octaves

A \flat Major

Two staves of musical notation for Euphonium Thirds in A \flat Major. The first staff contains the first four measures, and the second staff contains the next four measures. The music consists of eighth-note patterns in the bass clef.

D \flat Major

Two staves of musical notation for Euphonium Thirds in D \flat Major. The first staff contains the first four measures, and the second staff contains the next four measures. The music consists of eighth-note patterns in the bass clef.

G \flat Major

Two staves of musical notation for Euphonium Thirds in G \flat Major. The first staff contains the first four measures, and the second staff contains the next four measures. The music consists of eighth-note patterns in the bass clef.

B Major

Two staves of musical notation for Euphonium Thirds in B Major. The first staff contains the first four measures, and the second staff contains the next four measures. The music consists of eighth-note patterns in the bass clef.

Euphonium
Thirds
2 Octaves

Euphonium
Drittel
2 Oktaven

Euphonium
Troisièmes
2 Octaves

E Major



A Major



D Major



G Major



Euphonium
Melodic Minor Scales
1 Octave

Euphonium
Melodischen Moll-Tonleitern
1 Oktave

Euphonium
Gammes Mineures Mélodiques
1 Octave

A Melodic Minor



D Melodic Minor



G Melodic Minor



C Melodic Minor



F Melodic Minor



B \flat Melodic Minor



E \flat Melodic Minor



A \flat Melodic Minor



C# Melodic Minor



F# Melodic Minor



B Melodic Minor



E Melodic Minor



Euphonium
Thirds
1 Octave

Euphonium
Drittel
1 Oktave

Euphonium
Troisièmes
1 Octave

A Melodic Minor



D Melodic Minor



G Melodic Minor



C Melodic Minor



F Melodic Minor



Bb Melodic Minor



Eb Melodic Minor



Ab Melodic Minor



C# Melodic Minor



F# Melodic Minor



B Melodic Minor



E Melodic Minor

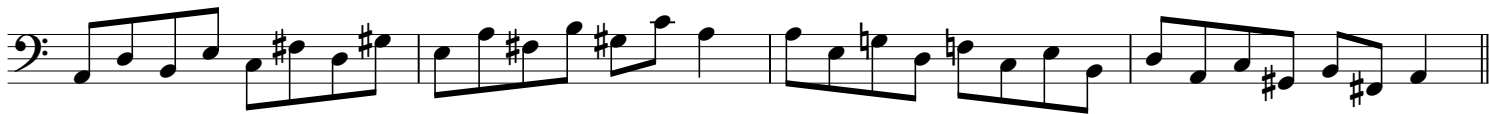


Euphonium
Fourths
1 Octave

Euphonium
Viertel
1 Oktave

Euphonium
Quatrièmes
1 Octave

A Melodic Minor



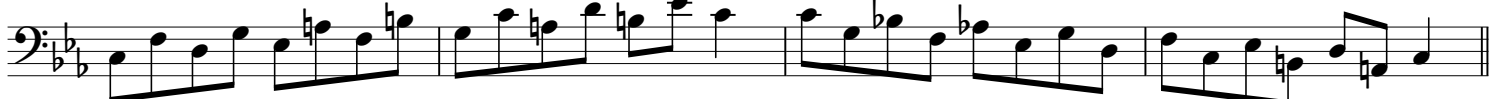
D Melodic Minor



G Melodic Minor



C Melodic Minor



F Melodic Minor



B \flat Melodic Minor



E \flat Melodic Minor



A \flat Melodic Minor



C# Melodic Minor



F# Melodic Minor



B Melodic Minor



E Melodic Minor

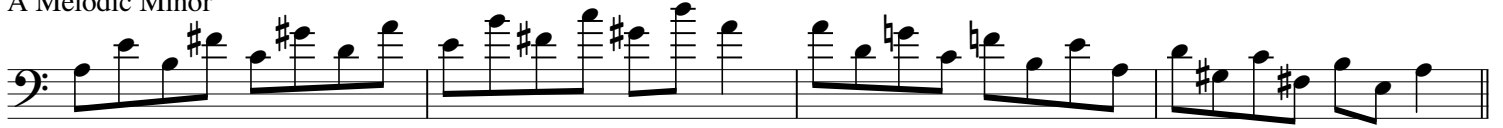


Euphonium
Fifths
1 Octave

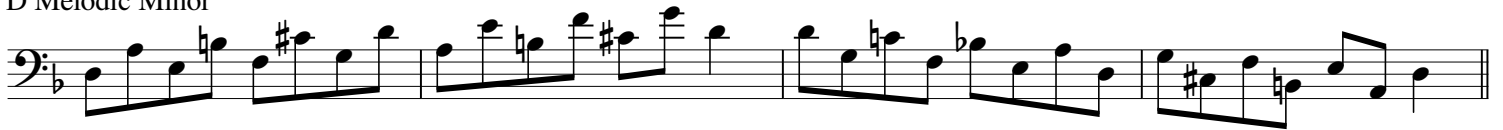
Euphonium
Fünftel
1 Oktave

Euphonium
Cinquièmes
1 Octave

A Melodic Minor



D Melodic Minor



G Melodic Minor



C Melodic Minor



F Melodic Minor



Bb Melodic Minor



Euphonium
Fifths
1 Octave

Euphonium
Fünftel
1 Oktave

Euphonium
Cinquièmes
1 Octave

E♭ Melodic Minor



A♭ Melodic Minor



C# Melodic Minor



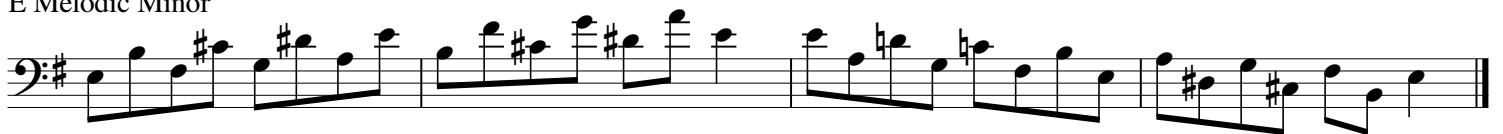
F# Melodic Minor



B Melodic Minor



E Melodic Minor



Euphonium
Sixths
1 Octave

Euphonium
Sechstel
1 Oktave

Euphonium
Sixièmes
1 Octave

A Melodic Minor



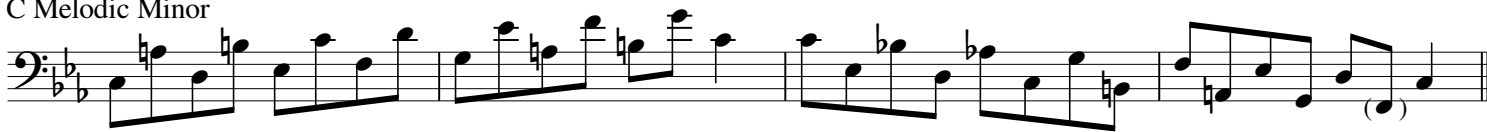
D Melodic Minor



G Melodic Minor



C Melodic Minor



F Melodic Minor



Bb Melodic Minor

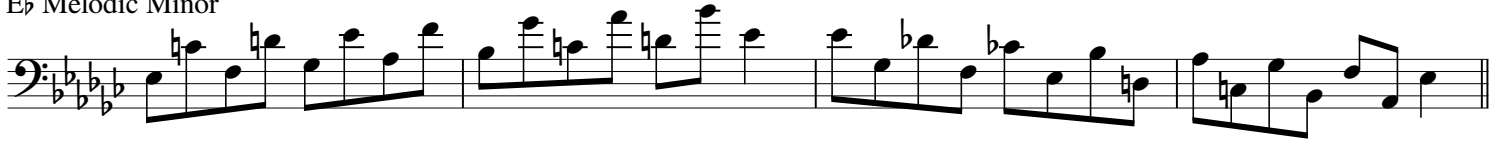


Euphonium
Sixths
1 Octave

Euphonium
Sechstel
1 Oktave

Euphonium
Sixièmes
1 Octave

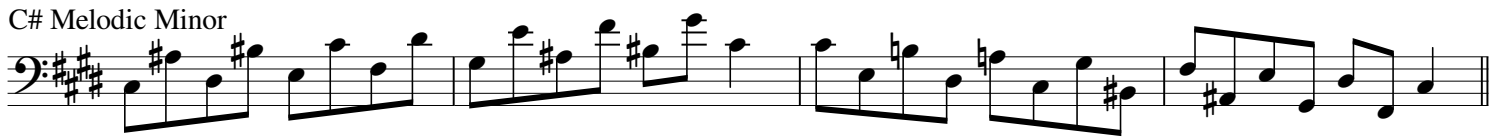
E♭ Melodic Minor



A♭ Melodic Minor



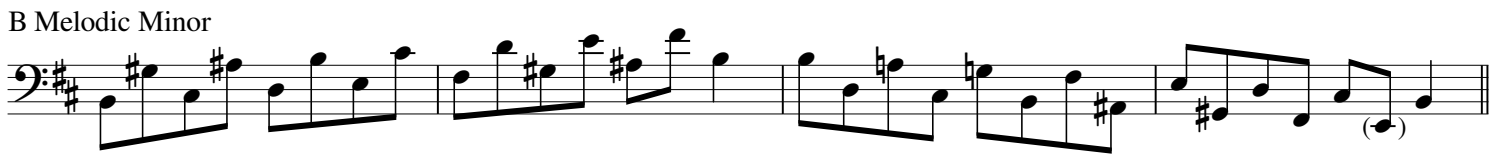
C# Melodic Minor



F# Melodic Minor



B Melodic Minor



E Melodic Minor

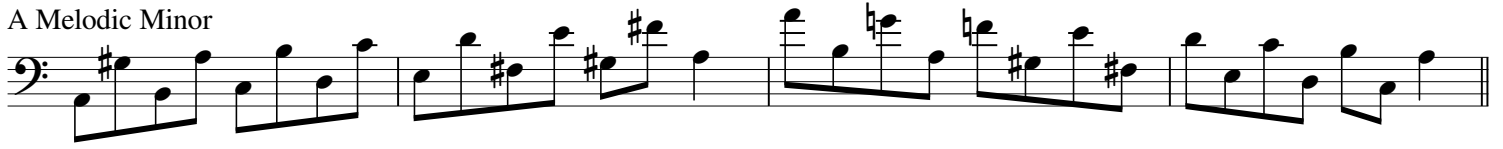


Euphonium
Sevenths
1 Octave

Euphonium
Septimen
1 Oktave

Euphonium
Septièmes
1 Octave

A Melodic Minor



D Melodic Minor



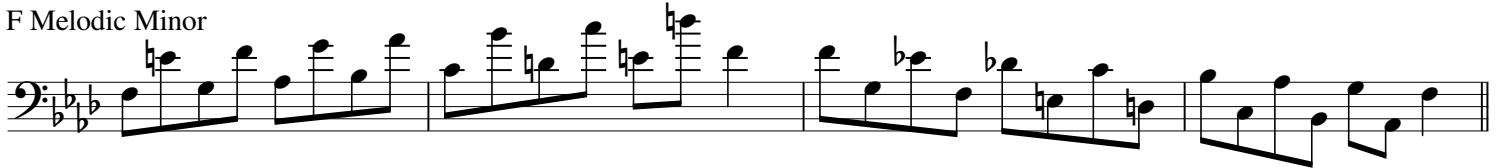
G Melodic Minor



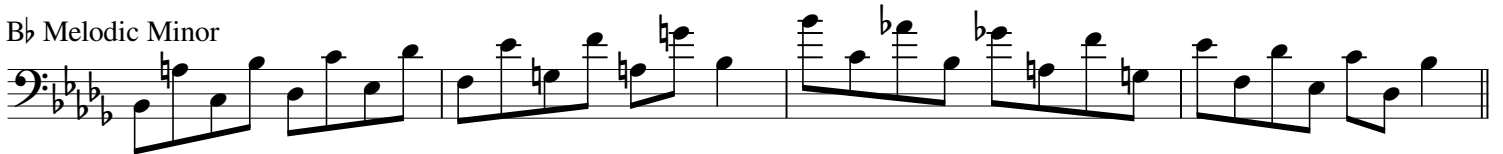
C Melodic Minor



F Melodic Minor



B \flat Melodic Minor



Euphonium
Thirds
2 Octaves

Euphonium
Drittel
2 Oktaven

Euphonium
Troisièmes
2 Octaves

A Melodic Minor

Two staves of musical notation for the A Melodic Minor scale. The first staff shows the ascending scale: A2, B2, C3, D3, E3, F#3, G3, A3. The second staff shows the descending scale: G3, F#3, E3, D3, C3, B2, A2.

D Melodic Minor

Two staves of musical notation for the D Melodic Minor scale. The first staff shows the ascending scale: D2, E2, F2, G2, A2, B2, C#2, D2. The second staff shows the descending scale: C#2, B2, A2, G2, F2, E2, D2.

G Melodic Minor

Two staves of musical notation for the G Melodic Minor scale. The first staff shows the ascending scale: G2, A2, B2, C3, D3, E3, F#3, G3. The second staff shows the descending scale: F#3, E3, D3, C3, B2, A2, G2.

C Melodic Minor

Two staves of musical notation for the C Melodic Minor scale. The first staff shows the ascending scale: C2, D2, E2, F2, G2, A2, B2, C3. The second staff shows the descending scale: B2, A2, G2, F2, E2, D2, C2.

Euphonium
Thirds
2 Octaves

Euphonium
Drittel
2 Oktaven

Euphonium
Troisièmes
2 Octaves

F Melodic Minor

Two staves of musical notation for the F Melodic Minor scale. The first staff shows the scale ascending and descending in thirds, spanning two octaves. The second staff shows the scale ascending and descending in thirds, also spanning two octaves.

B \flat Melodic Minor

Two staves of musical notation for the B \flat Melodic Minor scale. The first staff shows the scale ascending and descending in thirds, spanning two octaves. The second staff shows the scale ascending and descending in thirds, also spanning two octaves.

E \flat Melodic Minor

Two staves of musical notation for the E \flat Melodic Minor scale. The first staff shows the scale ascending and descending in thirds, spanning two octaves. The second staff shows the scale ascending and descending in thirds, also spanning two octaves.

A \flat Melodic Minor

Two staves of musical notation for the A \flat Melodic Minor scale. The first staff shows the scale ascending and descending in thirds, spanning two octaves. The second staff shows the scale ascending and descending in thirds, also spanning two octaves.

Euphonium
Thirds
2 Octaves

Euphonium
Drittel
2 Oktaven

Euphonium
Troisièmes
2 Octaves

C# Melodic Minor

Two staves of musical notation for the C# Melodic Minor scale. The first staff shows the ascending scale: C#4, D4, E4, F#4, G4, A4, B4, C#5. The second staff shows the descending scale: C#5, B4, A4, G4, F#4, E4, D4, C#4.

F# Melodic Minor

Two staves of musical notation for the F# Melodic Minor scale. The first staff shows the ascending scale: F#4, G4, A4, B4, C#5, D5, E5, F#5. The second staff shows the descending scale: F#5, E5, D5, C#5, B4, A4, G4, F#4.

B Melodic Minor

Two staves of musical notation for the B Melodic Minor scale. The first staff shows the ascending scale: B4, C#5, D5, E5, F#5, G5, A5, B5. The second staff shows the descending scale: B5, A5, G5, F#5, E5, D5, C#5, B4.

E Melodic Minor

Two staves of musical notation for the E Melodic Minor scale. The first staff shows the ascending scale: E4, F#4, G4, A4, B4, C#5, D5, E5. The second staff shows the descending scale: E5, D5, C#5, B4, A4, G4, F#4, E4.

Euphonium
Mixolydian Scales
1 Octave

Euphonium
Mixolydischen Tonleitern
1 Oktave

Euphonium
Gammes Mixolydiennes
1 Octave

G Mixolydian



C Mixolydian



F Mixolydian



Bb Mixolydian



Eb Mixolydian



Ab Mixolydian



Db Mixolydian



F# Mixolydian



B Mixolydian



E Mixolydian



A Mixolydian



D Mixolydian



Euphonium
Modal Scales
1 Octave

Euphonium
Modalen Tonleitern
1 Oktave

Euphonium
Gammes Modales
1 Octave

C Ionian



D Dorian



E Phrygian



F Lydian



G Mixolydian



A Aeolian



B Locrian



Euphonium
Modal Scales
1 Octave

Euphonium
Modalen Tonleitern
1 Oktave

Euphonium
Gammes Modales
1 Octave

F Ionian



G Dorian



A Phrygian



Bb Lydian



C Mixolydian



D Aeolian



E Locrian



Euphonium
Modal Scales
1 Octave

Euphonium
Modalen Tonleitern
1 Oktave

Euphonium
Gammes Modales
1 Octave

B \flat Ionian



C Dorian



D Phrygian



E \flat Lydian



F Mixolydian



G Aeolian



A Locrian



Euphonium
Modal Scales
1 Octave

Euphonium
Modalen Tonleitern
1 Oktave

Euphonium
Gammes Modales
1 Octave

E♭ Ionian



F Dorian



G Phrygian



A♭ Lydian



B♭ Mixolydian



C Aeolian



D Locrian



Euphonium
Modal Scales
1 Octave

Euphonium
Modalen Tonleitern
1 Oktave

Euphonium
Gammes Modales
1 Octave

A \flat Ionian



B \flat Dorian



C Phrygian



D \flat Lydian



E \flat Mixolydian



F Aeolian



G Locrian



Euphonium
Modal Scales
1 Octave

Euphonium
Modalen Tonleitern
1 Oktave

Euphonium
Gammes Modales
1 Octave

D \flat Ionian



E \flat Dorian



F Phrygian



G \flat Lydian



A \flat Mixolydian



B \flat Aeolian



C Locrian



Euphonium
Modal Scales
1 Octave

Euphonium
Modalen Tonleitern
1 Oktave

Euphonium
Gammes Modales
1 Octave

G \flat Ionian



A \flat Dorian



B \flat Phrygian



C \flat Lydian



D \flat Mixolydian



E \flat Aeolian



F Locrian



Euphonium
Modal Scales
1 Octave

Euphonium
Modalen Tonleitern
1 Oktave

Euphonium
Gammes Modales
1 Octave

B Ionian



C# Dorian



D# Phrygian



E Lydian



F# Mixolydian



G# Aeolian



A# Locrian



Euphonium
Modal Scales
1 Octave

Euphonium
Modalen Tonleitern
1 Oktave

Euphonium
Gammes Modales
1 Octave

E Ionian



F# Dorian



G# Phrygian



A Lydian



B Mixolydian



C# Aeolian



D# Locrian



Euphonium
Modal Scales
1 Octave

Euphonium
Modalen Tonleitern
1 Oktave

Euphonium
Gammes Modales
1 Octave

A Ionian



B Dorian



C# Phrygian



D Lydian



E Mixolydian



F# Aeolian



G# Locrian



Euphonium
Modal Scales
1 Octave

Euphonium
Modalen Tonleitern
1 Oktave

Euphonium
Gammes Modales
1 Octave

D Ionian



E Dorian



F# Phrygian



G Lydian



A Mixolydian



B Aeolian



C# Locrian



Euphonium
Modal Scales
1 Octave

Euphonium
Modalen Tonleitern
1 Oktave

Euphonium
Gammes Modales
1 Octave

G Ionian



A Dorian



B Phrygian



C Lydian



D Mixolydian



E Aeolian



F# Locrian



Euphonium
Dorian Scales
1 Octave

Euphonium
Dorischen Tonleitern
1 Oktave

Euphonium
Gammes Doriennes
1 Octave

D Dorian



G Dorian



C Dorian



F Dorian



B \flat Dorian



E \flat Dorian



A \flat Dorian



C# Dorian



F# Dorian



B Dorian



E Dorian



A Dorian



Euphonium
Phrygian Scales
1 Octave

Euphonium
Phrygischen Tonleitern
1 Oktave

Euphonium
Gammes Phrygiennes
1 Octave

E Phrygian



A Phrygian



D Phrygian



G Phrygian



C Phrygian



F Phrygian



Bb Phrygian



D# Phrygian



G# Phrygian



C# Phrygian



F# Phrygian



B Phrygian



Euphonium
Lydian Scales
1 Octave

Euphonium
Lydischen Tonleitern
1 Oktave

Euphonium
Gammes Lydiennes
1 Octave

F Lydian



B \flat Lydian



E \flat Lydian



A \flat Lydian



D \flat Lydian



G \flat Lydian



C \flat Lydian



E Lydian



A Lydian



D Lydian



G Lydian



C Lydian



Euphonium
Mixolydian Scales
1 Octave

Euphonium
Mixolydischen Tonleitern
1 Oktave

Euphonium
Gammes Mixolydiennes
1 Octave

G Mixolydian



C Mixolydian



F Mixolydian



B♭ Mixolydian



E♭ Mixolydian



A♭ Mixolydian



D♭ Mixolydian



F# Mixolydian



B Mixolydian



E Mixolydian



A Mixolydian



D Mixolydian



Euphonium
Locrian Scales
1 Octave

Euphonium
Lokrischen Tonleitern
1 Oktave

Euphonium
Gammes Locriennes
1 Octave

B Locrian



E Locrian



A Locrian



D Locrian



G Locrian



C Locrian



F Locrian



A# Locrian



D# Locrian



G# Locrian



C# Locrian



F# Locrian



Euphonium
Natural Minor Scales
1 Octave

Euphonium
Natürlichen Moll-Tonleitern
1 Oktave

Euphonium
Gammes Mineures Naturelles
1 Octave

A Minor



D Minor



G Minor



C Minor



F Minor



Bb Minor



Eb Minor



Ab Minor



C# Minor



F# Minor



B Minor



E Minor



Euphonium
Thirds
1 Octave

Euphonium
Drittel
1 Oktave

Euphonium
Troisièmes
1 Octave

A Minor



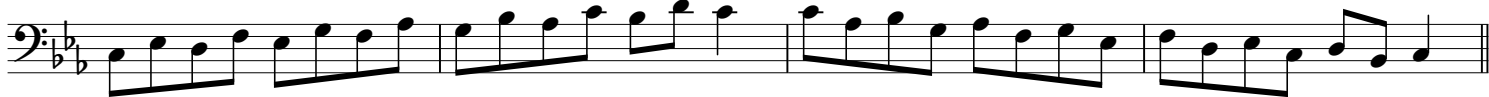
D Minor



G Minor



C Minor



F Minor



Bb Minor



Eb Minor



Ab Minor



C# Minor



F# Minor



B Minor



E Minor



Euphonium
Fourths
1 Octave

Euphonium
Viertel
1 Oktave

Euphonium
Quatrièmes
1 Octave

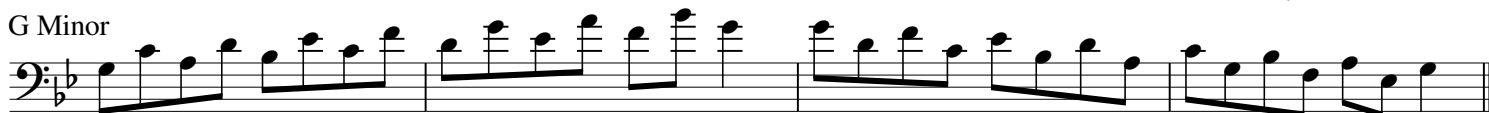
A Minor



D Minor



G Minor



C Minor



F Minor



B♭ Minor



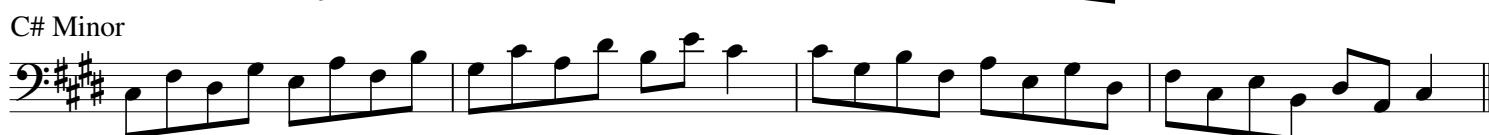
E♭ Minor



A♭ Minor




C# Minor



F# Minor



B Minor



E Minor

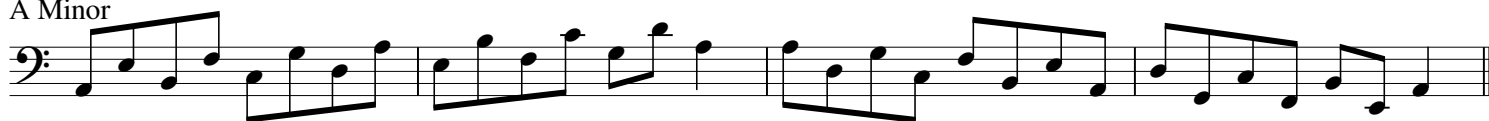


Euphonium
Fifths
1 Octave

Euphonium
Fünftel
1 Oktave

Euphonium
Cinquièmes
1 Octave

A Minor



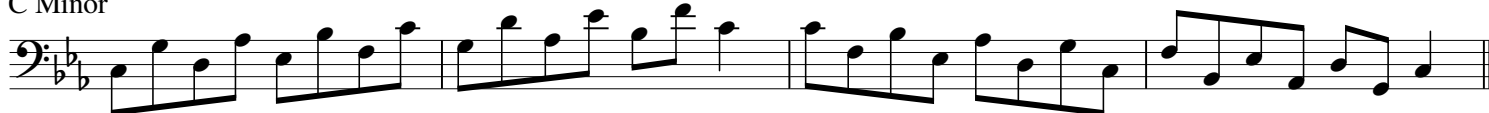
D Minor



G Minor



C Minor



F Minor



Bb Minor



Eb Minor



Ab Minor



C# Minor



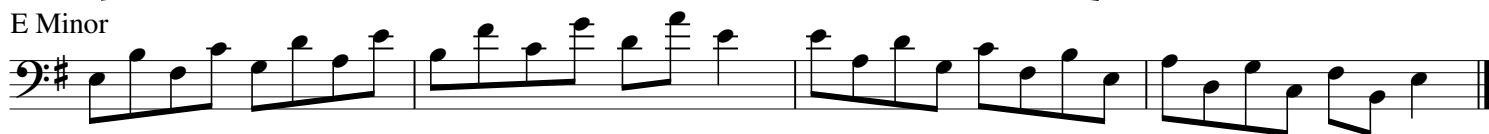
F# Minor



B Minor



E Minor



Euphonium
Sixths
1 Octave

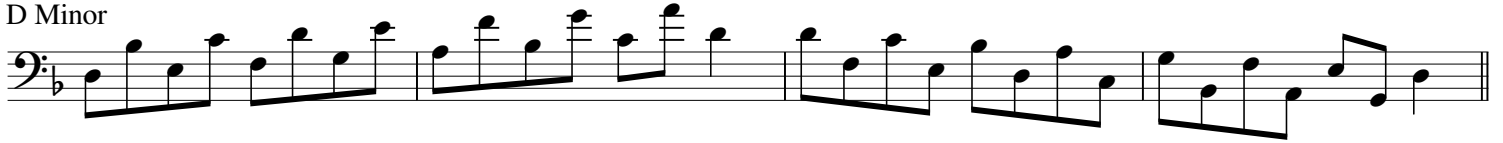
Euphonium
Sechstel
1 Oktave

Euphonium
Sixièmes
1 Octave

A Minor



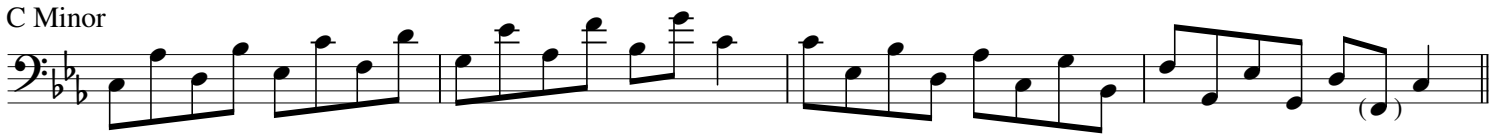
D Minor



G Minor



C Minor



F Minor



B \flat Minor

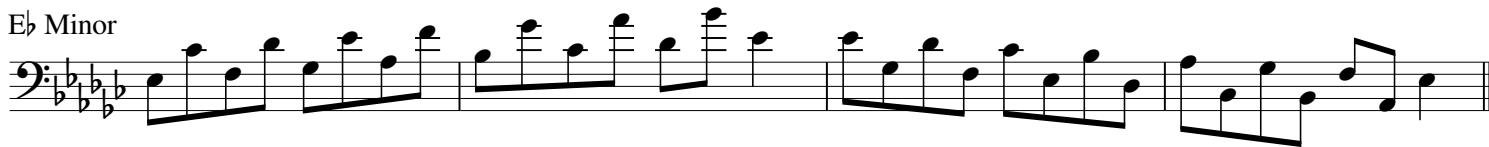


Euphonium
Sixths
1 Octave

Euphonium
Sechstel
1 Oktave

Euphonium
Sixièmes
1 Octave

E♭ Minor



A♭ Minor



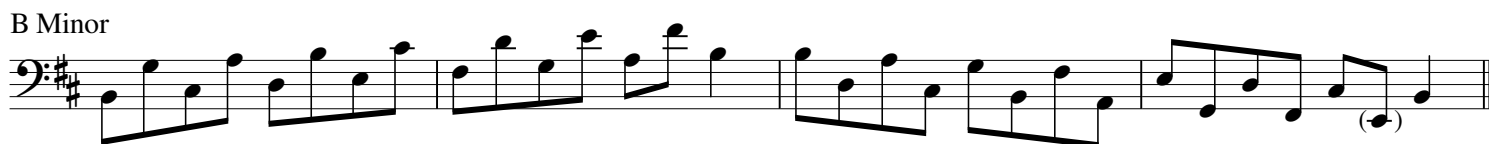
C# Minor



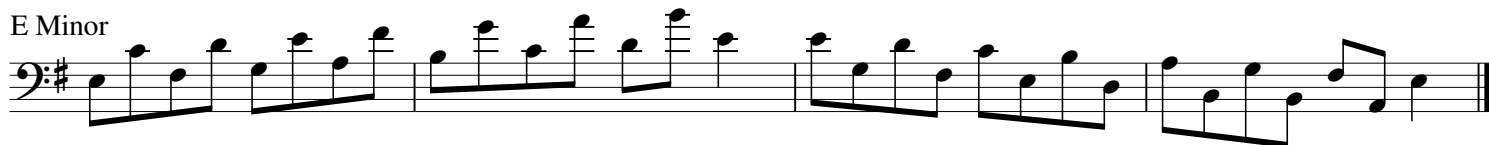
F# Minor



B Minor



E Minor



Euphonium
Natural Minor Scales
2 Octaves

Euphonium
Natürlichen Moll-Tonleitern
2 Oktaven

Euphonium
Gammes Mineures Naturelles
2 Octaves

A Minor



D Minor



G Minor



C Minor



F Minor



Bb Minor



Euphonium
Natural Minor Scales
2 Octaves

Euphonium
Natürlichen Moll-Tonleitern
2 Oktaven

Euphonium
Gammes Mineures Naturelles
2 Octaves

E♭ Minor



A♭ Minor



C# Minor



F# Minor



B Minor



E Minor



Euphonium
Thirds
2 Octaves

Euphonium
Drittel
2 Oktaven

Euphonium
Troisièmes
2 Octaves

A Minor

Two staves of musical notation for the A Minor exercise. The first staff contains the first four measures, and the second staff contains the next four measures. The music is written in bass clef with a key signature of one flat (Bb) and a 3/4 time signature. It consists of eighth and sixteenth notes, including some triplets.

D Minor

Two staves of musical notation for the D Minor exercise. The first staff contains the first four measures, and the second staff contains the next four measures. The music is written in bass clef with a key signature of two flats (Bb, Eb) and a 3/4 time signature. It consists of eighth and sixteenth notes, including some triplets.

G Minor

Two staves of musical notation for the G Minor exercise. The first staff contains the first four measures, and the second staff contains the next four measures. The music is written in bass clef with a key signature of two flats (Bb, Eb) and a 3/4 time signature. It consists of eighth and sixteenth notes, including some triplets.

C Minor

Two staves of musical notation for the C Minor exercise. The first staff contains the first four measures, and the second staff contains the next four measures. The music is written in bass clef with a key signature of three flats (Bb, Eb, Ab) and a 3/4 time signature. It consists of eighth and sixteenth notes, including some triplets.

Euphonium
Thirds
2 Octaves

Euphonium
Drittel
2 Oktaven

Euphonium
Troisièmes
2 Octaves

F Minor

Bb Minor

Eb Minor

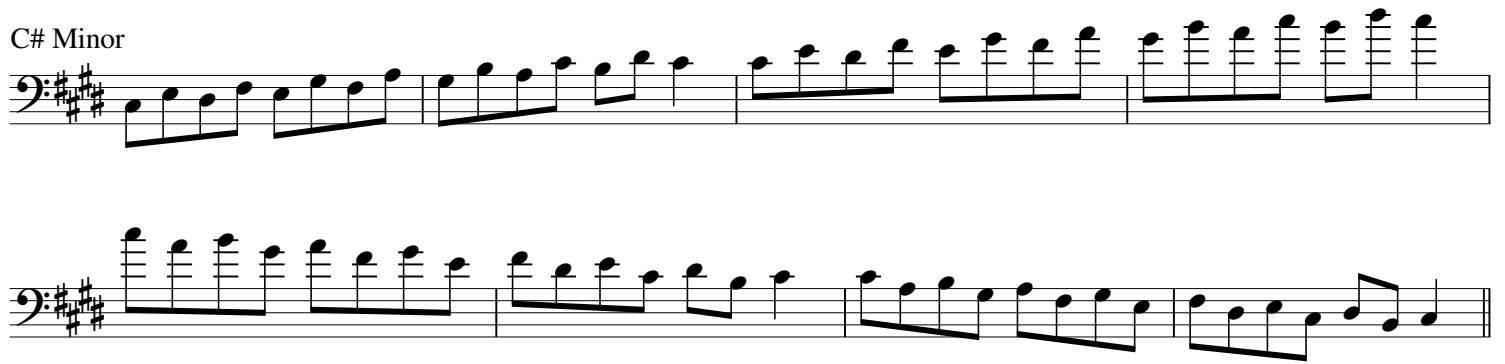
Ab Minor

Euphonium
Thirds
2 Octaves

Euphonium
Drittel
2 Oktaven

Euphonium
Troisièmes
2 Octaves

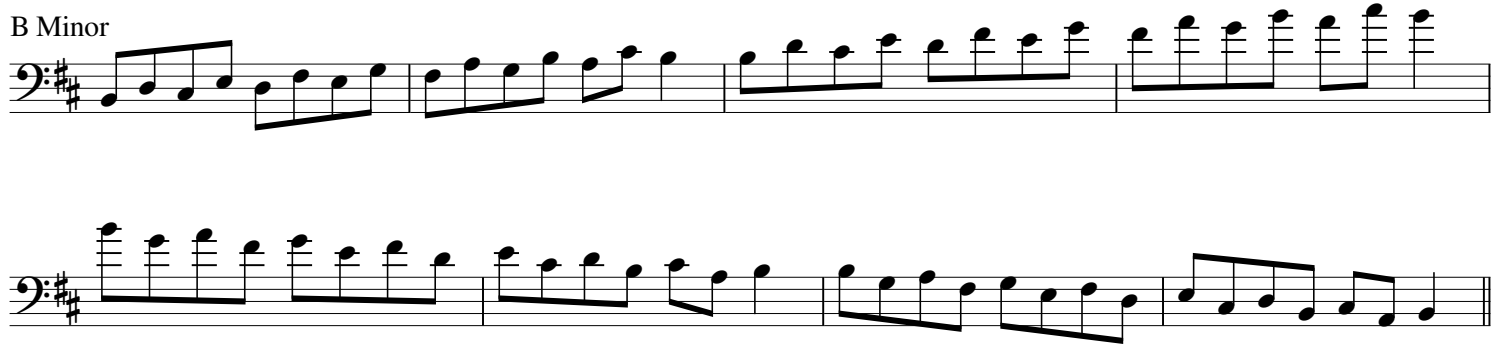
C# Minor



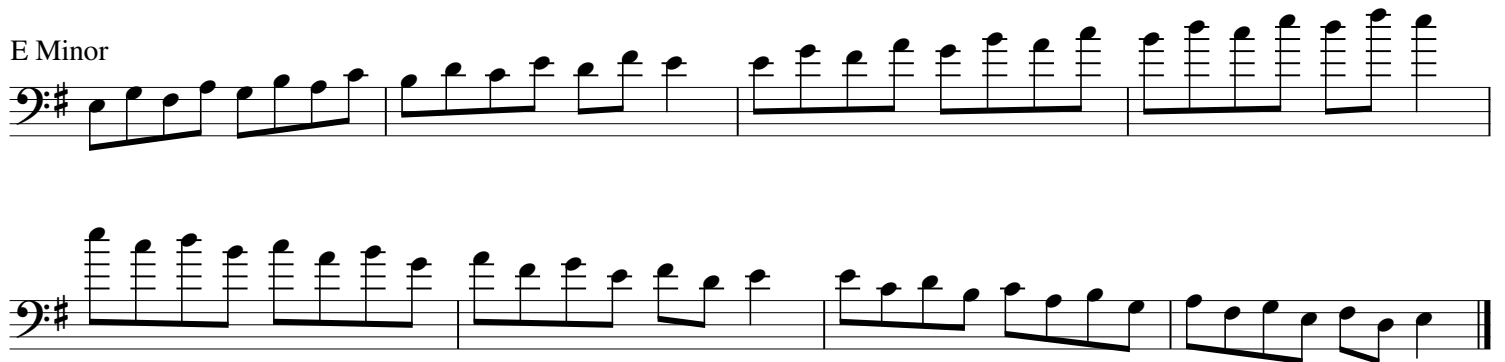
F# Minor



B Minor



E Minor



Euphonium
Octatonic Scales
1 Octave

Euphonium
Oktatonischen Tonleitern
1 Oktave

Euphonium
Gammes Octatoniques
1 Octave

C Octatonic (Half-Whole)



C Octatonic (Whole-Half)



C# Octatonic (Half-Whole)



C# Octatonic (Whole-Half)



D Octatonic (Half-Whole)



D Octatonic (Whole-Half)



Eb Octatonic (Half-Whole)



Eb Octatonic (Whole-Half)



E Octatonic (Half-Whole)



E Octatonic (Whole-Half)



F Octatonic (Half-Whole)



F Octatonic (Whole-Half)



Euphonium
Octatonic Scales
1 Octave

Euphonium
Oktatonischen Tonleitern
1 Oktave

Euphonium
Gammes Octatoniques
1 Octave

F# Octatonic (Half-Whole)

F# Octatonic (Whole-Half)



G Octatonic (Half-Whole)

G Octatonic (Whole-Half)



Ab Octatonic (Half-Whole)

Ab Octatonic (Whole-Half)



A Octatonic (Half-Whole)

A Octatonic (Whole-Half)



Bb Octatonic (Half-Whole)

Bb Octatonic (Whole-Half)



B Octatonic (Half-Whole)

B Octatonic (Whole-Half)

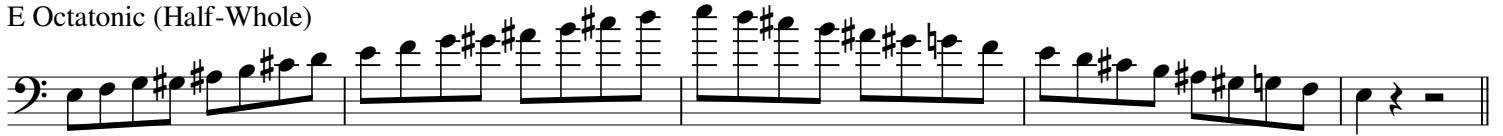


Euphonium
Octatonic Scales
2 Octaves

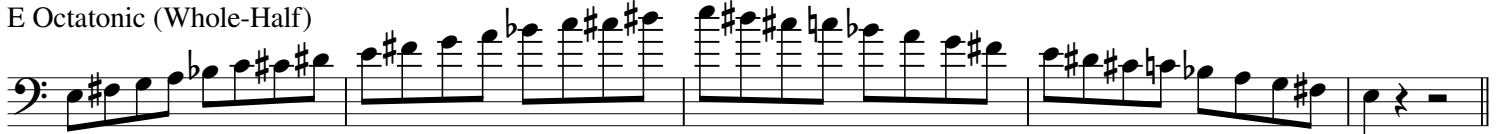
Euphonium
Oktatonischen Tonleitern
2 Oktaven

Euphonium
Gammes Octatoniques
2 Octaves

E Octatonic (Half-Whole)



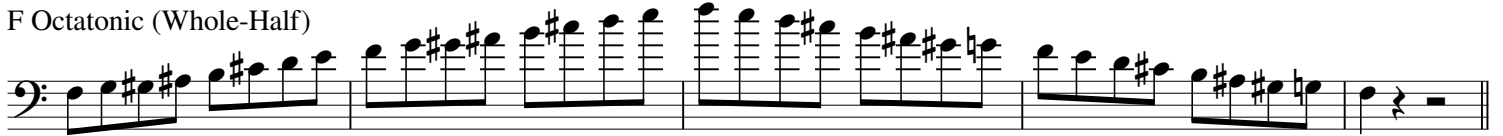
E Octatonic (Whole-Half)



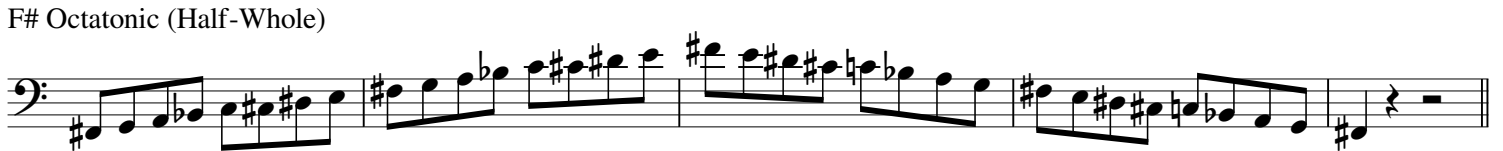
F Octatonic (Half-Whole)



F Octatonic (Whole-Half)



F# Octatonic (Half-Whole)



F# Octatonic (Whole-Half)



G Octatonic (Half-Whole)



G Octatonic (Whole-Half)



Euphonium
Octatonic Scales
2 Octaves

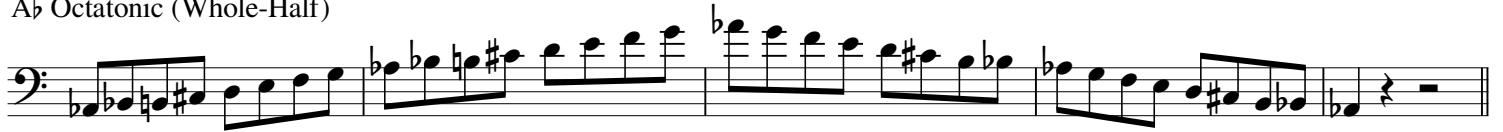
Euphonium
Oktatonischen Tonleitern
2 Oktaven

Euphonium
Gammes Octatoniques
2 Octaves

A \flat Octatonic (Half-Whole)



A \flat Octatonic (Whole-Half)



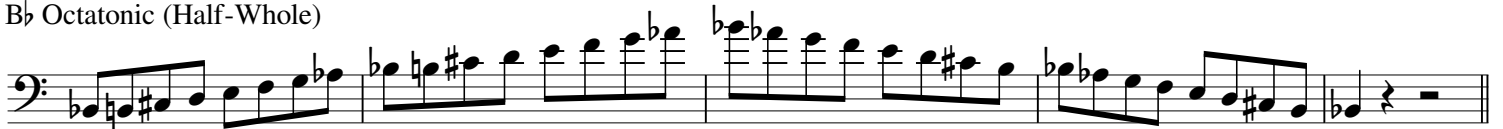
A Octatonic (Half-Whole)



A Octatonic (Whole-Half)



B \flat Octatonic (Half-Whole)



B \flat Octatonic (Whole-Half)



B Octatonic (Half-Whole)



B Octatonic (Whole-Half)



Euphonium
Pentatonic Scales
1 Octave

Euphonium
Pentatonischen Tonleitern
1 Oktave

Euphonium
Gammes Pentatoniques
1 Octave

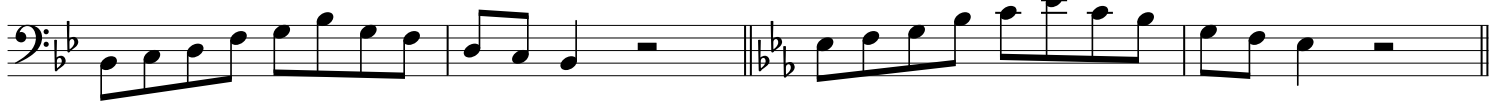
C Major Pentatonic

F Major Pentatonic



Bb Major Pentatonic

Eb Major Pentatonic



Ab Major Pentatonic

Db Major Pentatonic



Gb Major Pentatonic

B Major Pentatonic



E Major Pentatonic

A Major Pentatonic



D Major Pentatonic

G Major Pentatonic



Euphonium
Pentatonic Scales
1 Octave

Euphonium
Pentatonischen Tonleitern
1 Oktave

Euphonium
Gammes Pentatoniques
1 Octave

A Minor Pentatonic

D Minor Pentatonic



G Minor Pentatonic

C Minor Pentatonic



F Minor Pentatonic

Bb Minor Pentatonic



Eb Minor Pentatonic

Ab Minor Pentatonic



C# Minor Pentatonic

F# Minor Pentatonic



B Minor Pentatonic

E Minor Pentatonic



Euphonium
Pentatonic Scales
2 Octaves

Euphonium
Pentatonischen Tonleitern
2 Oktaven

Euphonium
Gammes Pentatoniques
2 Octaves

C Major Pentatonic

F Major Pentatonic

Two musical staves in bass clef. The first staff shows the C Major Pentatonic scale (C4-G4) in two octaves, ascending and then descending. The second staff shows the F Major Pentatonic scale (F4-C5) in two octaves, ascending and then descending. Both scales are written in a rhythmic pattern of quarter notes.

B \flat Major Pentatonic

E \flat Major Pentatonic

Two musical staves in bass clef. The first staff shows the B \flat Major Pentatonic scale (B \flat 4-F4) in two octaves, ascending and then descending. The second staff shows the E \flat Major Pentatonic scale (E \flat 4-B \flat 4) in two octaves, ascending and then descending. Both scales are written in a rhythmic pattern of quarter notes.

A \flat Major Pentatonic

D \flat Major Pentatonic

Two musical staves in bass clef. The first staff shows the A \flat Major Pentatonic scale (A \flat 4-F4) in two octaves, ascending and then descending. The second staff shows the D \flat Major Pentatonic scale (D \flat 4-A \flat 4) in two octaves, ascending and then descending. Both scales are written in a rhythmic pattern of quarter notes.

G \flat Major Pentatonic

B Major Pentatonic

Two musical staves in bass clef. The first staff shows the G \flat Major Pentatonic scale (G \flat 4-E4) in two octaves, ascending and then descending. The second staff shows the B Major Pentatonic scale (B4-F#4) in two octaves, ascending and then descending. Both scales are written in a rhythmic pattern of quarter notes.

E Major Pentatonic

A Major Pentatonic

Two musical staves in bass clef. The first staff shows the E Major Pentatonic scale (E4-B4) in two octaves, ascending and then descending. The second staff shows the A Major Pentatonic scale (A4-F#4) in two octaves, ascending and then descending. Both scales are written in a rhythmic pattern of quarter notes.

D Major Pentatonic

G Major Pentatonic

Two musical staves in bass clef. The first staff shows the D Major Pentatonic scale (D4-A4) in two octaves, ascending and then descending. The second staff shows the G Major Pentatonic scale (G4-F#4) in two octaves, ascending and then descending. Both scales are written in a rhythmic pattern of quarter notes.

Euphonium
Pentatonic Scales
2 Octaves

Euphonium
Pentatonischen Tonleitern
2 Oktaven

Euphonium
Gammes Pentatoniques
2 Octaves

A Minor Pentatonic

D Minor Pentatonic

Musical notation for A Minor and D Minor Pentatonic scales. The A Minor scale is shown in two octaves, starting on A2 and ending on A4. The D Minor scale is also shown in two octaves, starting on D2 and ending on D4. Both scales are written in bass clef with a key signature of one flat.

G Minor Pentatonic

C Minor Pentatonic

Musical notation for G Minor and C Minor Pentatonic scales. The G Minor scale is shown in two octaves, starting on G2 and ending on G4. The C Minor scale is also shown in two octaves, starting on C2 and ending on C4. Both scales are written in bass clef with a key signature of two flats.

F Minor Pentatonic

Bb Minor Pentatonic

Musical notation for F Minor and Bb Minor Pentatonic scales. The F Minor scale is shown in two octaves, starting on F2 and ending on F4. The Bb Minor scale is also shown in two octaves, starting on Bb2 and ending on Bb4. Both scales are written in bass clef with a key signature of three flats.

Eb Minor Pentatonic

Ab Minor Pentatonic

Musical notation for Eb Minor and Ab Minor Pentatonic scales. The Eb Minor scale is shown in two octaves, starting on Eb2 and ending on Eb4. The Ab Minor scale is also shown in two octaves, starting on Ab2 and ending on Ab4. Both scales are written in bass clef with a key signature of four flats.

C# Minor Pentatonic

F# Minor Pentatonic

Musical notation for C# Minor and F# Minor Pentatonic scales. The C# Minor scale is shown in two octaves, starting on C#2 and ending on C#4. The F# Minor scale is also shown in two octaves, starting on F#2 and ending on F#4. Both scales are written in bass clef with a key signature of three sharps.

B Minor Pentatonic

E Minor Pentatonic

Musical notation for B Minor and E Minor Pentatonic scales. The B Minor scale is shown in two octaves, starting on B2 and ending on B4. The E Minor scale is also shown in two octaves, starting on E2 and ending on E4. Both scales are written in bass clef with a key signature of two sharps.

Euphonium
Phrygian Scales
1 Octave

Euphonium
Phrygischen Tonleitern
1 Oktave

Euphonium
Gammes Phrygiennes
1 Octave

E Phrygian



A Phrygian



D Phrygian



G Phrygian



C Phrygian



F Phrygian



Bb Phrygian



D# Phrygian



G# Phrygian



C# Phrygian



F# Phrygian



B Phrygian



Euphonium
Whole Tone Scales
1 Octave

Euphonium
Ganztonleitern
1 Oktave

Euphonium
Gammes Par Tons
1 Octave

C Whole Tone

C# Whole Tone



D Whole Tone

Eb Whole Tone



E Whole Tone

F Whole Tone



Gb Whole Tone

G Whole Tone



Ab Whole Tone

A Whole Tone



Bb Whole Tone

B Whole Tone



Euphonium
Whole Tone Scales
2 Octaves

Euphonium
Ganztonleitern
2 Oktaven

Euphonium
Gammes Par Tons
2 Octaves

C Whole Tone

Musical notation for the C Whole Tone scale in bass clef, spanning two octaves. The scale is written in a single line with a double bar line at the end. The notes are: C2, C#2, D2, D#2, E2, E#2, F2, F#2, G2, G#2, A2, A#2, B2, B#2, C3, C#3, D3, D#3, E3, E#3, F3, F#3, G3, G#3, A3, A#3, B3, B#3, C4. The notes are grouped into four measures of four notes each.

C# Whole Tone

Musical notation for the C# Whole Tone scale in bass clef, spanning two octaves. The scale is written in a single line with a double bar line at the end. The notes are: C#2, D2, D#2, E2, E#2, F2, F#2, G2, G#2, A2, A#2, B2, B#2, C#3, D3, D#3, E3, E#3, F3, F#3, G3, G#3, A3, A#3, B3, B#3, C#4. The notes are grouped into four measures of four notes each.

D Whole Tone

Musical notation for the D Whole Tone scale in bass clef, spanning two octaves. The scale is written in a single line with a double bar line at the end. The notes are: D2, D#2, E2, E#2, F2, F#2, G2, G#2, A2, A#2, B2, B#2, C3, C#3, D3, D#3, E3, E#3, F3, F#3, G3, G#3, A3, A#3, B3, B#3, D4. The notes are grouped into four measures of four notes each.

Eb Whole Tone

Musical notation for the Eb Whole Tone scale in bass clef, spanning two octaves. The scale is written in a single line with a double bar line at the end. The notes are: Eb2, E2, E#2, F2, F#2, G2, G#2, Ab2, A2, A#2, B2, B#2, C3, C#3, Eb3, E3, E#3, F3, F#3, G3, G#3, Ab3, A3, A#3, B3, B#3, Eb4. The notes are grouped into four measures of four notes each.

E Whole Tone

Musical notation for the E Whole Tone scale in bass clef, spanning two octaves. The scale is written in a single line with a double bar line at the end. The notes are: E2, E#2, F2, F#2, G2, G#2, Ab2, A2, A#2, B2, B#2, C3, C#3, E3, E#3, F3, F#3, G3, G#3, Ab3, A3, A#3, B3, B#3, C4. The notes are grouped into four measures of four notes each.

F Whole Tone

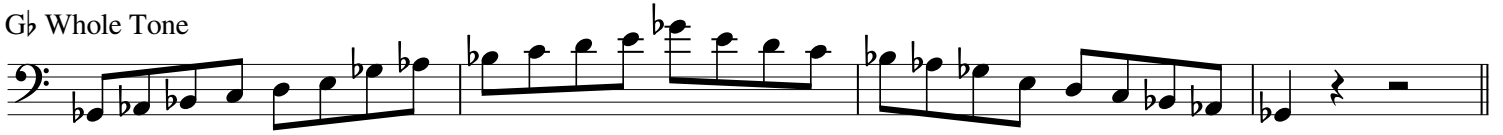
Musical notation for the F Whole Tone scale in bass clef, spanning two octaves. The scale is written in a single line with a double bar line at the end. The notes are: F2, F#2, G2, G#2, Ab2, A2, A#2, B2, B#2, C3, C#3, F3, F#3, G3, G#3, Ab3, A3, A#3, B3, B#3, C4. The notes are grouped into four measures of four notes each.

Euphonium
Whole Tone Scales
2 Octaves

Euphonium
Ganztonleitern
2 Oktaven

Euphonium
Gammes Par Tons
2 Octaves

G \flat Whole Tone



G Whole Tone



A \flat Whole Tone



A Whole Tone



B \flat Whole Tone

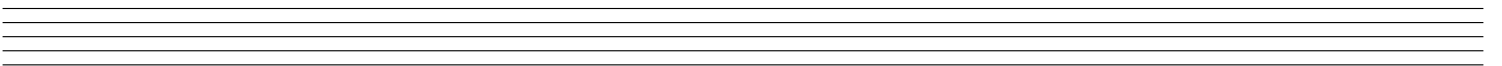
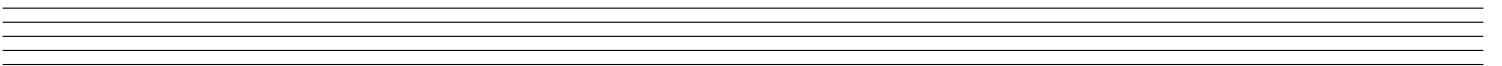
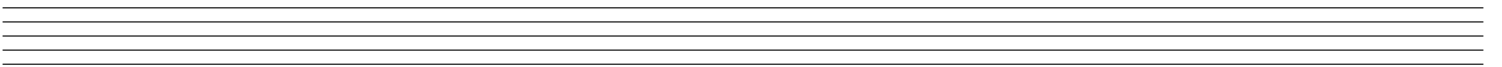
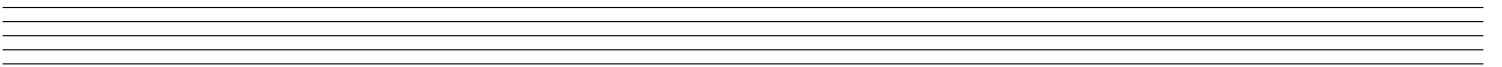
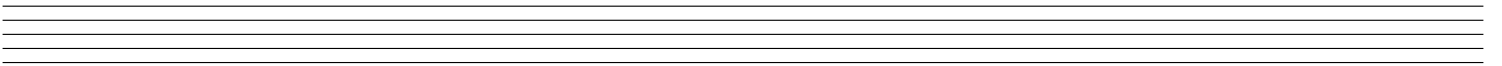
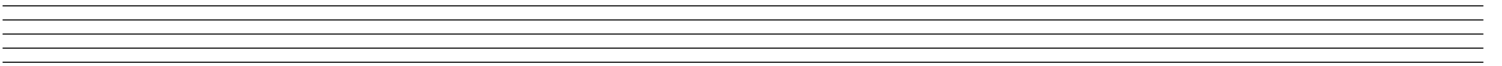
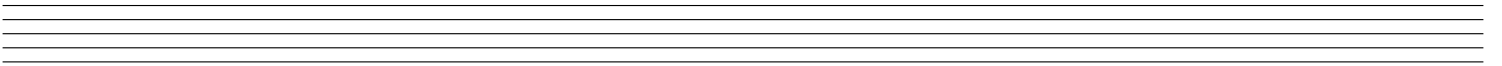
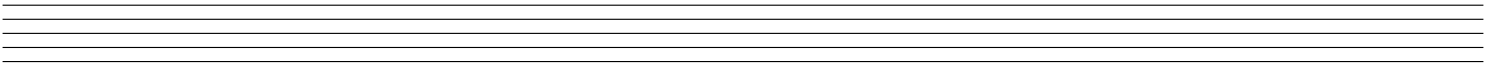
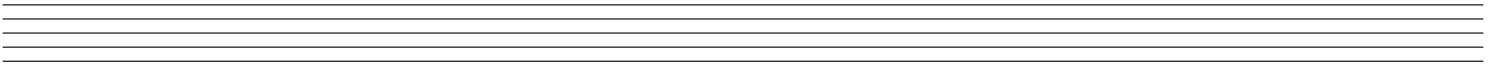
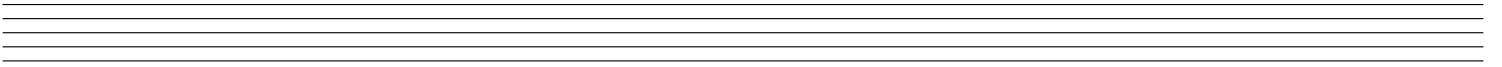
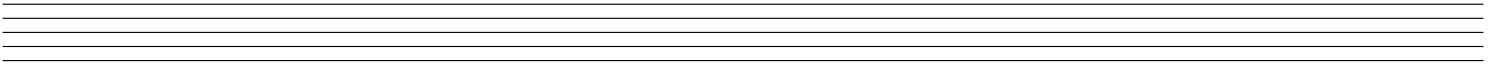


B Whole Tone



Practice Log

| Altered Scales | | | | | | | |
|-------------------------|--|--|--|--|--|--|--|
| Arpeggios | | | | | | | |
| Bebop Scales | | | | | | | |
| Blues Scales | | | | | | | |
| Chromatic Scales | | | | | | | |
| Dorian Scales | | | | | | | |
| Harmonic Minor Scales | | | | | | | |
| Jazz Minor Scales | | | | | | | |
| Locrian Scales | | | | | | | |
| Lydian Augmented Scales | | | | | | | |
| Lydian Dominant Scales | | | | | | | |
| Lydian Scales | | | | | | | |
| Major Scales | | | | | | | |
| Melodic Minor Scales | | | | | | | |
| Mixolydian Scales | | | | | | | |
| Modal Scales | | | | | | | |
| Natural Minor Scales | | | | | | | |
| Octatonic Scales | | | | | | | |
| Pentatonic Scales | | | | | | | |
| Phrygian Scales | | | | | | | |
| Whole Tone Scales | | | | | | | |
| Total Time | | | | | | | |



UNIVERSAL PUBLIC DOMAIN DEDICATION

Scales & Arpeggios for Euphonium

Altered Scales – 1 Octave
Arpeggios – 1-2 Octaves
Bebop Scales – 1 Octave
Blues Scales – 1 Octave
Chromatic Scales – 1-2 Octaves
Dorian Scales – 1 Octave
Harmonic Minor Scales – 1-2 Octaves
Jazz Minor Scales – 1 Octave
Locrian Scales – 1 Octave
Lydian Augmented Scales – 1 Octave
Lydian Dominant Scales – 1 Octave
Lydian Scales – 1 Octave
Major Scales – 1-2 Octaves
Melodic Minor Scales – 1-2 Octaves
Mixolydian Scales – 1 Octave
Modal Scales – 1 Octave
Natural Minor Scales – 1-2 Octaves
Octatonic Scales – 1-2 Octaves
Pentatonic Scales – 1-2 Octaves
Phrygian Scales – 1 Octave
Whole Tone Scales – 1-2 Octaves

This book contains charts of the most commonly practiced scales and arpeggios in Western music education programs.