



SCALES & ARPEGGIOS FOR  
**VIOLA**

---

REHEARSAL EDITION

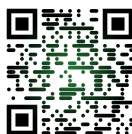
---

ENGRAVED BY R. L. ROY

# Contents

---

Altered Scales . . . . .	1
Arpeggios . . . . .	2
Bebop Scales . . . . .	17
Blues Scales . . . . .	21
Chromatic Scales . . . . .	23
Dorian Scales . . . . .	27
Harmonic Minor Scales . . . . .	28
Jazz Minor Scales . . . . .	41
Locrian Scales . . . . .	49
Lydian Augmented Scales . . . . .	50
Lydian Dominant Scales . . . . .	51
Lydian Scales . . . . .	52
Major Scales . . . . .	53
Melodic Minor Scales . . . . .	66
Mixolydian Scales . . . . .	79
Modal Scales . . . . .	80
Natural Minor Scales . . . . .	97
Octatonic Scales . . . . .	110
Pentatonic Scales . . . . .	115
Phrygian Scales . . . . .	119
Whole Tone Scales . . . . .	120
Practice Log . . . . .	123
Manuscript Paper . . . . .	124



Open Access

Viola  
Altered Scales (Super Locrian)  
1 Octave

Viola  
Alterierten Tonleitern  
1 Oktave

Alto  
Gammes Altérées  
1 Octave

C Altered

F Altered



A# Altered

D# Altered



G# Altered

C# Altered



F# Altered

B Altered



E Altered

A Altered



D Altered

G Altered



Viola  
Arpeggios  
1 Octave

Viola  
Arpeggios  
1 Oktave

Alto  
Arpèges  
1 Octave

**Major/Dur/Majeur**

Musical notation for Major Arpeggios, showing 12 examples in bass clef with a 1-octave range. The notes are: C, F, Bb, Eb, Ab, Db, Gb, B, E, A, D, G.

**Minor/Moll/Mineur**

Musical notation for Minor Arpeggios, showing 12 examples in bass clef with a 1-octave range. The notes are: A, D, G, C, F, Bb, Eb, Ab, C#, F#, B, E.

Viola  
Arpeggios  
1 Octave

Viola  
Arpeggios  
1 Oktave

Alto  
Arpèges  
1 Octave

**Augmented/Übermäßige/Augmenté**

Augmented chords: C, F, B $\flat$ , E $\flat$ , A $\flat$ , D $\flat$ , G $\flat$ , B, E, A, D, G.

**Diminished/Verminderte/Diminué**

Diminished chords: A, D, G, C, F, B $\flat$ , E $\flat$ , A $\flat$ , C $\sharp$ , F $\sharp$ , B, E.

Viola  
Arpeggios  
1 Octave

Viola  
Arpeggios  
1 Oktave

Alto  
Arpèges  
1 Octave

### Major Sevenths/Dur-Septimen/Septièmes Majeures

Musical notation for Major Sevenths arpeggios in various keys. The notation is presented in four rows, each containing three measures. The keys are: C, F, Bb, Eb, Ab, Db, Gb, B, E, A, D, G. Each measure shows a descending eighth-note arpeggio followed by a quarter rest.

### Dominant Sevenths/Dominant-Septimen/Septièmes Dominantes

Musical notation for Dominant Sevenths arpeggios in various keys. The notation is presented in four rows, each containing three measures. The keys are: C, F, Bb, Eb, Ab, Db, Gb, B, E, A, D, G. Each measure shows a descending eighth-note arpeggio followed by a quarter rest.

Viola  
Arpeggios  
1 Octave

Viola  
Arpeggios  
1 Oktave

Alto  
Arpegges  
1 Octave

### Minor Sevenths/Moll-Septimen/Septièmes Mineures

Musical notation for Minor Sevenths arpeggios in various keys. The notation is presented in four rows, each containing three measures. The keys are: A, D, G (first row); C, F, B $\flat$  (second row); E $\flat$ , A $\flat$ , C $\sharp$  (third row); F $\sharp$ , B, E (fourth row). Each measure shows a descending eighth-note arpeggio starting from the root note, followed by a whole rest.

### Dominant Sevenths $\flat 5$ /Dominant-Septimen $\flat 5$ /Septièmes Dominantes $\flat 5$

Musical notation for Dominant Sevenths  $\flat 5$  arpeggios in various keys. The notation is presented in four rows, each containing three measures. The keys are: C, F, B $\flat$  (first row); E $\flat$ , A $\flat$ , D $\flat$  (second row); G $\flat$ , B, E (third row); A, D, G (fourth row). Each measure shows a descending eighth-note arpeggio starting from the root note, followed by a whole rest.

Viola  
Arpeggios  
1 Octave

Viola  
Arpeggios  
1 Oktave

Alto  
Arpèges  
1 Octave

### Half-Diminished Seventh/Halben-Verminderte Septimen/Septièmes Demi-Diminués

Musical notation for Half-Diminished Seventh chords (A, D, G, C, F, Bb, D#, G#, C#, F#, B, E) in bass clef, showing arpeggiated patterns across four staves. Each staff contains three measures, one for each chord. The notes are: A (C4, Eb4, F4, G4), D (C4, Eb4, F4, G4), G (C4, Eb4, F4, G4), C (C4, Eb4, F4, G4), F (C4, Eb4, F4, G4), Bb (C4, Eb4, F4, G4), D# (C4, Eb4, F4, G4), G# (C4, Eb4, F4, G4), C# (C4, Eb4, F4, G4), F# (C4, Eb4, F4, G4), B (C4, Eb4, F4, G4), E (C4, Eb4, F4, G4).

### Diminished Seventh/Verminderte Septimen/Septièmes Diminués

Musical notation for Diminished Seventh chords (A, D, G, C, F, Bb, D#, G#, C#, F#, B, E) in bass clef, showing arpeggiated patterns across four staves. Each staff contains three measures, one for each chord. The notes are: A (C4, Eb4, F4, G4), D (C4, Eb4, F4, G4), G (C4, Eb4, F4, G4), C (C4, Eb4, F4, G4), F (C4, Eb4, F4, G4), Bb (C4, Eb4, F4, G4), D# (C4, Eb4, F4, G4), G# (C4, Eb4, F4, G4), C# (C4, Eb4, F4, G4), F# (C4, Eb4, F4, G4), B (C4, Eb4, F4, G4), E (C4, Eb4, F4, G4).



Viola  
Arpeggios  
1 Octave

Viola  
Arpeggios  
1 Oktave

Alto  
Arpèges  
1 Octave

### Major Ninths/Dur-Nonen/Neuvièmes Majeures

Major Ninths arpeggios in bass clef, showing 12 chromatic examples. Each example consists of a four-note arpeggio (root, major second, major third, major sixth) followed by a whole rest. The examples are: C, F, B $\flat$ , E $\flat$ , A $\flat$ , D $\flat$ , G $\flat$ , B, E, A, D, G.

### Minor Ninths/Moll-Nonen/Neuvièmes Mineures

Minor Ninths arpeggios in bass clef, showing 12 chromatic examples. Each example consists of a four-note arpeggio (root, minor second, minor third, minor sixth) followed by a whole rest. The examples are: A, D, G, C, F, B $\flat$ , E $\flat$ , A $\flat$ , C $\sharp$ , F $\sharp$ , B, E.

Viola  
Arpeggios  
1 Octave

Viola  
Arpeggios  
1 Oktave

Alto  
Arpèges  
1 Octave

### Dominant Ninths/Dominant-Nonen/Neuvièmes Dominantes

Musical notation for Dominant Ninths in bass clef. The notation consists of 12 measures, each representing a different dominant ninth chord. The chords are: C, F, B $\flat$ , E $\flat$ , A $\flat$ , D $\flat$ , G $\flat$ , B, E, A, D, G. Each measure shows the arpeggiated notes of the chord in a descending sequence, followed by a whole rest. The key signature changes to match the chord: C (no sharps or flats), F (one flat), B $\flat$  (two flats), E $\flat$  (three flats), A $\flat$  (three flats), D $\flat$  (three flats), G $\flat$  (three flats), B (two sharps), E (one sharp), A (two sharps), D (two sharps), G (one sharp).

### Dominant Minor Ninths/Dominant-Moll-Nonen/Neuvièmes Dominantes Mineures

Musical notation for Dominant Minor Ninths in bass clef. The notation consists of 12 measures, each representing a different dominant minor ninth chord. The chords are: C, F, B $\flat$ , E $\flat$ , A $\flat$ , D $\flat$ , G $\flat$ , B, E, A, D, G. Each measure shows the arpeggiated notes of the chord in a descending sequence, followed by a whole rest. The key signature changes to match the chord: C (no sharps or flats), F (one flat), B $\flat$  (two flats), E $\flat$  (three flats), A $\flat$  (three flats), D $\flat$  (three flats), G $\flat$  (three flats), B (two sharps), E (one sharp), A (two sharps), D (two sharps), G (one sharp).

Viola  
Arpeggios  
2 Octaves

Viola  
Arpeggios  
2 Oktaven

Alto  
Arpèges  
2 Octaves

### Major/Dur/Majeur

Musical notation for Major/Dur/Majeur arpeggios in bass clef, 2 octaves. The notation consists of four rows of three measures each. Each measure contains an arpeggiated chord. The chords are labeled as follows: Row 1: C, F, Bb; Row 2: Eb, Ab, Db; Row 3: Gb, B, E; Row 4: A, D, G.

### Minor/Moll/Mineur

Musical notation for Minor/Moll/Mineur arpeggios in bass clef, 2 octaves. The notation consists of four rows of three measures each. Each measure contains an arpeggiated chord. The chords are labeled as follows: Row 1: A, D, G; Row 2: C, F, Bb; Row 3: Eb, Ab, C#; Row 4: F#, B, E.

Viola  
Arpeggios  
2 Octaves

Viola  
Arpeggios  
2 Oktaven

Alto  
Arpèges  
2 Octaves

### Augmented/Übermäßige/Augmenté

Musical notation for the Augmented section, featuring arpeggiated chords in various keys. The notation is presented in a single staff with a treble clef and a 3/4 time signature. The chords are: C, F, Bb, Eb, Ab, Db, Gb, B, E, A, D, G.

### Diminished/Verminderte/Diminué

Musical notation for the Diminished section, featuring arpeggiated chords in various keys. The notation is presented in a single staff with a treble clef and a 3/4 time signature. The chords are: A, D, G, C, F, Bb, Eb, Ab, C#, F#, B, E.

Viola  
Arpeggios  
2 Octaves

Viola  
Arpeggios  
2 Oktaven

Alto  
Arpèges  
2 Octaves

Major Sevenths/Dur-Septimen/Septièmes Majeures

C F

B $\flat$  E $\flat$

A $\flat$  D $\flat$

G $\flat$  B

E A

D G

Viola  
Arpeggios  
2 Octaves

Viola  
Arpeggios  
2 Oktaven

Alto  
Arpèges  
2 Octaves

**Dominant Seventh/Dominant-Septimen/Septièmes Dominantes**

The image displays a musical score for Viola Arpeggios, 2 Octaves, featuring 12 dominant seventh chords. The chords are arranged in two columns of six. Each chord is represented by a musical staff with a treble clef and a 6/8 time signature. The notes are arpeggiated in a specific sequence: the first four notes of each chord are beamed together, followed by the fifth and sixth notes. The chords are: C, F, Bb, Eb, Ab, Db, Gb, B, E, A, D, and G. The key signature changes for each chord to match its notes.

Viola  
Arpeggios  
2 Octaves

Viola  
Arpeggios  
2 Oktaven

Alto  
Arpèges  
2 Octaves

Minor Sevenths/Moll-Septimen/Septièmes Mineures

A D

G C

F B $\flat$

E $\flat$  A $\flat$

C $\sharp$  F $\sharp$

B E

Viola  
Arpeggios  
2 Octaves

Viola  
Arpeggios  
2 Oktaven

Alto  
Arpegges  
2 Octaves

**Dominant Sevenths  $\flat 5$ /Dominant-Septimen  $\flat 5$ /Septièmes Dominantes  $\flat 5$**

The image shows a musical score for Viola Arpeggios, 2 Octaves, Dominant Sevenths  $\flat 5$ . The score is organized into six systems, each consisting of two staves. Each system contains two measures of music. The notes are arpeggiated in a descending pattern. The systems are labeled with chords: C, F, B $\flat$ , E $\flat$ , A $\flat$ , D $\flat$ , G $\flat$ , B, E, A, D, G. The key signatures and accidentals are indicated by flats and naturals on the notes.



Viola  
Arpeggios  
2 Octaves

Viola  
Arpeggios  
2 Oktaven

Alto  
Arpèges  
2 Octaves

Half-Diminished Seventh/Halben-Verminderte Septimen/Septièmes Demi-Diminués

A D

G C

F B $\flat$

D $\sharp$  G $\sharp$

C $\sharp$  F $\sharp$

B E

Viola  
Arpeggios  
2 Octaves

Viola  
Arpeggios  
2 Oktaven

Alto  
Arpèges  
2 Octaves

### Diminished Sevenths/Verminderte Septimen/Septièmes Diminués

A D

G C

F B $\flat$

D $\sharp$  G $\sharp$

C $\sharp$  F $\sharp$

B E

Viola  
Bebop Scales  
1 Octave

Viola  
Bebop-Tonleitern  
1 Oktave

Alto  
Gammes Bebop  
1 Octave

C Major

F Major

Two musical staves in bass clef, 6/8 time signature. The first staff shows the C Major Bebop scale: C4, D4, E4, F4, G4, A4, B4, C5, B4, A4, G4, F4, E4, D4, C4. The second staff shows the F Major Bebop scale: F4, G4, A4, Bb4, C5, Bb4, A4, G4, F4, E4, D4, C4.

Bb Major

Eb Major

Two musical staves in bass clef, 6/8 time signature. The first staff shows the Bb Major Bebop scale: Bb4, C5, D5, Eb5, F5, Eb5, D5, C5, Bb4, Ab4, G4, F4, Eb4, D4, C4. The second staff shows the Eb Major Bebop scale: Eb4, F4, G4, Ab4, Bb4, C5, Bb4, Ab4, G4, F4, Eb4, D4, C4.

Ab Major

Db Major

Two musical staves in bass clef, 6/8 time signature. The first staff shows the Ab Major Bebop scale: Ab4, Bb4, C5, Bb4, Ab4, G4, F4, Eb4, D4, C4. The second staff shows the Db Major Bebop scale: Db4, Eb4, F4, G4, Ab4, Bb4, C5, Bb4, Ab4, G4, F4, Eb4, D4, C4.

Gb Major

B Major

Two musical staves in bass clef, 6/8 time signature. The first staff shows the Gb Major Bebop scale: Gb4, Ab4, Bb4, C5, Bb4, Ab4, G4, F4, Eb4, D4, C4. The second staff shows the B Major Bebop scale: B4, C5, D5, Eb5, F5, Eb5, D5, C5, B4, Ab4, G4, F4, Eb4, D4, C4.

E Major

A Major

Two musical staves in bass clef, 6/8 time signature. The first staff shows the E Major Bebop scale: E4, F#4, G#4, A#4, B5, A#4, G#4, F#4, E4, D#4, C#4, B4, A4, G4, E4. The second staff shows the A Major Bebop scale: A4, B4, C5, B4, A4, G4, F#4, E4, D#4, C#4, B4, A4, G4, E4.

D Major

G Major

Two musical staves in bass clef, 6/8 time signature. The first staff shows the D Major Bebop scale: D4, E4, F#4, G#4, A#4, B5, A#4, G#4, F#4, E4, D#4, C#4, B4, A4, G4, D4. The second staff shows the G Major Bebop scale: G4, A4, B4, C5, B4, A4, G4, F#4, E4, D#4, C#4, B4, A4, G4, D4.

Viola  
Bebop Scales  
1 Octave

Viola  
Bebop-Tonleitern  
1 Oktave

Alto  
Gammes Bebop  
1 Octave

A Minor D Minor

The first line of music shows two scales. The first scale is A Minor, starting on A2 and ending on A3. The second scale is D Minor, starting on D2 and ending on D3. Both scales are written in bass clef with a 2/4 time signature. Each scale consists of eight eighth notes, with a flat on the 7th note and a sharp on the 8th note.

G Minor C Minor

The second line of music shows two scales. The first scale is G Minor, starting on G2 and ending on G3. The second scale is C Minor, starting on C2 and ending on C3. Both scales are written in bass clef with a 2/4 time signature. Each scale consists of eight eighth notes, with a flat on the 7th note and a sharp on the 8th note.

F Minor Bb Minor

The third line of music shows two scales. The first scale is F Minor, starting on F2 and ending on F3. The second scale is Bb Minor, starting on Bb2 and ending on Bb3. Both scales are written in bass clef with a 2/4 time signature. Each scale consists of eight eighth notes, with a flat on the 7th note and a sharp on the 8th note.

Eb Minor Ab Minor

The fourth line of music shows two scales. The first scale is Eb Minor, starting on Eb2 and ending on Eb3. The second scale is Ab Minor, starting on Ab2 and ending on Ab3. Both scales are written in bass clef with a 2/4 time signature. Each scale consists of eight eighth notes, with a flat on the 7th note and a sharp on the 8th note.

C# Minor F# Minor

The fifth line of music shows two scales. The first scale is C# Minor, starting on C#2 and ending on C#3. The second scale is F# Minor, starting on F#2 and ending on F#3. Both scales are written in bass clef with a 2/4 time signature. Each scale consists of eight eighth notes, with a sharp on the 7th note and a flat on the 8th note.

B Minor E Minor

The sixth line of music shows two scales. The first scale is B Minor, starting on B2 and ending on B3. The second scale is E Minor, starting on E2 and ending on E3. Both scales are written in bass clef with a 2/4 time signature. Each scale consists of eight eighth notes, with a sharp on the 7th note and a flat on the 8th note.

Viola  
Bebop Scales  
1 Octave

Viola  
Bebop-Tonleitern  
1 Oktave

Alto  
Gammes Bebop  
1 Octave

D Dorian

G Dorian



C Dorian

F Dorian



Bb Dorian

Eb Dorian



Ab Dorian

C# Dorian



F# Dorian

B Dorian



E Dorian

A Dorian



Viola  
Bebop Scales  
1 Octave

Viola  
Bebop-Tonleitern  
1 Oktave

Alto  
Gammes Bebop  
1 Octave

C Dominant

F Dominant



B $\flat$  Dominant

E $\flat$  Dominant



A $\flat$  Dominant

D $\flat$  Dominant



G $\flat$  Dominant

B Dominant



E Dominant

A Dominant



D Dominant

G Dominant



Viola  
Blues Scales  
1 Octave

Viola  
Bluestonleitern  
1 Oktave

Alto  
Gammes Blues  
1 Octave

A Minor Blues

D Minor Blues

Musical notation for A Minor Blues and D Minor Blues scales. The A Minor Blues scale is shown in the first system, and the D Minor Blues scale is shown in the second system. Both are written in bass clef with a 6/8 time signature. The A Minor Blues scale starts on A2 and the D Minor Blues scale starts on D2. Each scale is presented as a two-measure phrase with a repeat sign at the end.

G Minor Blues

C Minor Blues

Musical notation for G Minor Blues and C Minor Blues scales. The G Minor Blues scale is shown in the first system, and the C Minor Blues scale is shown in the second system. Both are written in bass clef with a 6/8 time signature. The G Minor Blues scale starts on G2 and the C Minor Blues scale starts on C2. Each scale is presented as a two-measure phrase with a repeat sign at the end.

F Minor Blues

Bb Minor Blues

Musical notation for F Minor Blues and Bb Minor Blues scales. The F Minor Blues scale is shown in the first system, and the Bb Minor Blues scale is shown in the second system. Both are written in bass clef with a 6/8 time signature. The F Minor Blues scale starts on F2 and the Bb Minor Blues scale starts on Bb2. Each scale is presented as a two-measure phrase with a repeat sign at the end.

Eb Minor Blues

Ab Minor Blues

Musical notation for Eb Minor Blues and Ab Minor Blues scales. The Eb Minor Blues scale is shown in the first system, and the Ab Minor Blues scale is shown in the second system. Both are written in bass clef with a 6/8 time signature. The Eb Minor Blues scale starts on Eb2 and the Ab Minor Blues scale starts on Ab2. Each scale is presented as a two-measure phrase with a repeat sign at the end.

C# Minor Blues

F# Minor Blues

Musical notation for C# Minor Blues and F# Minor Blues scales. The C# Minor Blues scale is shown in the first system, and the F# Minor Blues scale is shown in the second system. Both are written in bass clef with a 6/8 time signature. The C# Minor Blues scale starts on C#2 and the F# Minor Blues scale starts on F#2. Each scale is presented as a two-measure phrase with a repeat sign at the end.

B Minor Blues

E Minor Blues

Musical notation for B Minor Blues and E Minor Blues scales. The B Minor Blues scale is shown in the first system, and the E Minor Blues scale is shown in the second system. Both are written in bass clef with a 6/8 time signature. The B Minor Blues scale starts on B2 and the E Minor Blues scale starts on E2. Each scale is presented as a two-measure phrase with a repeat sign at the end.

Viola  
Blues Scales  
1 Octave

Viola  
Bluestonleitern  
1 Oktave

Alto  
Gammes Blues  
1 Octave

C Major Blues

F Major Blues



B♭ Major Blues

E♭ Major Blues



A♭ Major Blues

D♭ Major Blues



G♭ Major Blues

B Major Blues



E Major Blues

A Major Blues



D Major Blues

G Major Blues





Viola  
Chromatic Scales  
1 Octave

Viola  
Chromatischen Tonleitern  
1 Oktave

Alto  
Gammes Chromatiques  
1 Octave

C Chromatic



C# Chromatic



D Chromatic



E♭ Chromatic



E Chromatic



F Chromatic



F# Chromatic



G Chromatic



A♭ Chromatic



A Chromatic



B♭ Chromatic



B Chromatic



Viola  
Chromatic Scales  
2 Octaves

Viola  
Chromatischen Tonleitern  
2 Oktaven

Alto  
Gammes Chromatiques  
2 Octaves

C Chromatic

Two staves of musical notation for the C Chromatic scale. The first staff shows the ascending scale from C4 to C5. The second staff shows the descending scale from C5 to C4. The notes are: C, C#, C, D, D#, D, E, E#, E, F, F#, F, G, G#, G, A, A#, A, B, B#, B, C.

C# Chromatic

Two staves of musical notation for the C# Chromatic scale. The first staff shows the ascending scale from C#4 to C#5. The second staff shows the descending scale from C#5 to C#4. The notes are: C#, C, C#, D, D#, D, E, E#, E, F, F#, F, G, G#, G, A, A#, A, B, B#, B, C#.

D Chromatic

Two staves of musical notation for the D Chromatic scale. The first staff shows the ascending scale from D4 to D5. The second staff shows the descending scale from D5 to D4. The notes are: D, D#, D, E, E#, E, F, F#, F, G, G#, G, A, A#, A, B, B#, B, D.

E♭ Chromatic

Two staves of musical notation for the E♭ Chromatic scale. The first staff shows the ascending scale from E♭4 to E♭5. The second staff shows the descending scale from E♭5 to E♭4. The notes are: E♭, E, E♭, F, F#, F, G, G#, G, A, A#, A, B, B#, B, C, C#, C, D, D#, D, E♭.

Viola  
Chromatic Scales  
2 Octaves

Viola  
Chromatischen Tonleitern  
2 Oktaven

Alto  
Gammes Chromatiques  
2 Octaves

E Chromatic

Two staves of musical notation for the E Chromatic scale. The first staff shows the ascending scale from E4 to E6. The second staff shows the descending scale from E6 to E4. The notes are: E, F, F#, G, G#, A, Bb, B, C, C#, D, Eb, D, E.

F Chromatic

Two staves of musical notation for the F Chromatic scale. The first staff shows the ascending scale from F4 to F6. The second staff shows the descending scale from F6 to F4. The notes are: F, F#, G, G#, A, Bb, B, C, C#, D, Eb, D, E.

F# Chromatic

Two staves of musical notation for the F# Chromatic scale. The first staff shows the ascending scale from F#4 to F#6. The second staff shows the descending scale from F#6 to F#4. The notes are: F#, G, G#, A, Bb, B, C, C#, D, Eb, D, E.

G Chromatic

Two staves of musical notation for the G Chromatic scale. The first staff shows the ascending scale from G4 to G6. The second staff shows the descending scale from G6 to G4. The notes are: G, G#, A, Bb, B, C, C#, D, Eb, D, E.

Viola  
Chromatic Scales  
2 Octaves

Viola  
Chromatischen Tonleitern  
2 Oktaven

Alto  
Gammes Chromatiques  
2 Octaves

A $\flat$  Chromatic

Two staves of musical notation for the A-flat chromatic scale. The first staff shows the ascending scale from A-flat to A-flat two octaves higher. The second staff shows the descending scale from A-flat to A-flat two octaves lower. The notes are: A $\flat$ , B $\flat$ , B, C $\flat$ , C, C $\sharp$ , D $\flat$ , D, D $\sharp$ , E $\flat$ , E, E $\sharp$ , F $\flat$ , F, F $\sharp$ , G $\flat$ , G, G $\sharp$ , A $\flat$ .

A Chromatic

Two staves of musical notation for the A chromatic scale. The first staff shows the ascending scale from A to A two octaves higher. The second staff shows the descending scale from A to A two octaves lower. The notes are: A, B $\flat$ , B, C $\flat$ , C, C $\sharp$ , D $\flat$ , D, D $\sharp$ , E $\flat$ , E, E $\sharp$ , F $\flat$ , F, F $\sharp$ , G $\flat$ , G, G $\sharp$ , A.

B $\flat$  Chromatic

Two staves of musical notation for the B-flat chromatic scale. The first staff shows the ascending scale from B-flat to B-flat two octaves higher. The second staff shows the descending scale from B-flat to B-flat two octaves lower. The notes are: B $\flat$ , C $\flat$ , C, C $\sharp$ , D $\flat$ , D, D $\sharp$ , E $\flat$ , E, E $\sharp$ , F $\flat$ , F, F $\sharp$ , G $\flat$ , G, G $\sharp$ , A $\flat$ , B $\flat$ .

B Chromatic

Two staves of musical notation for the B chromatic scale. The first staff shows the ascending scale from B to B two octaves higher. The second staff shows the descending scale from B to B two octaves lower. The notes are: B, C $\flat$ , C, C $\sharp$ , D $\flat$ , D, D $\sharp$ , E $\flat$ , E, E $\sharp$ , F $\flat$ , F, F $\sharp$ , G $\flat$ , G, G $\sharp$ , A $\flat$ , B.

Viola  
Dorian Scales  
1 Octave

Viola  
Dorischen Tonleitern  
1 Oktave

Alto  
Gammes Doriennes  
1 Octave

D Dorian



G Dorian



C Dorian



F Dorian



B $\flat$  Dorian



E $\flat$  Dorian



A $\flat$  Dorian



C# Dorian



F# Dorian



B Dorian



E Dorian



A Dorian



Viola  
Harmonic Minor Scales  
1 Octave

Viola  
Harmonischen Moll-Tonleitern  
1 Oktave

Alto  
Gammes Mineures Harmoniques  
1 Octave

A Harmonic Minor



D Harmonic Minor



G Harmonic Minor



C Harmonic Minor



F Harmonic Minor



Bb Harmonic Minor



Eb Harmonic Minor



Ab Harmonic Minor



C# Harmonic Minor



F# Harmonic Minor



B Harmonic Minor



E Harmonic Minor



Viola  
Thirds  
1 Octave

Viola  
Drittel  
1 Oktave

Alto  
Troisièmes  
1 Octave

A Harmonic Minor



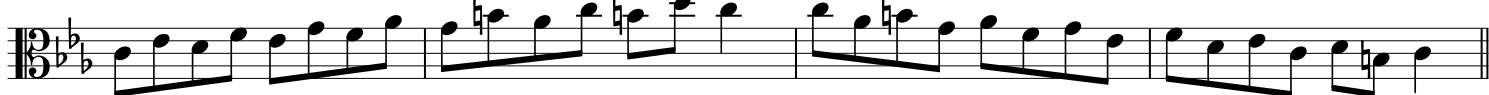
D Harmonic Minor



G Harmonic Minor



C Harmonic Minor



F Harmonic Minor



Bb Harmonic Minor



Eb Harmonic Minor



Ab Harmonic Minor



C# Harmonic Minor



F# Harmonic Minor



B Harmonic Minor



E Harmonic Minor



Viola  
Fourths  
1 Octave

Viola  
Viertel  
1 Oktave

Alto  
Quatrièmes  
1 Octave

A Harmonic Minor



D Harmonic Minor



G Harmonic Minor



C Harmonic Minor



F Harmonic Minor



Bb Harmonic Minor



Eb Harmonic Minor



Ab Harmonic Minor



C# Harmonic Minor



F# Harmonic Minor



B Harmonic Minor



E Harmonic Minor





Viola  
Fifths  
1 Octave

Viola  
Fünftel  
1 Oktave

Alto  
Cinquièmes  
1 Octave

A Harmonic Minor



D Harmonic Minor



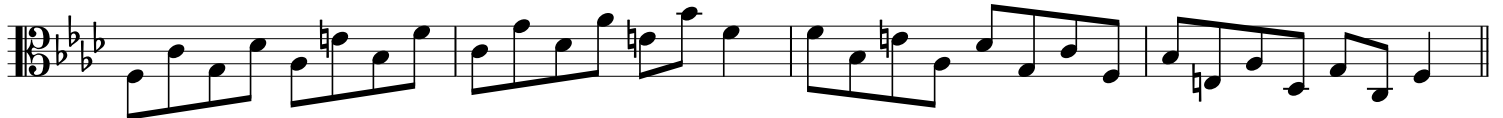
G Harmonic Minor



C Harmonic Minor



F Harmonic Minor



Bb Harmonic Minor



Viola  
Fifths  
1 Octave

Viola  
Fünftel  
1 Oktave

Alto  
Cinquièmes  
1 Octave

E $\flat$  Harmonic Minor



A $\flat$  Harmonic Minor



C# Harmonic Minor



F# Harmonic Minor



B Harmonic Minor



E Harmonic Minor

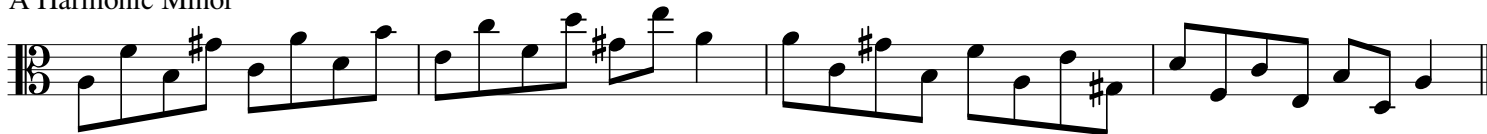


Viola  
Sixths  
1 Octave

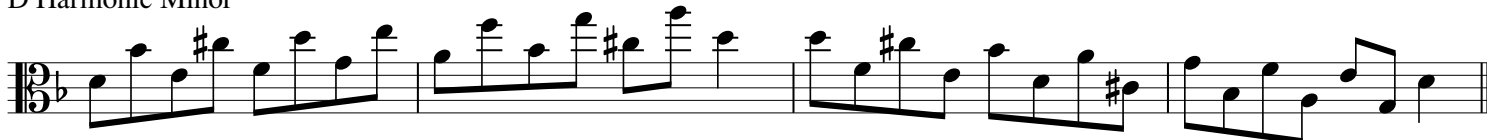
Viola  
Sechstel  
1 Oktave

Alto  
Sixièmes  
1 Octave

A Harmonic Minor



D Harmonic Minor



G Harmonic Minor



C Harmonic Minor



F Harmonic Minor



B $\flat$  Harmonic Minor



Viola  
Sixths  
1 Octave

Viola  
Sechstel  
1 Oktave

Alto  
Sixièmes  
1 Octave

E $\flat$  Harmonic Minor



A $\flat$  Harmonic Minor



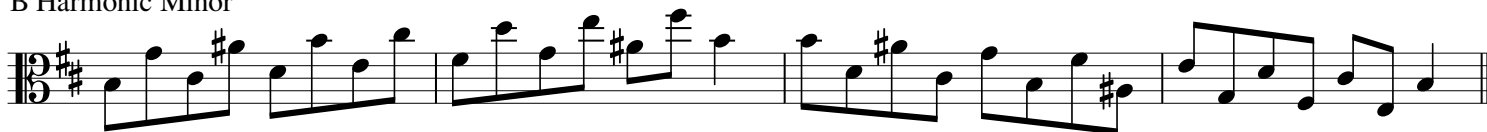
C# Harmonic Minor



F# Harmonic Minor



B Harmonic Minor



E Harmonic Minor

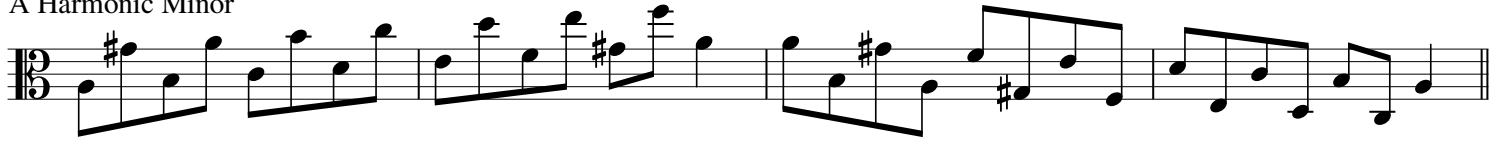


Viola  
Sevenths  
1 Octave

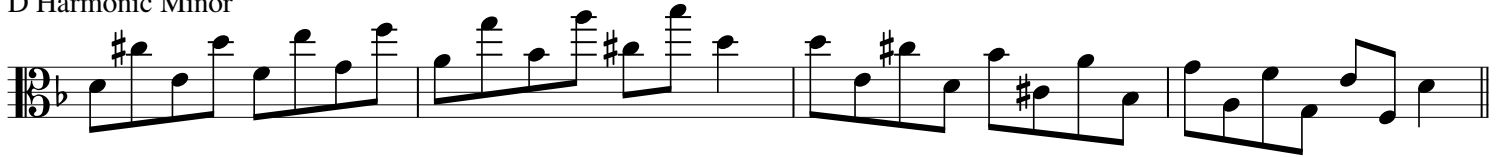
Viola  
Septimen  
1 Oktave

Alto  
Septièmes  
1 Octave

A Harmonic Minor



D Harmonic Minor



G Harmonic Minor



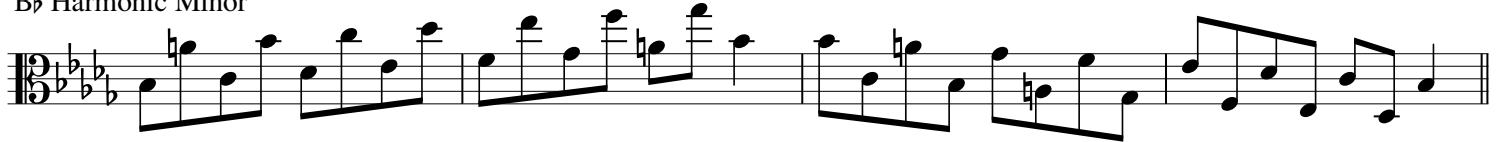
C Harmonic Minor



F Harmonic Minor



B $\flat$  Harmonic Minor



Viola  
Sevenths  
1 Octave

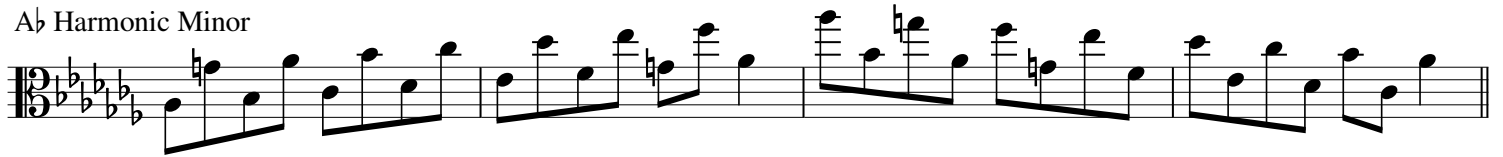
Viola  
Septimen  
1 Oktave

Alto  
Septièmes  
1 Octave

E♭ Harmonic Minor



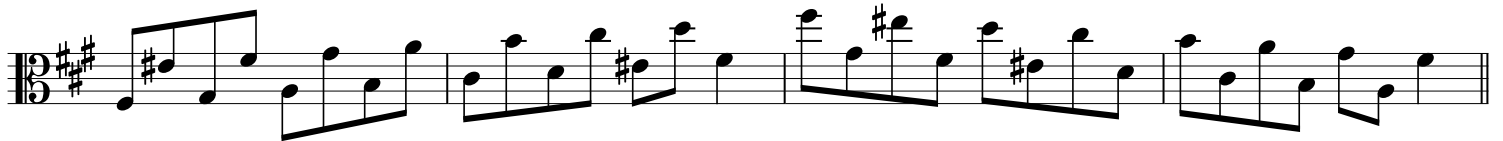
A♭ Harmonic Minor



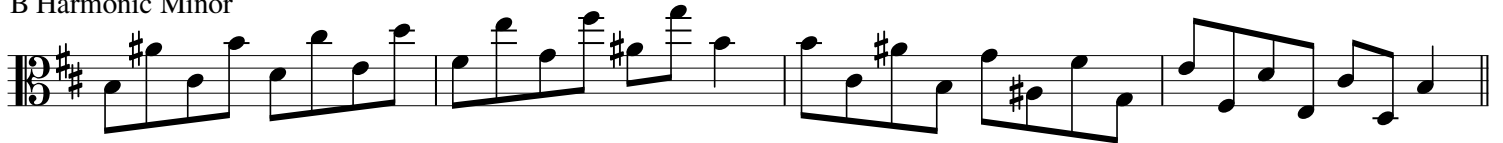
C# Harmonic Minor



F# Harmonic Minor



B Harmonic Minor



E Harmonic Minor



Viola  
Harmonic Minor Scales  
2 Octaves

Viola  
Harmonischen Moll-Tonleitern  
2 Oktaven

Alto  
Gammes Mineures Harmoniques  
2 Octaves

A Harmonic Minor

D Harmonic Minor

G Harmonic Minor

C Harmonic Minor

F Harmonic Minor

Bb Harmonic Minor

Eb Harmonic Minor

Ab Harmonic Minor

C# Harmonic Minor

F# Harmonic Minor

B Harmonic Minor

E Harmonic Minor

Viola  
Thirds  
2 Octaves

Viola  
Drittel  
2 Oktaven

Alto  
Troisièmes  
2 Octaves

A Harmonic Minor

Two staves of musical notation for the A Harmonic Minor scale. The first staff shows the ascending scale: A2, B2, C3, D3, E3, F#3, G3, A3. The second staff shows the descending scale: G3, F#3, E3, D3, C3, B2, A2.

D Harmonic Minor

Two staves of musical notation for the D Harmonic Minor scale. The first staff shows the ascending scale: D2, E2, F2, G2, A2, B2, C#2, D2. The second staff shows the descending scale: C#2, B2, A2, G2, F2, E2, D2.

G Harmonic Minor

Two staves of musical notation for the G Harmonic Minor scale. The first staff shows the ascending scale: G2, A2, B2, C3, D3, E3, F#3, G3. The second staff shows the descending scale: F#3, E3, D3, C3, B2, A2, G2.

C Harmonic Minor

Two staves of musical notation for the C Harmonic Minor scale. The first staff shows the ascending scale: C2, D2, E2, F2, G2, A2, Bb2, C2. The second staff shows the descending scale: Bb2, A2, G2, F2, E2, D2, C2. A first ending bracket labeled '8' spans the final two notes of the second staff.



Viola  
Thirds  
2 Octaves

Viola  
Drittel  
2 Oktaven

Alto  
Troisièmes  
2 Octaves

F Harmonic Minor

Two staves of musical notation for the F Harmonic Minor scale. The first staff shows the ascending scale (F, G, A, Bb, C, D, Eb, F) and the second staff shows the descending scale (F, Eb, D, C, Bb, A, G, F). The key signature has two flats (Bb and Eb) and the time signature is 3/8.

Bb Harmonic Minor

Two staves of musical notation for the Bb Harmonic Minor scale. The first staff shows the ascending scale (Bb, C, D, Eb, F, G, Ab, Bb) and the second staff shows the descending scale (Bb, Ab, G, F, Eb, D, C, Bb). The key signature has three flats (Bb, Eb, and Ab) and the time signature is 3/8.

Eb Harmonic Minor

Two staves of musical notation for the Eb Harmonic Minor scale. The first staff shows the ascending scale (Eb, F, G, Ab, Bb, C, Db, Eb) and the second staff shows the descending scale (Eb, Db, C, Bb, Ab, G, F, Eb). The key signature has four flats (Bb, Eb, Ab, and Db) and the time signature is 3/8.

Ab Harmonic Minor

Two staves of musical notation for the Ab Harmonic Minor scale. The first staff shows the ascending scale (Ab, Bb, C, Db, Eb, F, Gb, Ab) and the second staff shows the descending scale (Ab, Gb, F, Eb, Db, C, Bb, Ab). The key signature has five flats (Bb, Eb, Ab, Db, and Gb) and the time signature is 3/8.

Viola  
Thirds  
2 Octaves

Viola  
Drittel  
2 Oktaven

Alto  
Troisièmes  
2 Octaves

C# Harmonic Minor

Two staves of musical notation for the C# Harmonic Minor scale. The first staff shows the ascending scale: C#4, D4, E4, F#4, G4, A4, B4, C#5. The second staff shows the descending scale: C#5, B4, A4, G4, F#4, E4, D4, C#4.

F# Harmonic Minor

Two staves of musical notation for the F# Harmonic Minor scale. The first staff shows the ascending scale: F#4, G4, A4, B4, C#5, D5, E5, F#5. The second staff shows the descending scale: F#5, E5, D5, C#5, B4, A4, G4, F#4.

B Harmonic Minor

Two staves of musical notation for the B Harmonic Minor scale. The first staff shows the ascending scale: B4, C#5, D5, E5, F#5, G5, A5, B5. The second staff shows the descending scale: B5, A5, G5, F#5, E5, D5, C#5, B4.

E Harmonic Minor

Two staves of musical notation for the E Harmonic Minor scale. The first staff shows the ascending scale: E4, F#4, G4, A4, B4, C#5, D5, E5. The second staff shows the descending scale: E5, D5, C#5, B4, A4, G4, F#4, E4.

Viola  
Jazz Minor Scales  
1 Octave

Viola  
Jazz-Moll-Tonleitern  
1 Oktave

Alto  
Gammes Jazz Mineures  
1 Octave

A Jazz Minor



D Jazz Minor



G Jazz Minor



C Jazz Minor



F Jazz Minor



B♭ Jazz Minor



E♭ Jazz Minor



A♭ Jazz Minor



C# Jazz Minor



F# Jazz Minor



B Jazz Minor



E Jazz Minor



Viola  
Thirds  
1 Octave

Viola  
Drittel  
1 Oktave

Alto  
Troisièmes  
1 Octave

A Jazz Minor



D Jazz Minor



G Jazz Minor



C Jazz Minor



F Jazz Minor



B♭ Jazz Minor



E♭ Jazz Minor



A♭ Jazz Minor



C# Jazz Minor



F# Jazz Minor



B Jazz Minor



E Jazz Minor



Viola  
Fourths  
1 Octave

Viola  
Viertel  
1 Oktave

Alto  
Quatrièmes  
1 Octave

A Jazz Minor



D Jazz Minor



G Jazz Minor



C Jazz Minor



F Jazz Minor



Bb Jazz Minor



Eb Jazz Minor



Ab Jazz Minor



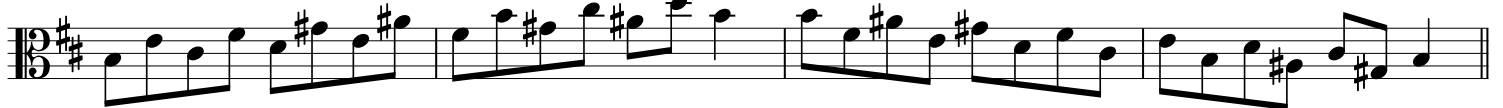
C# Jazz Minor



F# Jazz Minor



B Jazz Minor



E Jazz Minor



Viola  
Fifths  
1 Octave

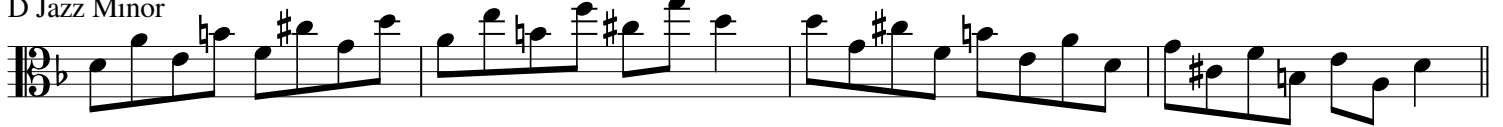
Viola  
Fünftel  
1 Oktave

Alto  
Cinquièmes  
1 Octave

A Jazz Minor



D Jazz Minor



G Jazz Minor



C Jazz Minor



F Jazz Minor



B♭ Jazz Minor



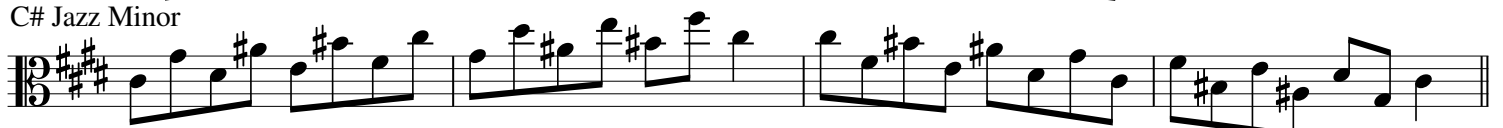
E♭ Jazz Minor



A♭ Jazz Minor



C# Jazz Minor



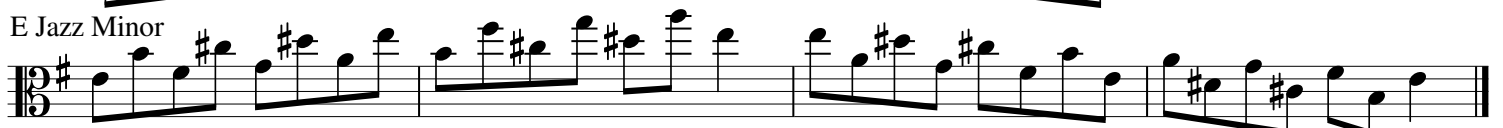
F# Jazz Minor



B Jazz Minor



E Jazz Minor

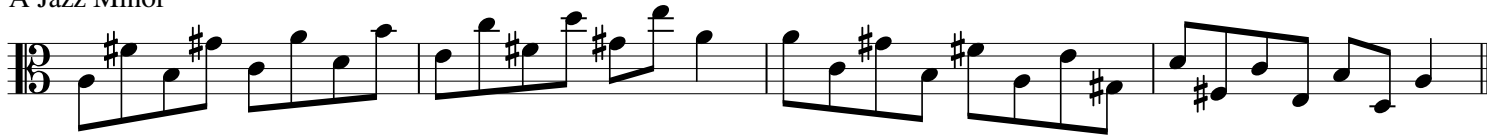


Viola  
Sixths  
1 Octave

Viola  
Sechstel  
1 Oktave

Alto  
Sixièmes  
1 Octave

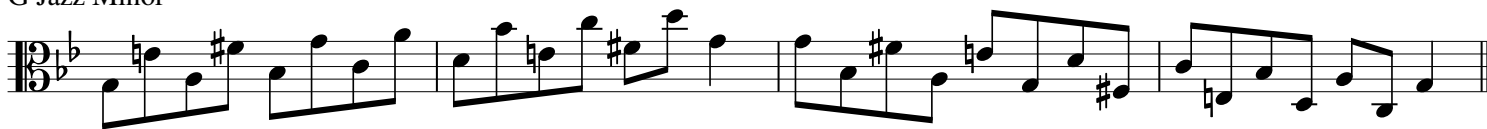
A Jazz Minor



D Jazz Minor



G Jazz Minor



C Jazz Minor



F Jazz Minor



B $\flat$  Jazz Minor



Viola  
Sixths  
1 Octave

Viola  
Sechstel  
1 Oktave

Alto  
Sixièmes  
1 Octave

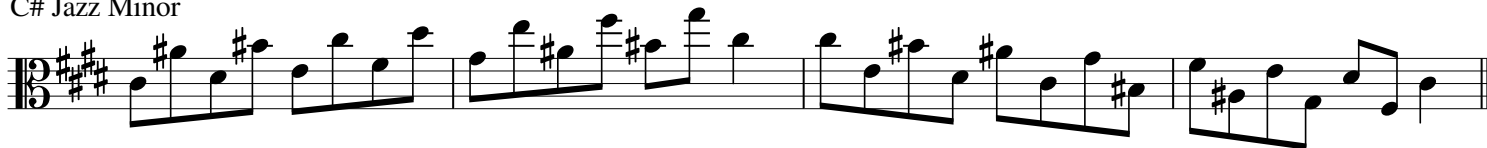
E♭ Jazz Minor



A♭ Jazz Minor



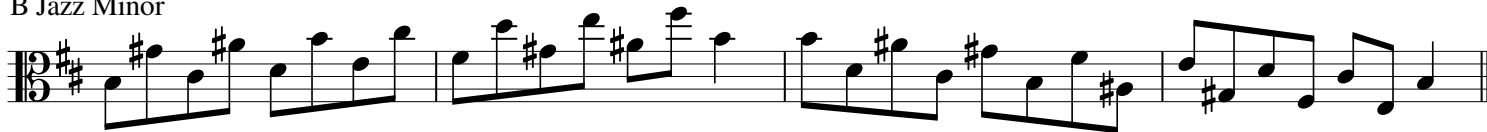
C# Jazz Minor



F# Jazz Minor



B Jazz Minor



E Jazz Minor



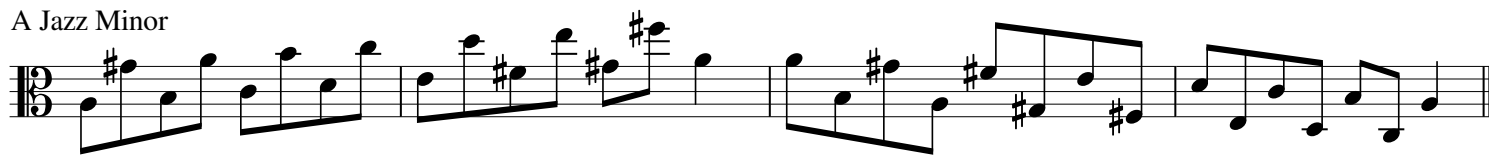


Viola  
Sevenths  
1 Octave

Viola  
Septimen  
1 Oktave

Alto  
Septièmes  
1 Octave

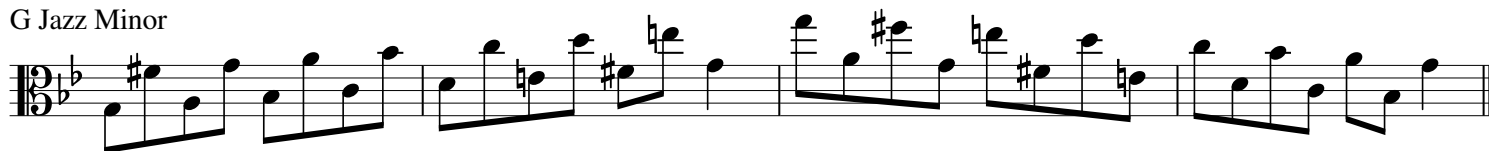
A Jazz Minor



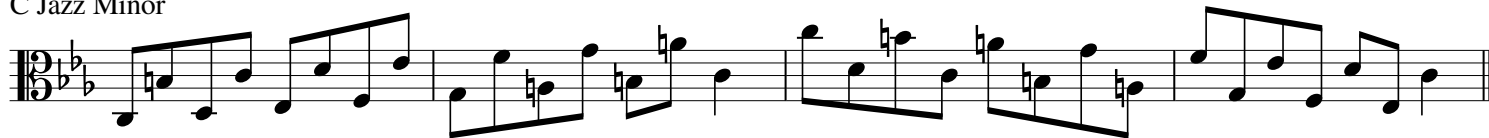
D Jazz Minor



G Jazz Minor



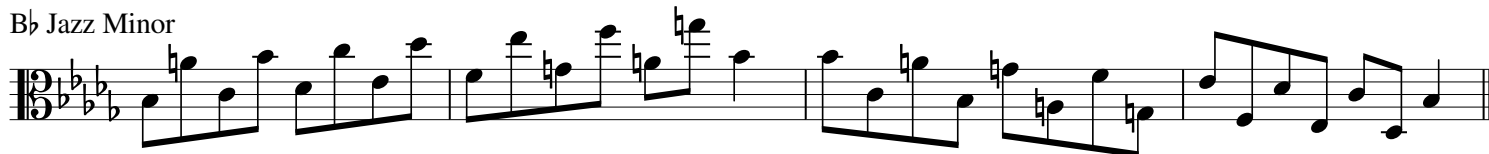
C Jazz Minor



F Jazz Minor



Bb Jazz Minor



Viola  
Sevenths  
1 Octave

Viola  
Septimen  
1 Oktave

Alto  
Septièmes  
1 Octave

E♭ Jazz Minor



A♭ Jazz Minor



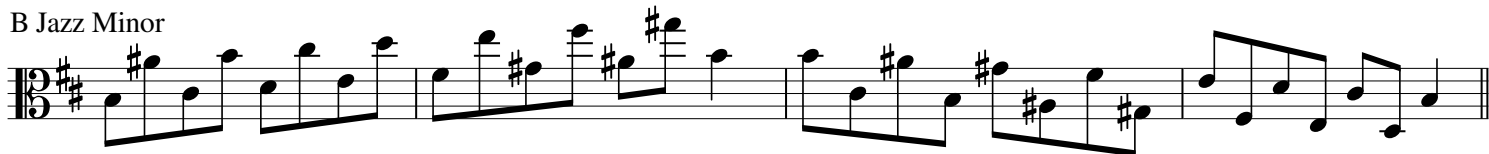
C# Jazz Minor



F# Jazz Minor



B Jazz Minor



E Jazz Minor



Viola  
Locrian Scales  
1 Octave

Viola  
Lokrischen Tonleitern  
1 Oktave

Alto  
Gammes Locriennes  
1 Octave

B Locrian



E Locrian



A Locrian



D Locrian



G Locrian



C Locrian



F Locrian



A# Locrian



D# Locrian



G# Locrian



C# Locrian



F# Locrian



Viola  
Lydian Augmented Scales  
1 Octave

Viola  
Lydischen Übermäßige-Tonleitern  
1 Oktave

Alto  
Gammes Lydiennes Augmentés  
1 Octave

F Lydian Augmented



B♭ Lydian Augmented



E♭ Lydian Augmented



A♭ Lydian Augmented



D♭ Lydian Augmented



G♭ Lydian Augmented



C♭ Lydian Augmented



E Lydian Augmented



A Lydian Augmented



D Lydian Augmented



G Lydian Augmented



C Lydian Augmented

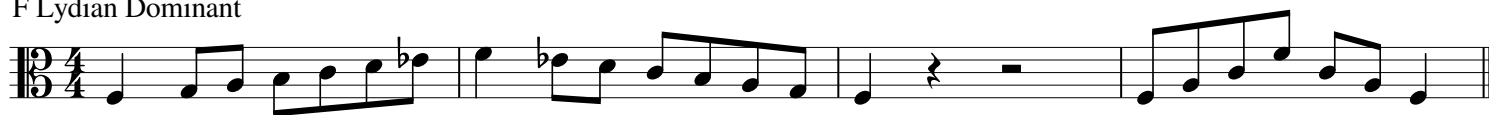


Viola  
Lydian Dominant Scales  
1 Octave

Viola  
Lydischen Dominant-Tonleitern  
1 Oktave

Alto  
Gammes Lydiennes Dominantes  
1 Octave

F Lydian Dominant



Bb Lydian Dominant



Eb Lydian Dominant



Ab Lydian Dominant



Db Lydian Dominant



Gb Lydian Dominant



Cb Lydian Dominant



E Lydian Dominant



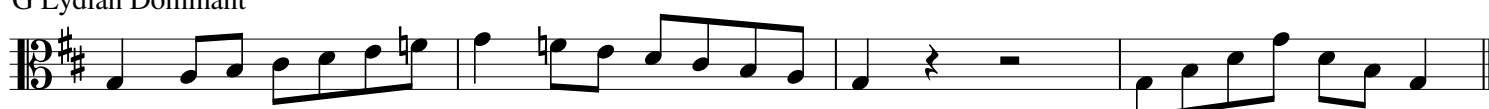
A Lydian Dominant



D Lydian Dominant



G Lydian Dominant



C Lydian Dominant



Viola  
Lydian Scales  
1 Octave

Viola  
Lydischen Tonleitern  
1 Oktave

Alto  
Gammes Lydiennes  
1 Octave

F Lydian



Bb Lydian



Eb Lydian



Ab Lydian



Db Lydian



Gb Lydian



Cb Lydian



E Lydian



A Lydian



D Lydian



G Lydian



C Lydian



Viola  
Major Scales  
1 Octave

Viola  
Dur-Tonleitern  
1 Oktave

Alto  
Gammes Majeures  
1 Octave

C Major



F Major



Bb Major



Eb Major



Ab Major



Db Major



Gb Major



B Major



E Major



A Major



D Major



G Major



Viola  
Thirds  
1 Octave

Viola  
Drittel  
1 Oktave

Alto  
Troisièmes  
1 Octave

C Major



F Major



Bb Major



Eb Major



Ab Major



Db Major



Gb Major



B Major



E Major



A Major



D Major



G Major





Viola  
Fourths  
1 Octave

Viola  
Viertel  
1 Oktave

Alto  
Quatrièmes  
1 Octave

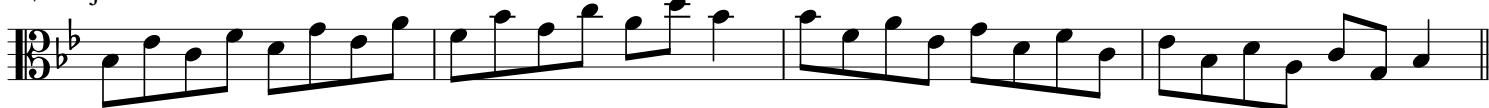
C Major



F Major



Bb Major



Eb Major



Ab Major



Db Major



Gb Major



B Major



E Major



A Major



D Major



G Major



Viola  
Fifths  
1 Octave

Viola  
Fünftel  
1 Oktave

Alto  
Cinquièmes  
1 Octave

C Major



F Major



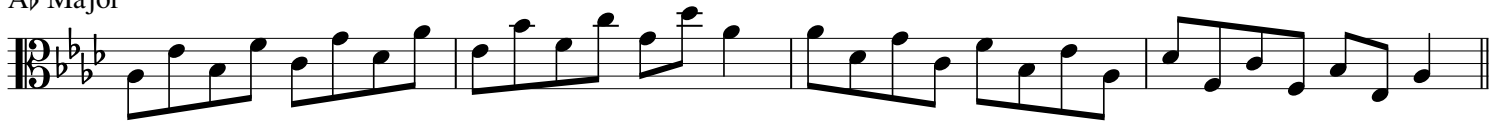
Bb Major



Eb Major



Ab Major



Db Major



Viola  
Fifths  
1 Octave

Viola  
Fünftel  
1 Oktave

Alto  
Cinquièmes  
1 Octave

G♭ Major



B Major



E Major



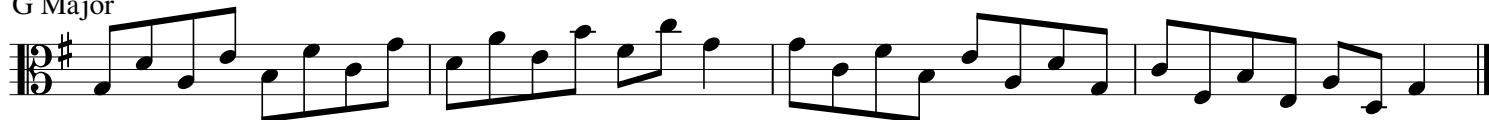
A Major



D Major



G Major

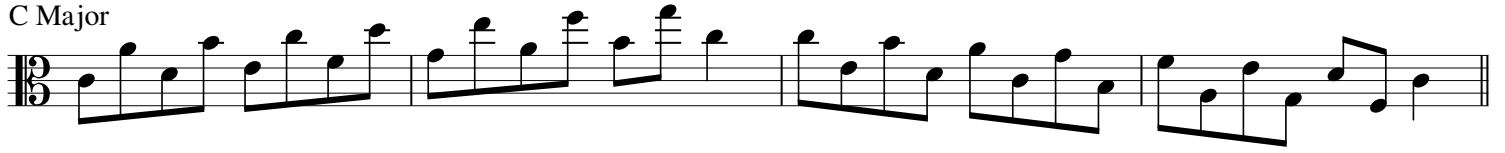


Viola  
Sixths  
1 Octave

Viola  
Sechstel  
1 Oktave

Alto  
Sixièmes  
1 Octave

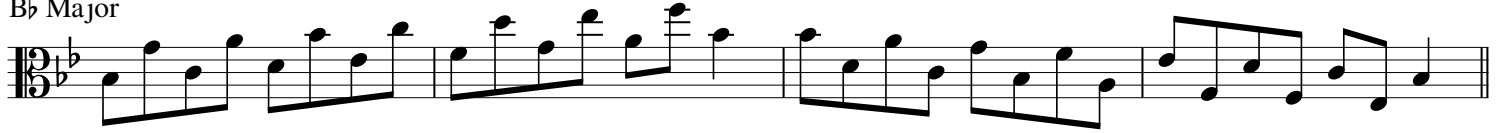
C Major



F Major



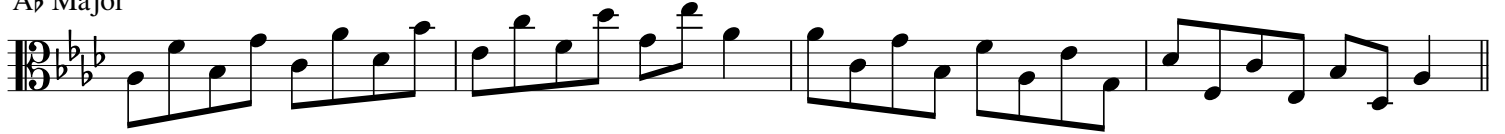
Bb Major



Eb Major



Ab Major



Db Major



Viola  
Sixths  
1 Octave

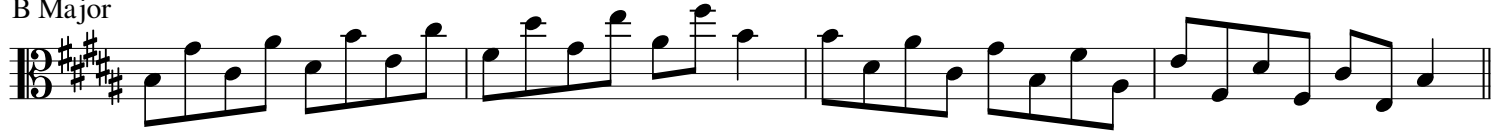
Viola  
Sechstel  
1 Oktave

Alto  
Sixièmes  
1 Octave

G♭ Major



B Major



E Major



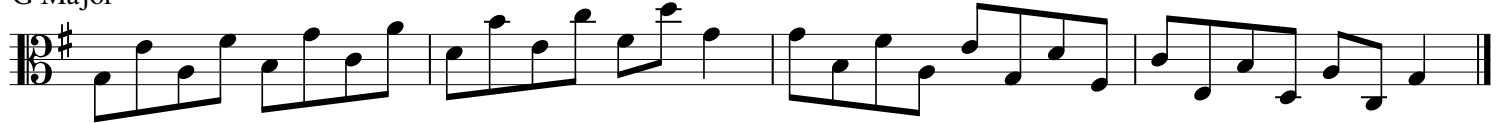
A Major



D Major



G Major



Viola  
Sevenths  
1 Octave

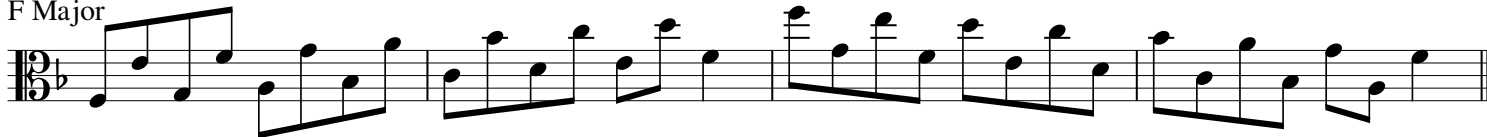
Viola  
Septimen  
1 Oktave

Alto  
Septièmes  
1 Octave

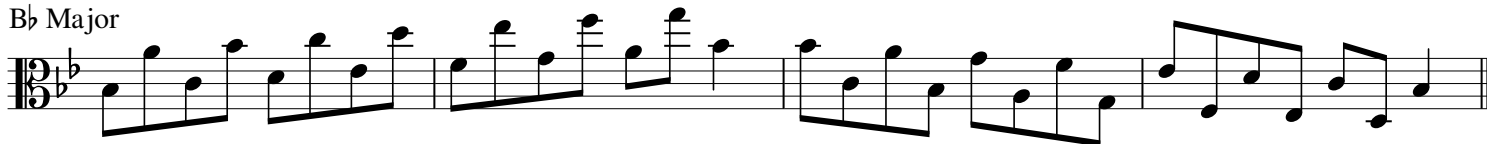
C Major



F Major



Bb Major



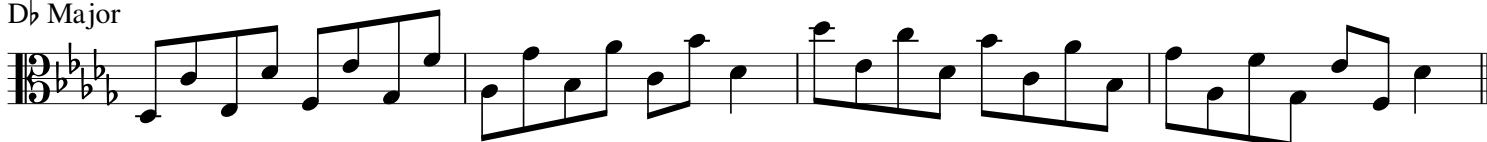
Eb Major



Ab Major



Db Major



Viola  
Sevenths  
1 Octave

Viola  
Septimen  
1 Oktave

Alto  
Septièmes  
1 Octave

G♭ Major

A musical staff in G-flat major (two flats) with a treble clef and a 6/8 time signature. It contains a sequence of notes for the first octave of a scale, starting on G-flat and ending on G-flat one octave higher.

B Major

A musical staff in B major (two sharps) with a treble clef and a 6/8 time signature. It contains a sequence of notes for the first octave of a scale, starting on B and ending on B one octave higher.

E Major

A musical staff in E major (three sharps) with a treble clef and a 6/8 time signature. It contains a sequence of notes for the first octave of a scale, starting on E and ending on E one octave higher.

A Major

A musical staff in A major (three sharps) with a treble clef and a 6/8 time signature. It contains a sequence of notes for the first octave of a scale, starting on A and ending on A one octave higher.

D Major

A musical staff in D major (two sharps) with a treble clef and a 6/8 time signature. It contains a sequence of notes for the first octave of a scale, starting on D and ending on D one octave higher.

G Major

A musical staff in G major (one sharp) with a treble clef and a 6/8 time signature. It contains a sequence of notes for the first octave of a scale, starting on G and ending on G one octave higher.

Viola  
Major Scales  
2 Octaves

Viola  
Dur-Tonleitern  
2 Oktaven

Alto  
Gammes Majeures  
2 Octaves

C Major



F Major



Bb Major



Eb Major



Ab Major



Db Major



Gb Major



B Major



E Major



A Major



D Major



G Major





Viola  
Thirds  
2 Octaves

Viola  
Drittel  
2 Oktaven

Alto  
Troisièmes  
2 Octaves

C Major

Two staves of musical notation for C Major. The first staff contains the first four measures of the piece. The second staff contains the next four measures, starting with an 8-measure rest indicated by a dashed line and the number '8' above the staff.

F Major

Two staves of musical notation for F Major. The first staff contains the first four measures. The second staff contains the next four measures.

B $\flat$  Major

Two staves of musical notation for B $\flat$  Major. The first staff contains the first four measures. The second staff contains the next four measures.

E $\flat$  Major

Two staves of musical notation for E $\flat$  Major. The first staff contains the first four measures. The second staff contains the next four measures.

Viola  
Thirds  
2 Octaves

Viola  
Drittel  
2 Oktaven

Alto  
Troisièmes  
2 Octaves

A $\flat$  Major

Two staves of musical notation for Viola Thirds in A $\flat$  Major. The first staff contains measures 1-2, and the second staff contains measures 3-4. The music consists of eighth-note patterns in a 3/8 time signature.

D $\flat$  Major

Two staves of musical notation for Viola Thirds in D $\flat$  Major. The first staff contains measures 1-2, and the second staff contains measures 3-4. The music consists of eighth-note patterns in a 3/8 time signature.

G $\flat$  Major

Two staves of musical notation for Viola Thirds in G $\flat$  Major. The first staff contains measures 1-2, and the second staff contains measures 3-4. The music consists of eighth-note patterns in a 3/8 time signature.

B Major

Two staves of musical notation for Viola Thirds in B Major. The first staff contains measures 1-2, and the second staff contains measures 3-4. The music consists of eighth-note patterns in a 3/8 time signature.

Viola  
Thirds  
2 Octaves

Viola  
Drittel  
2 Oktaven

Alto  
Troisièmes  
2 Octaves

E Major

Two staves of musical notation for E Major. The first staff contains the first four measures of the piece, and the second staff contains the next four measures. The key signature has three sharps (F#, C#, G#) and the time signature is 3/8. The music consists of eighth and sixteenth notes.

A Major

Two staves of musical notation for A Major. The first staff contains the first four measures, and the second staff contains the next four measures. The key signature has three sharps (F#, C#, G#) and the time signature is 3/8. The music consists of eighth and sixteenth notes.

D Major

Two staves of musical notation for D Major. The first staff contains the first four measures, and the second staff contains the next four measures. The key signature has two sharps (F#, C#) and the time signature is 3/8. The music consists of eighth and sixteenth notes.

G Major

Two staves of musical notation for G Major. The first staff contains the first four measures, and the second staff contains the next four measures. The key signature has one sharp (F#) and the time signature is 3/8. The music consists of eighth and sixteenth notes.

Viola  
Melodic Minor Scales  
1 Octave

Viola  
Melodischen Moll-Tonleitern  
1 Oktave

Alto  
Gammes Mineures Mélodiques  
1 Octave

A Melodic Minor



D Melodic Minor



G Melodic Minor



C Melodic Minor



F Melodic Minor



Bb Melodic Minor



Eb Melodic Minor



Ab Melodic Minor



C# Melodic Minor



F# Melodic Minor



B Melodic Minor



E Melodic Minor



Viola  
Thirds  
1 Octave

Viola  
Drittel  
1 Oktave

Alto  
Troisièmes  
1 Octave

A Melodic Minor



D Melodic Minor



G Melodic Minor



C Melodic Minor



F Melodic Minor



B♭ Melodic Minor



E♭ Melodic Minor



A♭ Melodic Minor



C# Melodic Minor



F# Melodic Minor



B Melodic Minor



E Melodic Minor



Viola  
Fourths  
1 Octave

Viola  
Viertel  
1 Oktave

Alto  
Quatrièmes  
1 Octave

A Melodic Minor



D Melodic Minor



G Melodic Minor



C Melodic Minor



F Melodic Minor



B♭ Melodic Minor



E♭ Melodic Minor



A♭ Melodic Minor



C# Melodic Minor



F# Melodic Minor



B Melodic Minor



E Melodic Minor

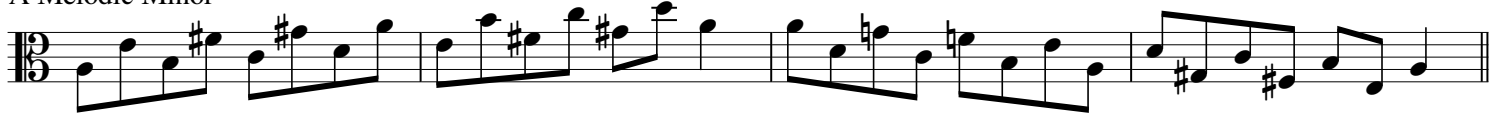


Viola  
Fifths  
1 Octave

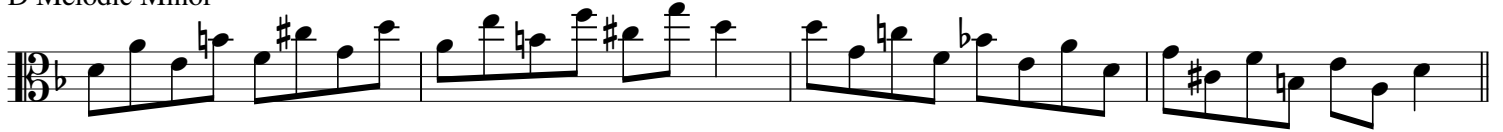
Viola  
Fünftel  
1 Oktave

Alto  
Cinquièmes  
1 Octave

A Melodic Minor



D Melodic Minor



G Melodic Minor



C Melodic Minor



F Melodic Minor



B $\flat$  Melodic Minor



Viola  
Fifths  
1 Octave

Viola  
Fünftel  
1 Oktave

Alto  
Cinquièmes  
1 Octave

E♭ Melodic Minor



A♭ Melodic Minor



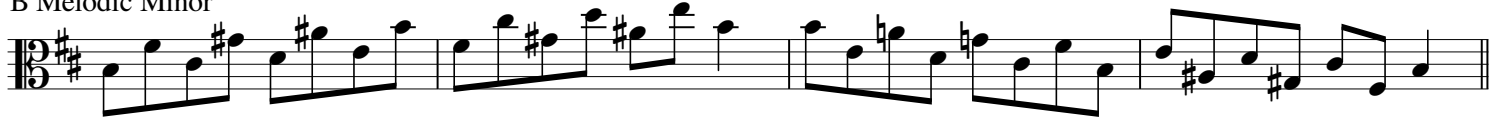
C# Melodic Minor



F# Melodic Minor



B Melodic Minor



E Melodic Minor



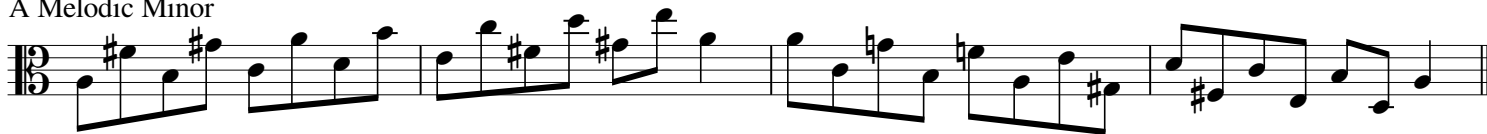


Viola  
Sixths  
1 Octave

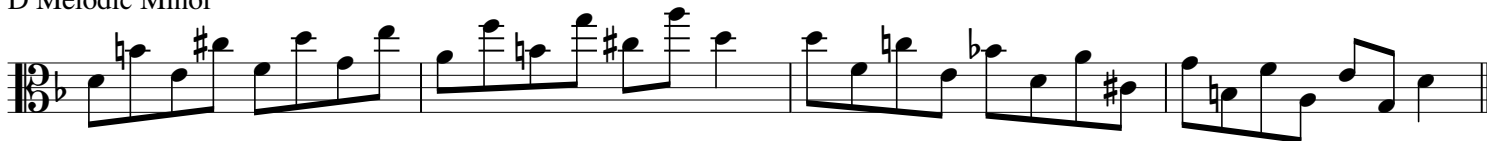
Viola  
Sechstel  
1 Oktave

Alto  
Sixièmes  
1 Octave

A Melodic Minor



D Melodic Minor



G Melodic Minor



C Melodic Minor



F Melodic Minor



B $\flat$  Melodic Minor

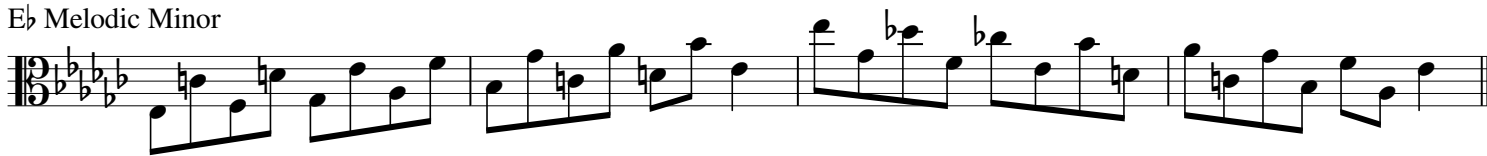


Viola  
Sixths  
1 Octave

Viola  
Sechstel  
1 Oktave

Alto  
Sixièmes  
1 Octave

E♭ Melodic Minor



A♭ Melodic Minor



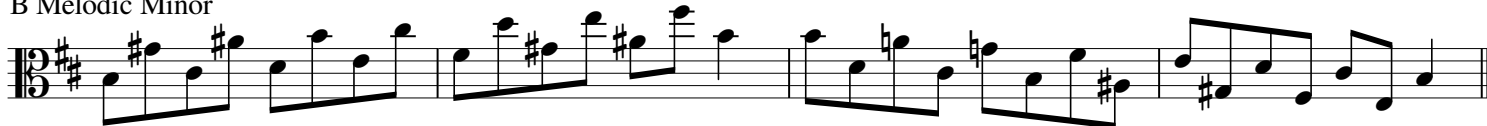
C# Melodic Minor



F# Melodic Minor



B Melodic Minor



E Melodic Minor

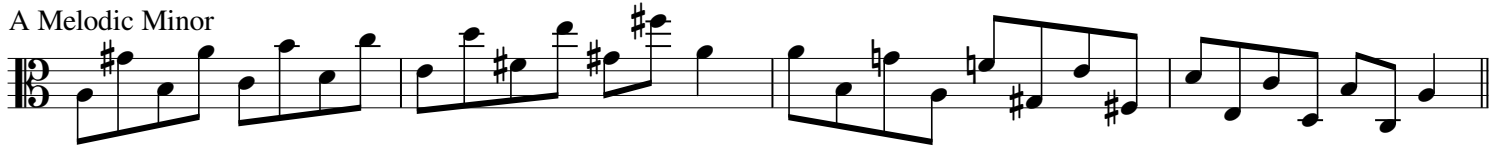


Viola  
Sevenths  
1 Octave

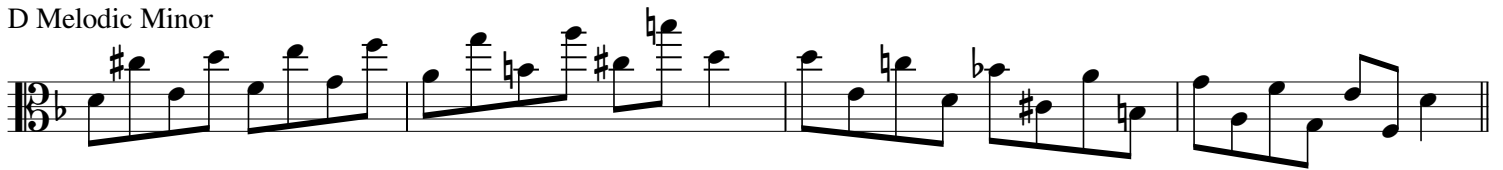
Viola  
Septimen  
1 Oktave

Alto  
Septièmes  
1 Octave

A Melodic Minor



D Melodic Minor



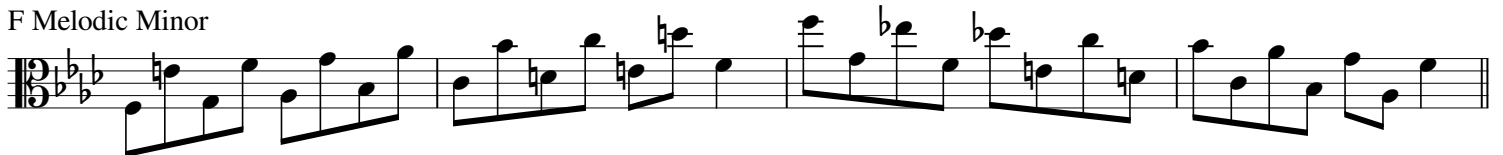
G Melodic Minor



C Melodic Minor



F Melodic Minor



Bb Melodic Minor



Viola  
Sevenths  
1 Octave

Viola  
Septimen  
1 Oktave

Alto  
Septièmes  
1 Octave

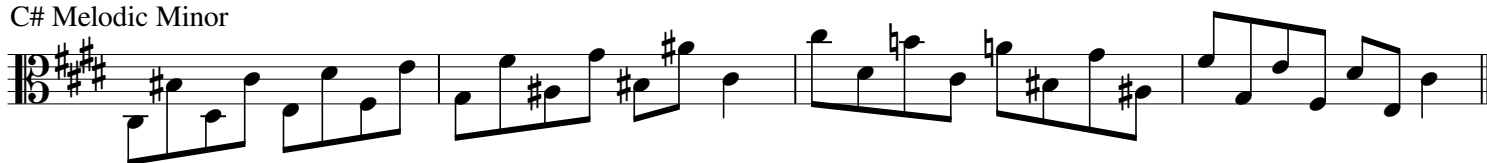
E♭ Melodic Minor



A♭ Melodic Minor



C# Melodic Minor



F# Melodic Minor



B Melodic Minor



E Melodic Minor



Viola  
Melodic Minor Scales  
2 Octaves

Viola  
Melodischen Moll-Tonleitern  
2 Oktaven

Alto  
Gammes Mineures Mélodiques  
2 Octaves

A Melodic Minor



D Melodic Minor




G Melodic Minor



C Melodic Minor



F Melodic Minor



B♭ Melodic Minor



E♭ Melodic Minor



A♭ Melodic Minor



C# Melodic Minor



F# Melodic Minor



B Melodic Minor



E Melodic Minor



Viola  
Thirds  
2 Octaves

Viola  
Drittel  
2 Oktaven

Alto  
Troisièmes  
2 Octaves

A Melodic Minor

Two staves of musical notation for the A Melodic Minor scale. The first staff shows the ascending scale: A2, B2, C3, D3, E3, F#3, G#3, A3. The second staff shows the descending scale: G#3, F#3, E3, D3, C3, B2, A2.

D Melodic Minor

Two staves of musical notation for the D Melodic Minor scale. The first staff shows the ascending scale: D2, E2, F2, G2, A2, B2, C#2, D3. The second staff shows the descending scale: C#2, B2, A2, G2, F2, E2, D2.

G Melodic Minor

Two staves of musical notation for the G Melodic Minor scale. The first staff shows the ascending scale: G2, A2, B2, C3, D3, E3, F#3, G3. The second staff shows the descending scale: F#3, E3, D3, C3, B2, A2, G2.

C Melodic Minor

Two staves of musical notation for the C Melodic Minor scale. The first staff shows the ascending scale: C2, D2, E2, F2, G2, A2, B2, C3. The second staff shows the descending scale: B2, A2, G2, F2, E2, D2, C2. A first ending bracket labeled '8' spans the final two notes of the descending scale.

Viola  
Thirds  
2 Octaves

Viola  
Drittel  
2 Oktaven

Alto  
Troisièmes  
2 Octaves

F Melodic Minor

Two staves of musical notation for the F Melodic Minor scale. The first staff shows the ascending scale (F, G, A, Bb, C, D, E, F), and the second staff shows the descending scale (F, E, D, C, Bb, A, G, F). The key signature has two flats (Bb, Eb) and the time signature is 3/8.

Bb Melodic Minor

Two staves of musical notation for the Bb Melodic Minor scale. The first staff shows the ascending scale (Bb, C, D, Eb, F, G, Ab, Bb), and the second staff shows the descending scale (Bb, Ab, G, F, Eb, D, C, Bb). The key signature has three flats (Bb, Eb, Ab) and the time signature is 3/8.

Eb Melodic Minor

Two staves of musical notation for the Eb Melodic Minor scale. The first staff shows the ascending scale (Eb, F, G, Ab, Bb, C, D, Eb), and the second staff shows the descending scale (Eb, D, C, Bb, Ab, G, F, Eb). The key signature has three flats (Bb, Eb, Ab) and the time signature is 3/8.

Ab Melodic Minor

Two staves of musical notation for the Ab Melodic Minor scale. The first staff shows the ascending scale (Ab, Bb, C, Db, Eb, F, G, Ab), and the second staff shows the descending scale (Ab, G, F, Eb, Db, C, Bb, Ab). The key signature has four flats (Bb, Eb, Ab, Db) and the time signature is 3/8.

Viola  
Thirds  
2 Octaves

Viola  
Drittel  
2 Oktaven

Alto  
Troisièmes  
2 Octaves

C# Melodic Minor

Two staves of musical notation for C# Melodic Minor. The first staff shows the ascending scale: C#4, D4, E4, F#4, G4, A4, B4, C#5. The second staff shows the descending scale: C#5, B4, A4, G4, F#4, E4, D4, C#4.

F# Melodic Minor

Two staves of musical notation for F# Melodic Minor. The first staff shows the ascending scale: F#4, G4, A4, B4, C#5, D5, E5, F#5. The second staff shows the descending scale: F#5, E5, D5, C#5, B4, A4, G4, F#4.

B Melodic Minor

Two staves of musical notation for B Melodic Minor. The first staff shows the ascending scale: B3, C4, D4, E4, F#4, G4, A4, B4. The second staff shows the descending scale: B4, A4, G4, F#4, E4, D4, C4, B3.

E Melodic Minor

Two staves of musical notation for E Melodic Minor. The first staff shows the ascending scale: E4, F4, G4, A4, B4, C#5, D5, E5. The second staff shows the descending scale: E5, D5, C#5, B4, A4, G4, F4, E4.



Viola  
Mixolydian Scales  
1 Octave

Viola  
Mixolydischen Tonleitern  
1 Oktave

Alto  
Gammes Mixolydiennes  
1 Octave

G Mixolydian



C Mixolydian



F Mixolydian



Bb Mixolydian



Eb Mixolydian



Ab Mixolydian



Db Mixolydian



F# Mixolydian



B Mixolydian



E Mixolydian



A Mixolydian



D Mixolydian



Viola  
Modal Scales  
1 Octave

Viola  
Modalen Tonleitern  
1 Oktave

Alto  
Gammes Modales  
1 Octave

C Ionian



D Dorian



E Phrygian



F Lydian



G Mixolydian



A Aeolian



B Locrian



Viola  
Modal Scales  
1 Octave

Viola  
Modalen Tonleitern  
1 Oktave

Alto  
Gammes Modales  
1 Octave

F Ionian



G Dorian



A Phrygian



Bb Lydian



C Mixolydian



D Aeolian



E Locrian



Viola  
Modal Scales  
1 Octave

Viola  
Modalen Tonleitern  
1 Oktave

Alto  
Gammes Modales  
1 Octave

B $\flat$  Ionian



C Dorian



D Phrygian



E $\flat$  Lydian



F Mixolydian



G Aeolian



A Locrian



Viola  
Modal Scales  
1 Octave

Viola  
Modalen Tonleitern  
1 Oktave

Alto  
Gammes Modales  
1 Octave

E $\flat$  Ionian



F Dorian



G Phrygian



A $\flat$  Lydian



B $\flat$  Mixolydian



C Aeolian



D Locrian



Viola  
Modal Scales  
1 Octave

Viola  
Modalen Tonleitern  
1 Oktave

Alto  
Gammes Modales  
1 Octave

A $\flat$  Ionian



B $\flat$  Dorian



C Phrygian



D $\flat$  Lydian



E $\flat$  Mixolydian



F Aeolian



G Locrian



Viola  
Modal Scales  
1 Octave

Viola  
Modalen Tonleitern  
1 Oktave

Alto  
Gammes Modales  
1 Octave

D $\flat$  Ionian



E $\flat$  Dorian



F Phrygian



G $\flat$  Lydian



A $\flat$  Mixolydian



B $\flat$  Aeolian



C Locrian



Viola  
Modal Scales  
1 Octave

Viola  
Modalen Tonleitern  
1 Oktave

Alto  
Gammes Modales  
1 Octave

G♭ Ionian



A♭ Dorian



B♭ Phrygian



C♭ Lydian



D♭ Mixolydian



E♭ Aeolian



F Locrian





Viola  
Modal Scales  
1 Octave

Viola  
Modalen Tonleitern  
1 Oktave

Alto  
Gammes Modales  
1 Octave

B Ionian



C# Dorian



D# Phrygian



E Lydian



F# Mixolydian



G# Aeolian



A# Locrian



Viola  
Modal Scales  
1 Octave

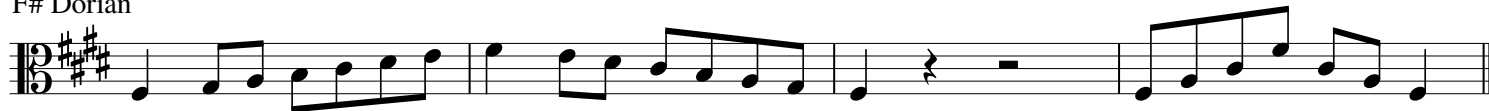
Viola  
Modalen Tonleitern  
1 Oktave

Alto  
Gammes Modales  
1 Octave

E Ionian



F# Dorian



G# Phrygian



A Lydian



B Mixolydian



C# Aeolian



D# Locrian



Viola  
Modal Scales  
1 Octave

Viola  
Modalen Tonleitern  
1 Oktave

Alto  
Gammes Modales  
1 Octave

A Ionian



B Dorian



C# Phrygian



D Lydian



E Mixolydian



F# Aeolian



G# Locrian



Viola  
Modal Scales  
1 Octave

Viola  
Modalen Tonleitern  
1 Oktave

Alto  
Gammes Modales  
1 Octave

D Ionian



E Dorian



F# Phrygian



G Lydian



A Mixolydian



B Aeolian



C# Locrian



Viola  
Modal Scales  
1 Octave

Viola  
Modalen Tonleitern  
1 Oktave

Alto  
Gammes Modales  
1 Octave

G Ionian



A Dorian



B Phrygian



C Lydian



D Mixolydian



E Aeolian



F# Locrian



Viola  
Dorian Scales  
1 Octave

Viola  
Dorischen Tonleitern  
1 Oktave

Alto  
Gammes Doriennes  
1 Octave

D Dorian



G Dorian



C Dorian



F Dorian



B♭ Dorian



E♭ Dorian



A♭ Dorian



C# Dorian



F# Dorian



B Dorian



E Dorian



A Dorian



Viola  
Phrygian Scales  
1 Octave

Viola  
Phrygischen Tonleitern  
1 Oktave

Alto  
Gammes Phrygiennes  
1 Octave

E Phrygian



A Phrygian



D Phrygian



G Phrygian



C Phrygian



F Phrygian



Bb Phrygian



D# Phrygian



G# Phrygian



C# Phrygian



F# Phrygian



B Phrygian



Viola  
Lydian Scales  
1 Octave

Viola  
Lydischen Tonleitern  
1 Oktave

Alto  
Gammes Lydiennes  
1 Octave

F Lydian



Bb Lydian



Eb Lydian



Ab Lydian



Db Lydian



Gb Lydian



Cb Lydian



E Lydian



A Lydian



D Lydian



G Lydian



C Lydian





Viola  
Mixolydian Scales  
1 Octave

Viola  
Mixolydischen Tonleitern  
1 Oktave

Alto  
Gammes Mixolydiennes  
1 Octave

G Mixolydian



C Mixolydian



F Mixolydian



Bb Mixolydian



Eb Mixolydian



Ab Mixolydian



Db Mixolydian



F# Mixolydian



B Mixolydian



E Mixolydian



A Mixolydian



D Mixolydian



Viola  
Locrian Scales  
1 Octave

Viola  
Lokrischen Tonleitern  
1 Oktave

Alto  
Gammes Locriennes  
1 Octave

B Locrian



E Locrian



A Locrian



D Locrian



G Locrian



C Locrian



F Locrian



A# Locrian



D# Locrian



G# Locrian



C# Locrian



F# Locrian



Viola  
Natural Minor Scales  
1 Octave

Viola  
Natürlichen Moll-Tonleitern  
1 Oktave

Alto  
Gammes Mineures Naturelles  
1 Octave

A Minor



D Minor



G Minor



C Minor



F Minor



Bb Minor



Eb Minor



Ab Minor



C# Minor



F# Minor



B Minor



E Minor



Viola  
Thirds  
1 Octave

Viola  
Drittel  
1 Oktave

Alto  
Troisièmes  
1 Octave

A Minor



D Minor



G Minor



C Minor



F Minor



Bb Minor



Eb Minor



Ab Minor



C# Minor



F# Minor



B Minor



E Minor



Viola  
Fourths  
1 Octave

Viola  
Viertel  
1 Oktave

Alto  
Quatrièmes  
1 Octave

A Minor



D Minor



G Minor



C Minor



F Minor



B $\flat$  Minor



E $\flat$  Minor



A $\flat$  Minor



C# Minor



F# Minor



B Minor



E Minor



Viola  
Fifths  
1 Octave

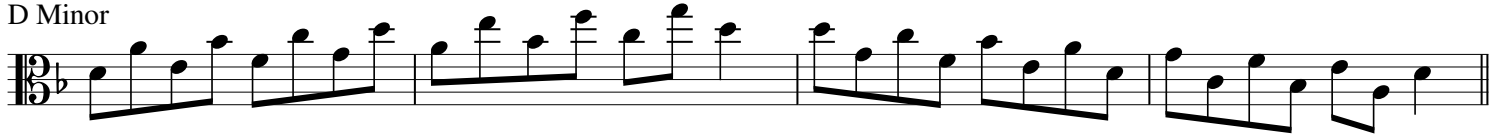
Viola  
Fünftel  
1 Oktave

Alto  
Cinquièmes  
1 Octave

A Minor



D Minor



G Minor



C Minor



F Minor



Bb Minor



Viola  
Fifths  
1 Octave

Viola  
Fünftel  
1 Oktave

Alto  
Cinquièmes  
1 Octave

E♭ Minor

Musical staff for E♭ Minor, Viola part. The staff is in bass clef with a 6/8 time signature. The key signature has three flats (B♭, E♭, A♭). The melody consists of eighth and sixteenth notes, starting on E♭ and moving through the scale.

A♭ Minor

Musical staff for A♭ Minor, Viola part. The staff is in bass clef with a 6/8 time signature. The key signature has four flats (B♭, E♭, A♭, D♭). The melody consists of eighth and sixteenth notes, starting on A♭ and moving through the scale.

C# Minor

Musical staff for C# Minor, Viola part. The staff is in bass clef with a 6/8 time signature. The key signature has three sharps (F#, C#, G#). The melody consists of eighth and sixteenth notes, starting on C# and moving through the scale.

F# Minor

Musical staff for F# Minor, Viola part. The staff is in bass clef with a 6/8 time signature. The key signature has two sharps (F#, C#). The melody consists of eighth and sixteenth notes, starting on F# and moving through the scale.

B Minor

Musical staff for B Minor, Viola part. The staff is in bass clef with a 6/8 time signature. The key signature has two sharps (F#, C#). The melody consists of eighth and sixteenth notes, starting on B and moving through the scale.

E Minor

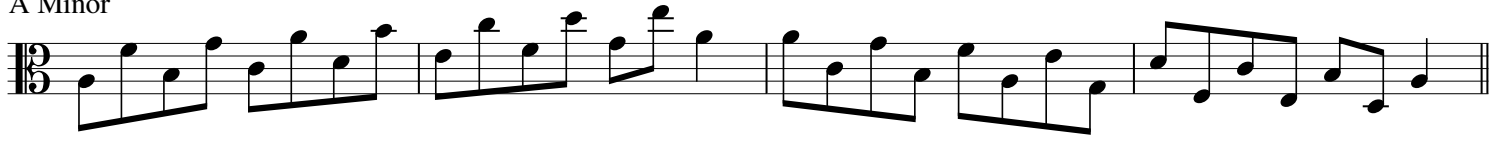
Musical staff for E Minor, Viola part. The staff is in bass clef with a 6/8 time signature. The key signature has one sharp (F#). The melody consists of eighth and sixteenth notes, starting on E and moving through the scale.

Viola  
Sixths  
1 Octave

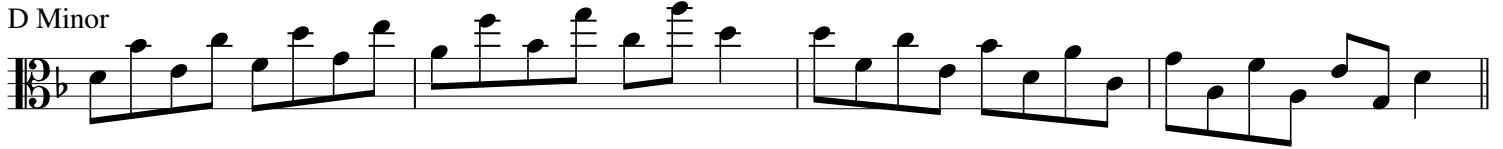
Viola  
Sechstel  
1 Oktave

Alto  
Sixièmes  
1 Octave

A Minor



D Minor



G Minor



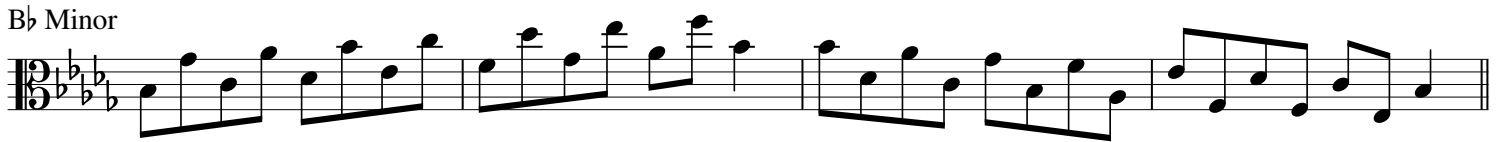
C Minor



F Minor



B-flat Minor





Viola  
Sixths  
1 Octave

Viola  
Sechstel  
1 Oktave

Alto  
Sixièmes  
1 Octave

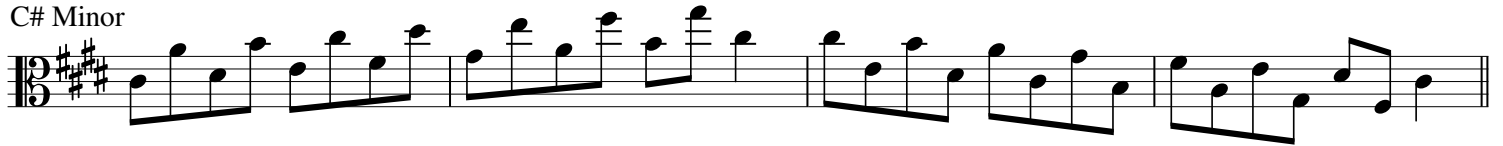
E♭ Minor



A♭ Minor



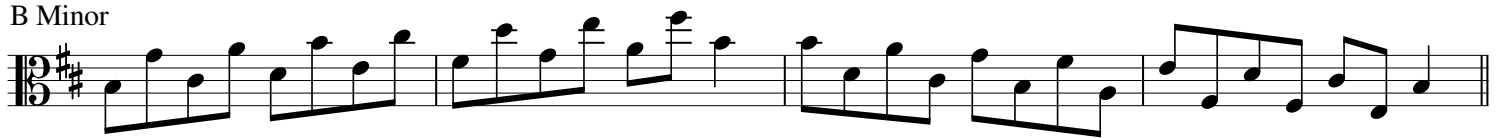
C# Minor



F# Minor



B Minor



E Minor

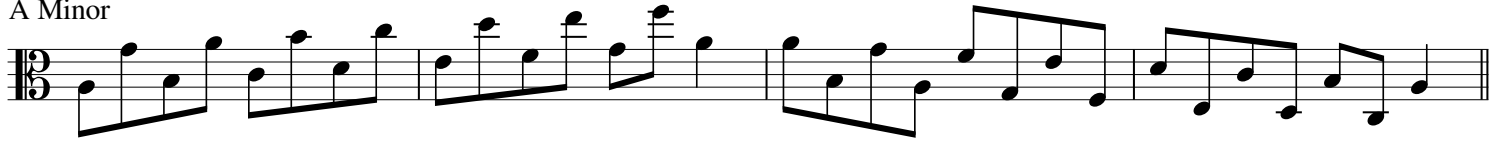


Viola  
Sevenths  
1 Octave

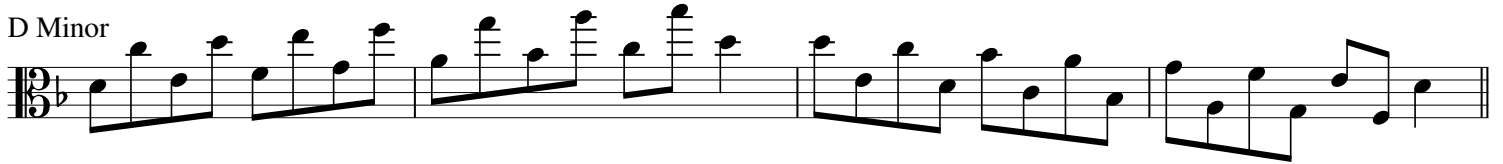
Viola  
Septimen  
1 Oktave

Alto  
Septièmes  
1 Octave

A Minor



D Minor



G Minor



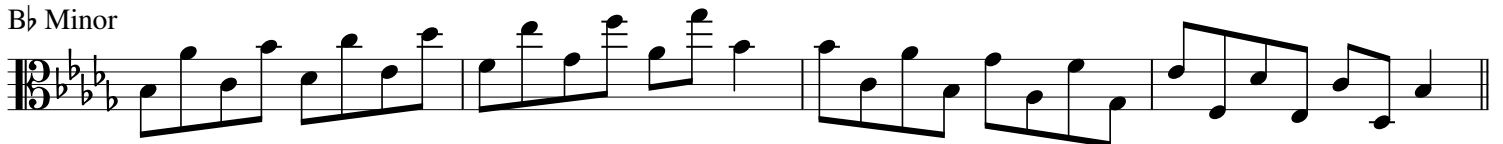
C Minor



F Minor



Bb Minor



Viola  
Sevenths  
1 Octave

Viola  
Septimen  
1 Oktave

Alto  
Septièmes  
1 Octave

E♭ Minor



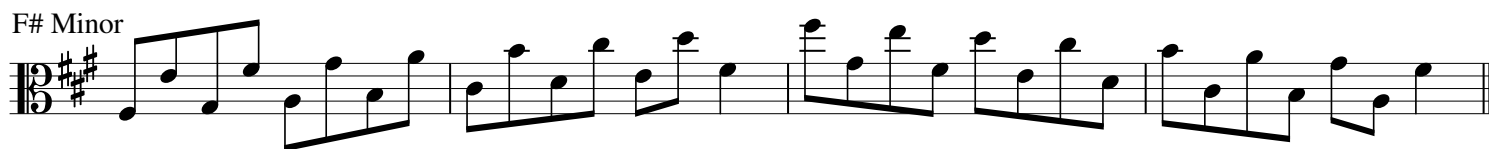
A♭ Minor



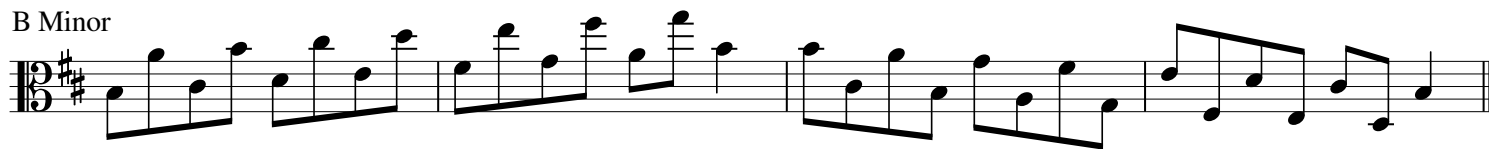
C# Minor



F# Minor



B Minor



E Minor



Viola  
Natural Minor Scales  
2 Octaves

Viola  
Natürlichen Moll-Tonleitern  
2 Oktaven

Alto  
Gammes Mineures Naturelles  
2 Octaves

A Minor



D Minor



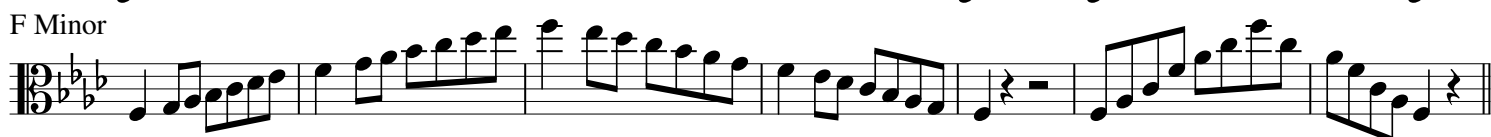
G Minor



C Minor



F Minor



B♭ Minor



E♭ Minor



A♭ Minor



C# Minor



F# Minor



B Minor



E Minor



Viola  
Thirds  
2 Octaves

Viola  
Drittel  
2 Oktaven

Alto  
Troisièmes  
2 Octaves

A Minor

Two staves of musical notation for the A Minor exercise. The first staff is in bass clef with a key signature of one flat (Bb) and a 3/8 time signature. It contains two lines of music. The second staff is in alto clef with a key signature of one flat and a 3/8 time signature, also containing two lines of music.

D Minor

Two staves of musical notation for the D Minor exercise. The first staff is in bass clef with a key signature of two flats (Bb, Eb) and a 3/8 time signature. It contains two lines of music. The second staff is in alto clef with a key signature of two flats and a 3/8 time signature, also containing two lines of music.

G Minor

Two staves of musical notation for the G Minor exercise. The first staff is in bass clef with a key signature of two flats (Bb, Eb) and a 3/8 time signature. It contains two lines of music. The second staff is in alto clef with a key signature of two flats and a 3/8 time signature, also containing two lines of music.

C Minor

Two staves of musical notation for the C Minor exercise. The first staff is in bass clef with a key signature of three flats (Bb, Eb, Ab) and a 3/8 time signature. It contains two lines of music. The second staff is in alto clef with a key signature of three flats and a 3/8 time signature, also containing two lines of music. A first ending bracket labeled '8' spans the final two measures of the second staff.

Viola  
Thirds  
2 Octaves

Viola  
Drittel  
2 Oktaven

Alto  
Troisièmes  
2 Octaves

F Minor

Two staves of musical notation for F Minor. The first staff contains the first four measures of the piece, and the second staff contains the next four measures. The key signature has two flats (Bb and Eb), and the time signature is 3/8. The music consists of eighth and sixteenth notes, with some beamed sixteenth notes.

Bb Minor

Two staves of musical notation for Bb Minor. The first staff contains the first four measures, and the second staff contains the next four measures. The key signature has three flats (Bb, Eb, and Ab), and the time signature is 3/8. The music consists of eighth and sixteenth notes, with some beamed sixteenth notes.

Eb Minor

Two staves of musical notation for Eb Minor. The first staff contains the first four measures, and the second staff contains the next four measures. The key signature has three flats (Bb, Eb, and Ab), and the time signature is 3/8. The music consists of eighth and sixteenth notes, with some beamed sixteenth notes.

Ab Minor

Two staves of musical notation for Ab Minor. The first staff contains the first four measures, and the second staff contains the next four measures. The key signature has four flats (Bb, Eb, Ab, and Db), and the time signature is 3/8. The music consists of eighth and sixteenth notes, with some beamed sixteenth notes.

Viola  
Thirds  
2 Octaves

Viola  
Drittel  
2 Oktaven

Alto  
Troisièmes  
2 Octaves

C# Minor

Two staves of musical notation in C# minor, 3/8 time. The first staff contains measures 1 through 4. The second staff contains measures 5 through 8, with a repeat sign at the end. A dashed line with the number '8' above it spans across both staves, indicating the total length of the exercise.

F# Minor

Two staves of musical notation in F# minor, 3/8 time. The first staff contains measures 1 through 4. The second staff contains measures 5 through 8, ending with a double bar line.

B Minor

Two staves of musical notation in B minor, 3/8 time. The first staff contains measures 1 through 4. The second staff contains measures 5 through 8, ending with a double bar line.

E Minor

Two staves of musical notation in E minor, 3/8 time. The first staff contains measures 1 through 4. The second staff contains measures 5 through 8, ending with a double bar line.

Viola  
Octatonic Scales  
1 Octave

Viola  
Oktatonischen Tonleitern  
1 Oktave

Alto  
Gammes Octatoniques  
1 Octave

C Octatonic (Half-Whole)

C Octatonic (Whole-Half)



C# Octatonic (Half-Whole)

C# Octatonic (Whole-Half)



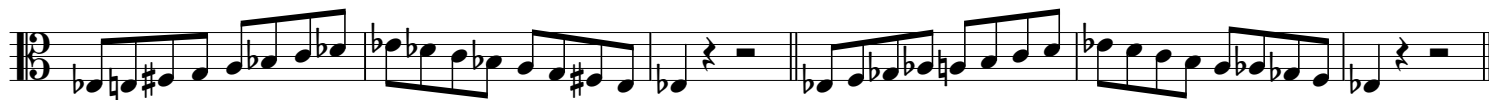
D Octatonic (Half-Whole)

D Octatonic (Whole-Half)



Eb Octatonic (Half-Whole)

Eb Octatonic (Whole-Half)



E Octatonic (Half-Whole)

E Octatonic (Whole-Half)



F Octatonic (Half-Whole)

F Octatonic (Whole-Half)





Viola  
Octatonic Scales  
1 Octave

Viola  
Oktatonischen Tonleitern  
1 Oktave

Alto  
Gammes Octatoniques  
1 Octave

F# Octatonic (Half-Whole)

F# Octatonic (Whole-Half)



G Octatonic (Half-Whole)

G Octatonic (Whole-Half)



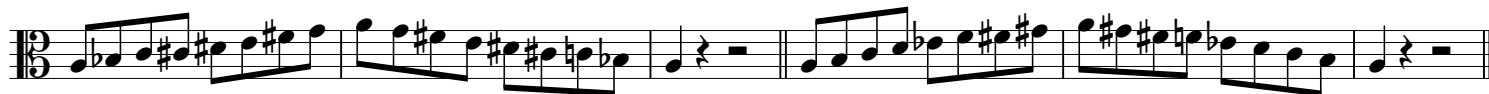
Ab Octatonic (Half-Whole)

Ab Octatonic (Whole-Half)



A Octatonic (Half-Whole)

A Octatonic (Whole-Half)



Bb Octatonic (Half-Whole)

Bb Octatonic (Whole-Half)



B Octatonic (Half-Whole)

B Octatonic (Whole-Half)



Viola  
Octatonic Scales  
2 Octaves

Viola  
Oktatonischen Tonleitern  
2 Oktaven

Alto  
Gammes Octatoniques  
2 Octaves

C Octatonic (Half-Whole)



C Octatonic (Whole-Half)



C# Octatonic (Half-Whole)



C# Octatonic (Whole-Half)



D Octatonic (Half-Whole)



D Octatonic (Whole-Half)



Eb Octatonic (Half-Whole)



Eb Octatonic (Whole-Half)



Viola  
Octatonic Scales  
2 Octaves

Viola  
Oktatonischen Tonleitern  
2 Oktaven

Alto  
Gammes Octatoniques  
2 Octaves

E Octatonic (Half-Whole)



E Octatonic (Whole-Half)



F Octatonic (Half-Whole)



F Octatonic (Whole-Half)



F# Octatonic (Half-Whole)



F# Octatonic (Whole-Half)



G Octatonic (Half-Whole)



G Octatonic (Whole-Half)



Viola  
Octatonic Scales  
2 Octaves

Viola  
Oktatonischen Tonleitern  
2 Oktaven

Alto  
Gammes Octatoniques  
2 Octaves

A $\flat$  Octatonic (Half-Whole)

Musical notation for the A $\flat$  Octatonic (Half-Whole) scale in bass clef, spanning two octaves. The scale is written as a sequence of eighth notes: A $\flat$ , B $\flat$ , C, D $\flat$ , E $\flat$ , F, G $\flat$ , A $\flat$ . The notation includes a treble clef, a key signature of two flats, and a common time signature.

A $\flat$  Octatonic (Whole-Half)

Musical notation for the A $\flat$  Octatonic (Whole-Half) scale in bass clef, spanning two octaves. The scale is written as a sequence of eighth notes: A $\flat$ , B $\flat$ , C, D $\flat$ , E $\flat$ , F, G $\flat$ , A $\flat$ . The notation includes a treble clef, a key signature of two flats, and a common time signature.

A Octatonic (Half-Whole)

Musical notation for the A Octatonic (Half-Whole) scale in bass clef, spanning two octaves. The scale is written as a sequence of eighth notes: A, B $\flat$ , C, D $\flat$ , E $\flat$ , F, G $\flat$ , A. The notation includes a treble clef, a key signature of two flats, and a common time signature.

A Octatonic (Whole-Half)

Musical notation for the A Octatonic (Whole-Half) scale in bass clef, spanning two octaves. The scale is written as a sequence of eighth notes: A, B $\flat$ , C, D $\flat$ , E $\flat$ , F, G $\flat$ , A. The notation includes a treble clef, a key signature of two flats, and a common time signature.

B $\flat$  Octatonic (Half-Whole)

Musical notation for the B $\flat$  Octatonic (Half-Whole) scale in bass clef, spanning two octaves. The scale is written as a sequence of eighth notes: B $\flat$ , C, D $\flat$ , E $\flat$ , F, G $\flat$ , A $\flat$ , B $\flat$ . The notation includes a treble clef, a key signature of two flats, and a common time signature.

B $\flat$  Octatonic (Whole-Half)

Musical notation for the B $\flat$  Octatonic (Whole-Half) scale in bass clef, spanning two octaves. The scale is written as a sequence of eighth notes: B $\flat$ , C, D $\flat$ , E $\flat$ , F, G $\flat$ , A $\flat$ , B $\flat$ . The notation includes a treble clef, a key signature of two flats, and a common time signature.

B Octatonic (Half-Whole)

Musical notation for the B Octatonic (Half-Whole) scale in bass clef, spanning two octaves. The scale is written as a sequence of eighth notes: B, C, D $\flat$ , E $\flat$ , F, G $\flat$ , A $\flat$ , B. The notation includes a treble clef, a key signature of two flats, and a common time signature.

B Octatonic (Whole-Half)

Musical notation for the B Octatonic (Whole-Half) scale in bass clef, spanning two octaves. The scale is written as a sequence of eighth notes: B, C, D $\flat$ , E $\flat$ , F, G $\flat$ , A $\flat$ , B. The notation includes a treble clef, a key signature of two flats, and a common time signature.

Viola  
Pentatonic Scales  
1 Octave

Viola  
Pentatonischen Tonleitern  
1 Oktave

Alto  
Gammes Pentatoniques  
1 Octave

C Major Pentatonic

F Major Pentatonic



Bb Major Pentatonic

Eb Major Pentatonic



Ab Major Pentatonic

Db Major Pentatonic



Gb Major Pentatonic

B Major Pentatonic



E Major Pentatonic

A Major Pentatonic



D Major Pentatonic

G Major Pentatonic



Viola  
Pentatonic Scales  
1 Octave

Viola  
Pentatonischen Tonleitern  
1 Oktave

Alto  
Gammes Pentatoniques  
1 Octave

A Minor Pentatonic

D Minor Pentatonic



G Minor Pentatonic

C Minor Pentatonic



F Minor Pentatonic

B $\flat$  Minor Pentatonic



E $\flat$  Minor Pentatonic

A $\flat$  Minor Pentatonic



C# Minor Pentatonic

F# Minor Pentatonic



B Minor Pentatonic

E Minor Pentatonic



Viola  
Pentatonic Scales  
2 Octaves

Viola  
Pentatonischen Tonleitern  
2 Oktaven

Alto  
Gammes Pentatoniques  
2 Octaves

C Major Pentatonic

F Major Pentatonic

Two musical staves in bass clef. The first staff shows the C Major Pentatonic scale (C4-G4) in two octaves, ascending and then descending. The second staff shows the F Major Pentatonic scale (F4-C5) in two octaves, ascending and then descending.

B♭ Major Pentatonic

E♭ Major Pentatonic

Two musical staves in bass clef. The first staff shows the B♭ Major Pentatonic scale (B♭4-F5) in two octaves, ascending and then descending. The second staff shows the E♭ Major Pentatonic scale (E♭4-B♭5) in two octaves, ascending and then descending.

A♭ Major Pentatonic

D♭ Major Pentatonic

Two musical staves in bass clef. The first staff shows the A♭ Major Pentatonic scale (A♭4-E♭5) in two octaves, ascending and then descending. The second staff shows the D♭ Major Pentatonic scale (D♭4-A♭5) in two octaves, ascending and then descending.

G♭ Major Pentatonic

B Major Pentatonic

Two musical staves in bass clef. The first staff shows the G♭ Major Pentatonic scale (G♭4-D♭5) in two octaves, ascending and then descending. The second staff shows the B Major Pentatonic scale (B4-F#5) in two octaves, ascending and then descending.

E Major Pentatonic

A Major Pentatonic

Two musical staves in bass clef. The first staff shows the E Major Pentatonic scale (E4-B5) in two octaves, ascending and then descending. The second staff shows the A Major Pentatonic scale (A4-F#5) in two octaves, ascending and then descending.

D Major Pentatonic

G Major Pentatonic

Two musical staves in bass clef. The first staff shows the D Major Pentatonic scale (D4-A5) in two octaves, ascending and then descending. The second staff shows the G Major Pentatonic scale (G4-F#5) in two octaves, ascending and then descending.

Viola  
Pentatonic Scales  
2 Octaves

Viola  
Pentatonischen Tonleitern  
2 Oktaven

Alto  
Gammes Pentatoniques  
2 Octaves

A Minor Pentatonic

D Minor Pentatonic

Musical notation for A Minor and D Minor Pentatonic scales. The A Minor scale is shown in two octaves, starting on A2 and ending on A4. The D Minor scale is also shown in two octaves, starting on D2 and ending on D4. Both scales are written in bass clef with a 6/8 time signature.

G Minor Pentatonic

C Minor Pentatonic

Musical notation for G Minor and C Minor Pentatonic scales. The G Minor scale is shown in two octaves, starting on G2 and ending on G4. The C Minor scale is also shown in two octaves, starting on C2 and ending on C4. Both scales are written in bass clef with a 6/8 time signature.

F Minor Pentatonic

Bb Minor Pentatonic

Musical notation for F Minor and Bb Minor Pentatonic scales. The F Minor scale is shown in two octaves, starting on F2 and ending on F4. The Bb Minor scale is also shown in two octaves, starting on Bb2 and ending on Bb4. Both scales are written in bass clef with a 6/8 time signature.

Eb Minor Pentatonic

Ab Minor Pentatonic

Musical notation for Eb Minor and Ab Minor Pentatonic scales. The Eb Minor scale is shown in two octaves, starting on Eb2 and ending on Eb4. The Ab Minor scale is also shown in two octaves, starting on Ab2 and ending on Ab4. Both scales are written in bass clef with a 6/8 time signature.

C# Minor Pentatonic

F# Minor Pentatonic

Musical notation for C# Minor and F# Minor Pentatonic scales. The C# Minor scale is shown in two octaves, starting on C#2 and ending on C#4. The F# Minor scale is also shown in two octaves, starting on F#2 and ending on F#4. Both scales are written in bass clef with a 6/8 time signature.

B Minor Pentatonic

E Minor Pentatonic

Musical notation for B Minor and E Minor Pentatonic scales. The B Minor scale is shown in two octaves, starting on B2 and ending on B4. The E Minor scale is also shown in two octaves, starting on E2 and ending on E4. Both scales are written in bass clef with a 6/8 time signature.



Viola  
Phrygian Scales  
1 Octave

Viola  
Phrygischen Tonleitern  
1 Oktave

Alto  
Gammes Phrygiennes  
1 Octave

E Phrygian



A Phrygian



D Phrygian



G Phrygian



C Phrygian



F Phrygian



Bb Phrygian



D# Phrygian



G# Phrygian



C# Phrygian



F# Phrygian



B Phrygian



Viola  
Whole Tone Scales  
1 Octave

Viola  
Ganztonleitern  
1 Oktave

Alto  
Gammes Par Tons  
1 Octave

C Whole Tone

C# Whole Tone

D Whole Tone

E♭ Whole Tone

E Whole Tone

F Whole Tone

G♭ Whole Tone

G Whole Tone

A♭ Whole Tone

A Whole Tone

B♭ Whole Tone

B Whole Tone

Viola  
Whole Tone Scales  
2 Octaves

Viola  
Ganztonleitern  
2 Oktaven

Alto  
Gammes Par Tons  
2 Octaves

C Whole Tone



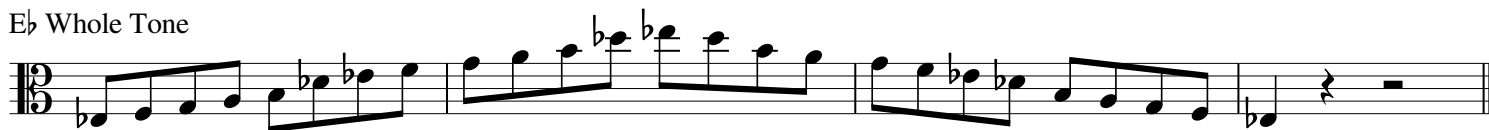
C# Whole Tone



D Whole Tone



Eb Whole Tone



E Whole Tone



F Whole Tone



Viola  
Whole Tone Scales  
2 Octaves

Viola  
Ganztonleitern  
2 Oktaven

Alto  
Gammes Par Tons  
2 Octaves

G $\flat$  Whole Tone

Musical notation for the G $\flat$  Whole Tone scale in Viola clef, spanning two octaves. The scale is written in a single line with a treble clef and a key signature of one flat. The notes are: G $\flat$ , A $\flat$ , B $\flat$ , C, D, E $\flat$ , F, G $\flat$ , A $\flat$ , B $\flat$ , C, D, E $\flat$ , F, G $\flat$ . The notation includes slurs and accidentals.

G Whole Tone

Musical notation for the G Whole Tone scale in Viola clef, spanning two octaves. The scale is written in a single line with a treble clef and a key signature of one sharp. The notes are: G, A, B, C, D, E, F $\sharp$ , G, A, B, C, D, E, F $\sharp$ , G. The notation includes slurs and accidentals.

A $\flat$  Whole Tone

Musical notation for the A $\flat$  Whole Tone scale in Viola clef, spanning two octaves. The scale is written in a single line with a treble clef and a key signature of two flats. The notes are: A $\flat$ , B $\flat$ , C, D, E $\flat$ , F, G $\flat$ , A $\flat$ , B $\flat$ , C, D, E $\flat$ , F, G $\flat$ , A $\flat$ . The notation includes slurs and accidentals.

A Whole Tone

Musical notation for the A Whole Tone scale in Viola clef, spanning two octaves. The scale is written in a single line with a treble clef and a key signature of two sharps. The notes are: A, B, C, D, E, F $\sharp$ , G $\sharp$ , A, B, C, D, E, F $\sharp$ , G $\sharp$ , A. The notation includes slurs and accidentals.

B $\flat$  Whole Tone

Musical notation for the B $\flat$  Whole Tone scale in Viola clef, spanning two octaves. The scale is written in a single line with a treble clef and a key signature of two flats. The notes are: B $\flat$ , C, D, E $\flat$ , F, G $\flat$ , A $\flat$ , B $\flat$ , C, D, E $\flat$ , F, G $\flat$ , A $\flat$ , B $\flat$ . The notation includes slurs and accidentals.

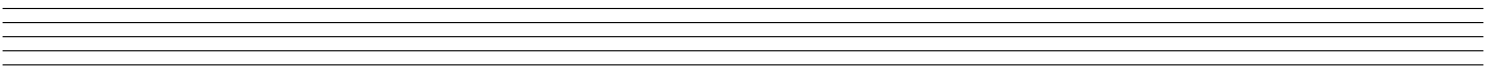
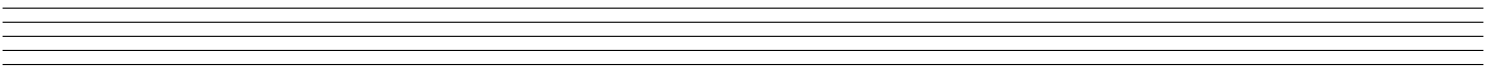
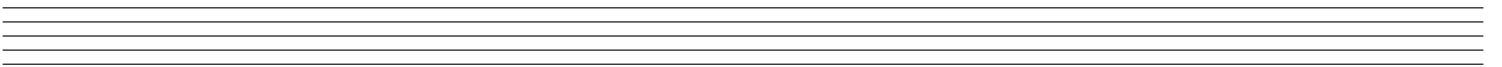
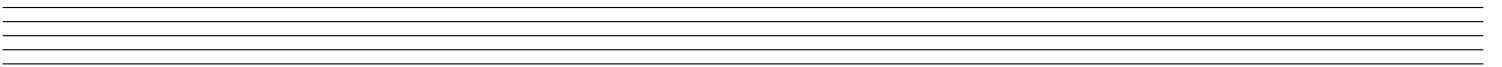
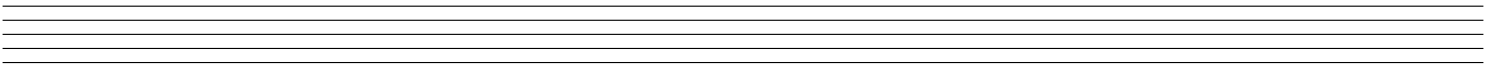
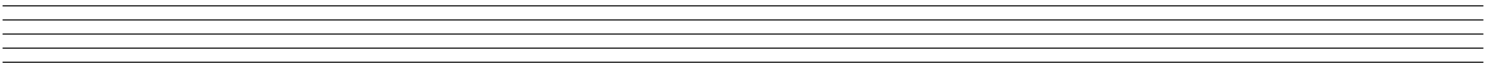
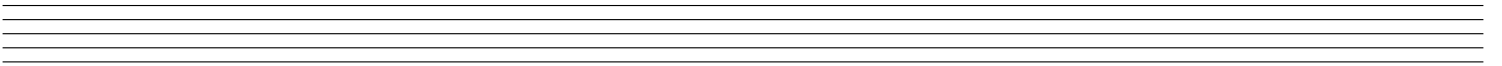
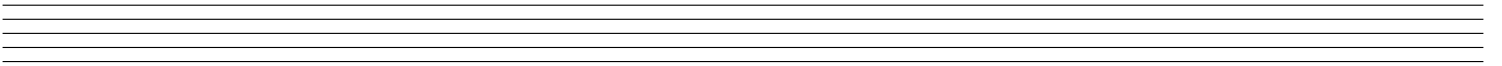
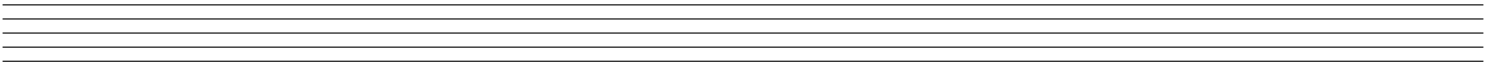
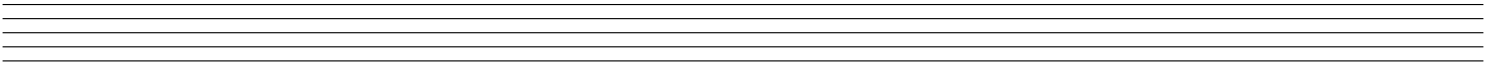
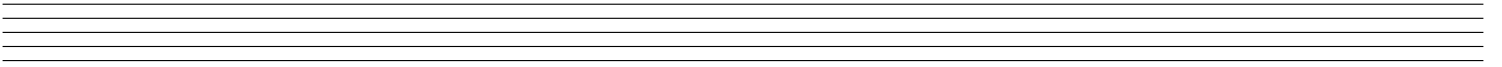
B Whole Tone

Musical notation for the B Whole Tone scale in Viola clef, spanning two octaves. The scale is written in a single line with a treble clef and a key signature of two sharps. The notes are: B, C, D, E, F $\sharp$ , G $\sharp$ , A, B, C, D, E, F $\sharp$ , G $\sharp$ , A. The notation includes slurs and accidentals.

# Practice Log

---

Altered Scales							
Arpeggios							
Bebop Scales							
Blues Scales							
Chromatic Scales							
Dorian Scales							
Harmonic Minor Scales							
Jazz Minor Scales							
Locrian Scales							
Lydian Augmented Scales							
Lydian Dominant Scales							
Lydian Scales							
Major Scales							
Melodic Minor Scales							
Mixolydian Scales							
Modal Scales							
Natural Minor Scales							
Octatonic Scales							
Pentatonic Scales							
Phrygian Scales							
Whole Tone Scales							
<b>Total Time</b>							



# UNIVERSAL PUBLIC DOMAIN DEDICATION

---

## **Scales & Arpeggios for Viola**

---

Altered Scales – 1 Octave  
Arpeggios – 1-2 Octaves  
Bebop Scales – 1 Octave  
Blues Scales – 1 Octave  
Chromatic Scales – 1-2 Octaves  
Dorian Scales – 1 Octave  
Harmonic Minor Scales – 1-2 Octaves  
Jazz Minor Scales – 1 Octave  
Locrian Scales – 1 Octave  
Lydian Augmented Scales – 1 Octave  
Lydian Dominant Scales – 1 Octave  
Lydian Scales – 1 Octave  
Major Scales – 1-2 Octaves  
Melodic Minor Scales – 1-2 Octaves  
Mixolydian Scales – 1 Octave  
Modal Scales – 1 Octave  
Natural Minor Scales – 1-2 Octaves  
Octatonic Scales – 1-2 Octaves  
Pentatonic Scales – 1-2 Octaves  
Phrygian Scales – 1 Octave  
Whole Tone Scales – 1-2 Octaves

---

This book contains charts of the most commonly practiced scales and arpeggios in Western music education programs.

[stringexcerpts.com](http://stringexcerpts.com)